

Project Review:

SC2000-13

Elm Creek Blvd Impr: reconstruction

Project Location:

MAP:

12

Maple Grove

Elm Creek Blvd between Hemlock & TH 169

Expansion of SW cell regional pond SC-P67 to create 10 foot pool

Inlet (s):

Site not accessible due to fence.

Outlet(s):

Site not accessible due to fence.

Basin(s):

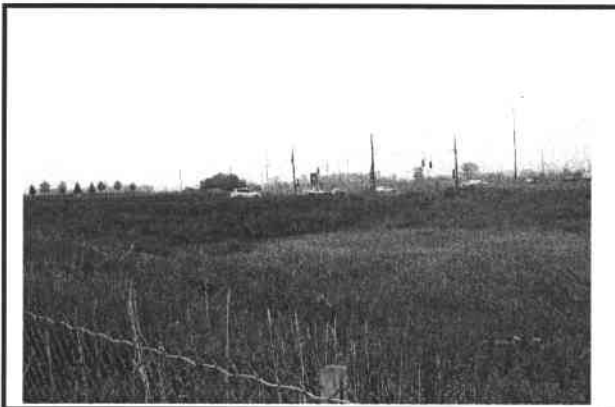
Site not accessible due to fence. Unable to verify pool depth, but appears to be at least 10 feet.

Inspection Date:

October 21, 2004

Comments:

Extensive cattail colonization limits visibility of pool depth.



View looking toward Elm Creek Blvd and TH169

