

Project Review: SC2002-15
Brunswick Crossing Removal, Zane Ave. Culvert Replacement

Project Location: MAP: 10
Brooklyn Park
Brunswick Ave at Shingle Creek
Rem street crossing & repl with ped bridge; replace 2-72" culverts with 1-12'x7' box culvert

Inlet (s): None

Outlet(s): None

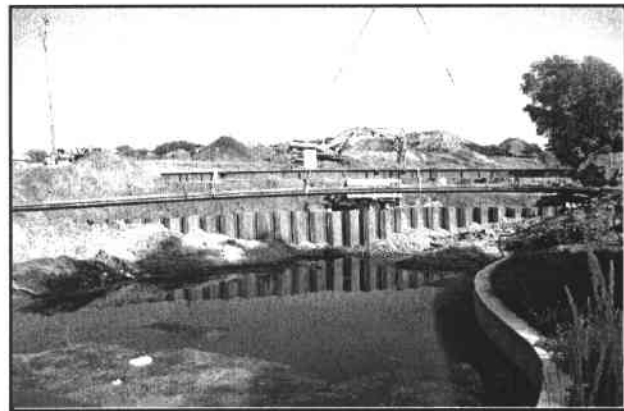
Basin(s): None

Inspection Date: September 1, 2004

Comments: Brunswick removal and ped bridge crossing complete. Zane crossing still under construction, completion expected fall 2004.



Brunswick pedestrian bridge



Zane Avenue crossing construction