

Project Review:

WM2002-12

Hawthorn Bend: 29 acre residential

Project Location:

MAP:

Brooklyn Park

SW quad of 105th Parkway & Noble Ave
2 ponds, NE and SE behind houses

Inlet (s): **North Pond south of Oxbow Creek Drive** - erosion at southwest inlet; sedimentation at southwest inlet.

South Pond north of 103rd Avenue - erosion at southwest and north inlets; sedimentation at both inlets.

Outlet(s): **North Pond south of Oxbow Creek Drive** - no outlet located.

South Pond north of 103rd Avenue - no outlet located.

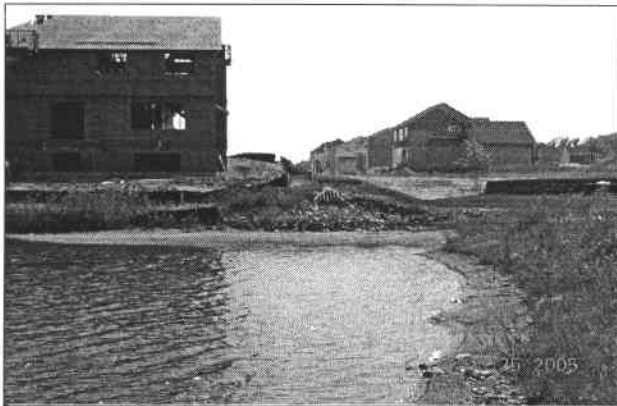
Basin(s): **North Pond south of Oxbow Creek Drive** - well vegetated with a permanent pool.

South Pond north of 103rd Avenue - poorly vegetated at water level. Reseed bare soil areas, as necessary.

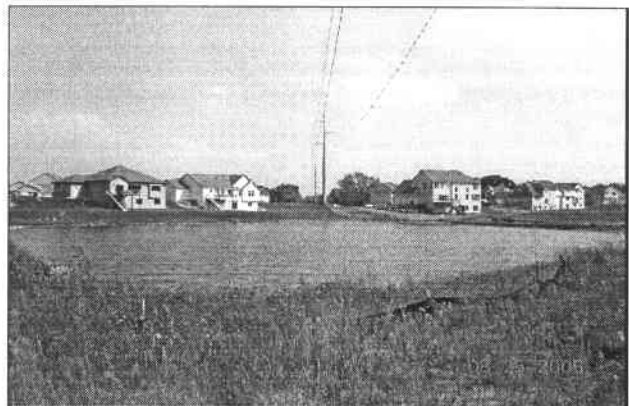
Inspection Date: August 25, 2005

Comments: **North Pond south of Oxbow Creek Drive** - Repair erosion and remove sediment at southwest inlet.

South Pond north of 103rd Avenue - Repair erosion and remove sediment at both inlets. Reseed bare soil areas, as necessary.



Erosion at southwest inlet



North pond looking southeast



South pond-southwest inlet



South pond-north inlet