

Project Review:**WM2003-06**

Orchard Trail: 43 residential lots

Project Location:

Brooklyn Park

MAP:

SW quad 105th & Noble

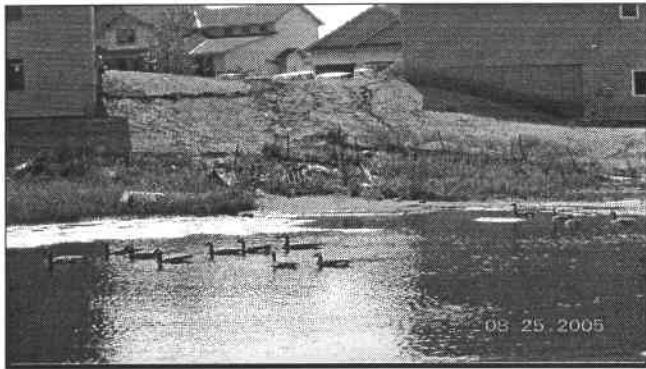
3 existing and 1 new pond: north and south ponds enlarged,

Inlet (s):**Pond 1 (b/t Orchard and Noble, south of 104th)** - erosion at southwest inlet; poor erosion control at perimeter.**Pond 2 (southeast of Orchard & Noble Pond)** - Erosion along west bank**Pond 3 (Southwest of Oxbow Creek and Noble)** - OK, stabilized and not obstructed.**Pond 4 (Southeast of Oxbow Creek and Noble)** - Not visible.**Outlet(s):****Pond 1** - OK, submerged outlet pipe to wetland mitigation to the southeast.**Pond 2** - OK, outlet pipe to east.**Pond 3** - OK, submerged outlet pipe to storm sewer in street.**Pond 4** - It does not appear that outlet structure was built correctly.**Basin(s):****Pond 1** - Vegetated with permanent pool, but erosion on side slopes.**Pond 2** - Vegetated, except for west bank, with permanent pool.**Pond 3** - OK, vegetated with permanent pool.**Pond 4** - OK, vegetated with permanent pool.**Inspection Date:** August 25, 2005**Comments:****Pond 1** - Stabilize erosion at southwest inlet. Install erosion control at pond perimeter.**Pond 2** - Stabilize erosion along west bank of pond.**Pond 3** - No recommended improvements.**Pond 4** - Locate inlets. Confirm that pond outlet structure was constructed as designed.

Pond 1 - looking southeast



Pond 2 - southeast of pond



Pond 1 - erosion at southwest inlet



Pond 4 - looking northwest - outlet grate looks high



Pond 3 - looking southeast



Pond 4 - inlet pipe buried?