

3235 Fernbrook Lane N • Plymouth, MN 55447
 Tel: 763.553.1144 • Fax: 763.553.9326
 Email: judie@jass.biz • Website: www.shinglecreek.org

February 4, 2021

Commissioners
 Members of the TAC
 Shingle Creek and West Mississippi
 Watershed Management Commissions
 Hennepin County, Minnesota

The agendas and meeting packets for both the TAC and regular meetings are available to all interested parties on the Commission's web site at
<http://www.shinglecreek.org/tac-meetings.html> and
<http://www.shinglecreek.org/minutes--meeting-packets.html>

Dear Commissioners and Members:

Regular meetings of the Shingle Creek and West Mississippi Watershed Management Commissions will be held **Thursday, February 11, 2021, at 12:45 p.m.** This will be a virtual meeting.

The Joint SCWM Technical Advisory Committee will meet at 11:30 a.m., prior to the regular meeting.

Until further notice, all meetings will be held online to reduce the spread of COVID-19. **To join a meeting**, click <https://us02web.zoom.us/j/834887565?pwd=N3MvZThacmNRVDFrOWM3cU1KRU5qQT09>, which takes you directly to the meeting.

OR, go to www.zoom.us and click **Join A Meeting**. The meeting ID is **834-887-565**. The passcode for this meeting is **water**.

If your computer is not equipped with audio capability, you need to dial into one of these numbers:

+1 929 205 6099 US (New York)	+1 312 626 6799 US (Chicago)	+1 669 900 6833 US (San Jose)
+1 346 248 7799 US (Houston)	+1 253 215 8782 US	+1 301 715 8592 US

Meetings remain open to the public via the instructions above.

Please email me at judie@jass.biz to confirm whether you or your Alternate will be attending the regular and TAC meetings. Thank you.

Regards,

Judie A. Anderson
 Administrator

cc: Alternate Commissioners	Member Cites	Troy Gilchrist	TAC Members
Metropolitan Council	Wenck/Stantec		

Z:\Shingle Creek\Meetings\Meetings 2021\02 Notice_Regular and TAC Meetings .docx



3235 Fernbrook Lane N • Plymouth, MN 55447
 Tel: 763.553.1144 • Fax: 763.553.9326
 Email: judie@jass.biz • Website: www.shinglecreek.org

A meeting of the joint Technical Advisory Committee (TAC) of the Shingle Creek and West Mississippi Watershed Management Commissions is scheduled for **11:30 a.m., Thursday, February 11, 2020. This will be a virtual meeting.** To join the Zoom Meeting: <https://us02web.zoom.us/j/87659246193>

Or dial by your location:

+1 301 715 8592 US (Germantown)	+1 312 626 6799 US (Chicago)
+1 929 205 6099 US (New York)	+1 253 215 8782 US (Tacoma)
+1 346 248 7799 US (Houston)	+1 669 900 6833 US (San Jose)

Meeting ID: **876 5924 6193** Passcode: **water**

A G E N D A

1. Call to Order.
 - a. Roll Call.
 - b. Approve Agenda.*
 - c. Approve Minutes of Last Meeting.*
2. Twin/Ryan Lake Subwatershed Assessment.*
 - a. Presentation.*
 - b. Proposal.
3. Funding Ryan Creek Improvements.*
4. Solicit 2021 and 2022 CIP Projects.*
 - a. Application.
5. Other Business.
6. Next TAC meeting is scheduled for _____..
7. Adjournment.

Z:\Shingle Creek\TAC\2021 TAC\TAC Agenda February 11 2021.doc



3235 Fernbrook Lane N • Plymouth, MN 55447
 Tel: 763.553.1144 • Fax: 763.553.9326
 Email: judie@jass.biz • Website: www.shinglecreek.org

MINUTES

December 1, 2020

A virtual meeting of the Technical Advisory Committee (TAC) of the Shingle Creek and West Mississippi Watershed Management Commissions was called to order by Chairman Richard McCoy at 10:33 a.m., Tuesday, December 1, 2020.

Present were: Andrew Hogg, Brooklyn Center; Mitch Robinson, Brooklyn Park; Mark Ray, Crystal; Derek Asche, Maple Grove; Ben Scharenbroich and Amy Riegel, Plymouth; Richard McCoy and Marta Roser, Robbinsdale; Ed Matthiesen and Diane Spector, Wenck Associates, Inc.; Eric Alms, Minnesota Pollution Control Agency; and Judie Anderson and Amy Juntunen, JASS.

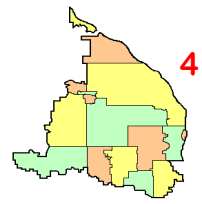
Not represented: Champlin, Minneapolis, New Hope and Osseo.

- I. Motion by Ray, second by Asche to **approve the agenda.*** *Motion carried unanimously.*
- II. Motion by Ray, second by Riegel to **approve the minutes*** of the September 24, 2020 meeting. *Motion carried unanimously.*
- III. **Opportunity Grant Applications.**

A. The City of Robbinsdale is seeking to submit an application for funding to **restore shoreline on Ryan Lake,*** reducing bank erosion and sedimentation into the lake and downstream waterbodies by implementing stabilization projects along the shoreline. Water from Crystal Lake is pumped into Ryan Lake when the elevation is above 847.6 feet. The proposed restoration would fix existing bank erosion and sloughing as well as prevent future erosion due to increased water in the system. The project involves installing a double row of coconut coir logs onto the shoreline, planting forbs or grass plugs into the logs, and professionally maintaining the shoreline for three years. The cost is estimated at \$10,000 per property. Opportunity Grants award funds up to \$100,000; Commission cost-share would total \$50,000 from the Partnership Cost Share Account.

Motion by Ray, second by Riegel to approve this application for submittal at the amounts noted above. *Motion carried unanimously.*

B. The Shingle Creek Commission has completed an application for a **Channel Modification to Enhance SRP Removal.*** The modification would consist of the installation of a media filter in a channel conveying high SRP (soluble reactive phosphorus) from a wetland (639W) in the City of Crystal to Upper Twin Lake, which is impaired for excess nutrients. The commission had previously conducted a pilot field trial to evaluate the effectiveness of several types of media in reducing SRP. This project would increase the project scale to treat all the outflow from the wetland by lining approximately 300 feet of the outlet channel with interconnected cells of the two best-performing media. It is estimated the project will reduce SRP load to Upper Twin Lake by about 50#/year, about 25% of the remaining phosphorus load. The total cost of the project is estimated at \$125,000 with the Commission sharing \$50,000 of the cost from the



Closed Project Account and requesting \$75,000 from the Opportunity Grant program. Submittal of this project was approved at the Commission's November meeting.

IV. 2021 Project Review Fee Schedule.* Spector noted that for calculating fees for reviewing redevelopment projects under 50% disturbed, Staff have interpreted the site area size to be the project limits rather than the parcel or overall site area. The members agreed that Staff should continue with this interpretation, which will be formally added to the Rules and Standards the next time they are amended.

Motion by Ray, second by Hogg to approve this action. *Motion carried unanimously.*

V. MS4 General Permit Reauthorization. The Minnesota Pollution Control Agency has reissued the MS4 General Permit. City staff within the SCWMC (and other area watersheds) are currently working to determine the changes to the rules and the implications they have to individual MS4 cities and the Commissions. A group of city staff members are working together to determine the best approach to meeting the rules in the most cost-effective way possible. This includes, but is not limited to, working with the West Metro Water Alliance (WMWA) on educational efforts that will focus specifically around Chlorides, Pet Waste and other topics of importance such as TMDLs, water quantity and excessive nutrient control.

The members will continue to discuss the MS4 General Permit in the next 12-18 months to ensure city staff have the resources they need in order to be in compliance with the permit going forward.

VI. Other Business.

A. Grant Awards. The Commission has been informed that both the Connections II and Meadow Lake alum projects have been approved for funding with Clean Water Grants. Since both of these projects were also submitted for Watershed-based funding, Staff is working with Board of Water and Soil Resources (BWSR) staff to best leverage these funds or, alternatively, to substitute the Bass Creek project for WBIF funding.

B. Robbinsdale Project. McCoy shared the most recent site photo of the Water Treatment Plant construction site. He pointed out the clearwell walls and internal baffles and noted that forming up for the floor of the high service pump area is progressing. The contractor is taking advantage of the milder than usual weather and is making good progress.

VII. Next meeting – 10:30 a.m., Wednesday, January 20, 2021. This also will be a virtual meeting.

There being no further business for the good of the cause, the meeting was adjourned at 11:30 a.m.

Respectfully submitted,

A handwritten signature in black ink, appearing to read 'Judie A. Anderson'.

Judie A. Anderson
Recording Secretary
JAA:tim

Z:\Shingle Creek\TAC\2020 TAC\12-01-2020 TAC minutes.docx



To: Shingle Creek WMO TAC/Commissioners

From: Ed Matthiesen, P.E.
Todd Shoemaker, P.E.

Date: February 4, 2021

Subject: Crystal/Robbinsdale Subwatershed Plan

**Recommended
TAC/ Commission
Action**

Authorize the completion of a subwatershed assessment for the Twin/Ryan Lake tributary area to develop a master Gaulke Pond and Crystal Lake Pump Operating Plan.

The cities of Robbinsdale and Crystal are developing or revising existing pumping plans to outlet areas within their cities into the Twin and Ryan Lakes chain. As previously discussed, Robbinsdale is installing a permanent emergency overflow from Crystal Lake into Ryan Lake. The City of Crystal has in place a pumping operation plan for managing the Gaulke Pond chain that receives runoff from Crystal and New Hope. That system outlets into Lower Twin Lake (See attached Figure 1). The city is looking to make improvements to that pond system to provide more storage and alleviate flooding, and potentially revise its pump operation plan.

With both cities proposing emergency flood relief pumping to the Twin/Ryan Lake system, it makes sense to develop a coordinated pumping plan. Because there are multiple cities involved (New Hope, Crystal, and Robbinsdale upstream and Minneapolis downstream), they have requested that this be completed as a Subwatershed Plan.

The Subwatershed Assessment Account has about \$8,800 carried over, with another \$10,000 in the 2021 Shingle Creek budget for a total of \$18,800. Attached is a scope of work to complete this assessment in the amount of \$18,000.

The TAC will discuss this proposal at its February 11 meeting just prior to the Commission meeting and make a recommendation to the Commission for consideration.

Figure 1. Project location.





Shingle Creek WMC

2021 Ryan Lake Subwatershed Assessment



Agenda

1. Project need
2. Project area
3. Proposed analysis
4. Project deliverables

Project Need

- Desire by New Hope, Crystal and Robbinsdale to reduce flooding
 - New Hope: Old Dutch Pond area
 - Crystal: Memory Lane, Brownwood, Gaulke Ponds
 - Robbinsdale: Crystal Lake
- Crystal and Robbinsdale pump water to Twin and Ryan Lakes
 - Old Dutch => Memory Lane => Brownwood => Gaulke => Twin Lake
 - Crystal Lake => Ryan Lake
- Coordinated effort by SC WMC
 - Evaluate inputs from each city
 - Consider multiple timing and flow scenarios
 - Predict effect on Twin and Ryan Lake high water levels (HWL)

Project Area



Proposed Analysis

- Update SC SWMM (Stormwater Management Model) to include
 - New Hope & Crystal models
 - Watershed data and Old Dutch & Brownwood valves
- Operating plan for Gaulke Pond and Crystal Lake pumps
 - Timing
 - Flow rates
- Influence of France Ave weir
 - On Crystal Lake
 - Is weir design “outdated”?
- Influence of valves on Old Dutch & Brownwood Ponds
- Coordination meetings with cities and MN DNR

Project Deliverables, Schedule & Budget

- Identify & survey elevations of flood prone properties (max 8)
- Prepare maps of predicted HWLs
- Written “Gaulke Pond & Crystal Lake Pump Operating Plan”
- Permit applications (if applicable) by cities
- Schedule: February – June 2021
- Budget = \$18,000

Questions?



Stantec Consulting Services Inc.

7500 Olson Memorial Highway, Suite 300, Golden Valley, MN 55427

January 25, 2021
File: P001240-21-504

Mr. Andy Polzin
Shingle Creek WMC Chair
18605 29th Avenue N
Plymouth, MN 55447

Dear Mr. Polzin:

Reference: Proposal for 2021 Ryan Lake Subwatershed Assessment

The purpose of this letter is to provide the Shingle Creek Watershed Management Commission (SCWMC) with a scope of work and budget for professional engineering services related to the Ryan Lake Subwatershed. This letter outlines the scope of work and budget to evaluate proposed pumping inputs to Ryan Lake from the Cities of Crystal and Robbinsdale and to prepare a written operating plan.

Budget, Schedule & Deliverables

- **Fee estimate** The cost for Wenck to complete the scope of work detailed below is \$18,000. Subtotals by task are provided below.
- **Schedule** We will deliver the final draft of the operating plan by June 30, 2021.
- **Deliverables**
 - a. Final draft of "Gaulke Pond & Crystal Lake Pump Operating Plan".
 - b. Associated maps and scenario results.
 - c. Notes from four proposed meetings.

Scope of Work

- **Task 1: Project Coordination, \$3,800**
 - a. Schedule, coordinate, and host virtual meeting with the Cities of Crystal, Robbinsdale, New Hope, Brooklyn Center, and Minneapolis staff to review model scenario results.
 - b. Schedule, coordinate, and host virtual meeting with City staff to review updated model scenario results.
 - c. Schedule, coordinate, and host virtual meeting with MnDNR, City staff to review model results and management recommendations.
 - d. Present proposed operating plan at SCWMC meeting.
- **Task 2: Update SCWMC SWMM Model, \$1,200**
 - a. Update SWMM model
 - i. Watershed data

Reference: P001240-21-504

- ii. Incorporate New Hope and Crystal SWMM models.
 - iii. Simulate open valves at Old Dutch and Brownwood Ponds.
 - b. Execute model to serve as “existing” conditions.
 - i. Gaulke pump turns on 24 hours after start of rainfall
 - ii. 3.12 cfs (1,400 gpm) from Gaulke Pond
 - iii. No pumping from Crystal Lake
 - c. Evaluate
 - i. Benefit, if any, of valves at Old Dutch & Brownwood Ponds.
 - ii. Review function and hydraulic capacity of France Avenue weir. Evaluate impact of Atlas 14 rainfall data on weir function.
 - iii. Capacity of pipe on Oregon Avenue if lined and effect on downstream high water elevations.
 - iv. Expansion of Simm’s Pond influence on high water elevations.
- **Task 3: Analyze Scenarios & Management Options, \$7,000**
 - a. Evaluate pumping scenarios:
 - i. Scenario 1
 - Gaulke pump turns on 24 hours after start of rainfall (per the current Gaulke Pond operating agreement).
 - 5.5 cfs from Gaulke
 - 2.56 cfs (1,150 gpm) from Crystal Lake to Shingle Creek
 - 2.67 cfs (1,200 gpm) from Crystal Lake to Ryan Lake

Reference: P001240-21-504

ii. Scenario 2

- Gaulke pump turns on 24 hours after start of rainfall (per the current Gaulke Pond operating agreement).
- 11 cfs from Gaulke
- 2.56 cfs from Crystal Lake to Shingle Creek
- 2.67 cfs from Crystal Lake to Ryan Lake

iii. Scenarios #3 and #4

- Reevaluate Scenarios #1 and #2 but with Gaulke pump turning on earlier than in current operating agreement.
- Timing and flow rates to be discussed with City of Crystal and City of Robbinsdale before executing models.

b. Evaluate

- i. Upsizing of 15" pipe to 18" pipe in 40th Street between Adair & Zane.
- ii. Is operation of Gaulke Pond and Crystal Lake pumps mutually exclusive?
 - Is Crystal Lake discharge governed by the France weir?
 - Does Gaulke Pond pumping prohibit pumpig from Crystal Lake? And vice versa?
 - How long does it take for Gaulke Pond pumped volume to discharge from Ryan Lake?
 - If Crystal Lake is pumping, what is max pump flow from Gaulke Pond to not cause flooding problems?

• **Task 4: Reporting**
\$6,000

- a. Identify and survey elevations of up to eight flood-prone properties surrounding Twin and Ryan Lakes.

January 22, 2021
 Shingle Creek WMC
 Page 4 of 5

Reference: P001240-21-504

- b. Prepare maps of up to four scenario results.
- c. Prepare written "Gaulke Pond & Crystal Lake Pump Operating Plan."

Study Assumptions

- Design plans, flow rates, operating elevations, rating curves, and/or other relevant pump data will be provided to us by City of Crystal and City of Robbinsdale.
- SWMM model from the City of New Hope will be provided for the Old Dutch and Memory Ponds.
- SWMM model from the City of Crystal will be provided for the Central Core (Memory to Gaulke pond chain)
- Permit applications, if applicable, will be submitted by others.

Project Team

The following staff have been selected to execute the Scope of Work.

- Project Manager Todd Shoemaker
- Water Resources Erik Megow, Ross Mullen, Rena Weis
Engineers
- Senior Water Ed Matthiesen
Resources
Engineer

On behalf of the Wenck – Stantec, thank you for this opportunity to continue working with the SCWMC. Should you have any questions or need clarification of anything presented in the attached proposal, please do not hesitate to call or email us.

Regards,

Stantec Consulting Services Inc.

Ed Matthiesen, PE (MN)
 Commission Engineer, Principal Engineer
 Phone: 612-325-6442
ematthiesen@wenck.com

Todd Shoemaker, PE (MN, IA), CFM
 Sr. Associate, Water Resources Engineer
 Phone: 612-414-7166
tshoemaker@wenck.com

January 22, 2021
Shingle Creek WMC
Page 5 of 5

Reference: P001240-21-504

Proposal Terms & Acceptance

- Stantec will complete this scope of work according to the master services agreement with SCWMC.
- Stantec will perform the scope of work on a time and materials basis and will not exceed the authorized budget without prior authorization.
- To accept the proposal as stated above, please complete the following:

Shingle Creek WMC

Type or Print Name

Signature

Title

To: Shingle Creek WMO TAC

From: Ed Matthiesen, P.E.
Diane Spector

Date: February 4, 2021

Subject: Funding Ryan Creek Improvements

Recommended TAC Action	Discuss. If in agreement, make a recommendation to the Commission.
-----------------------------------	--

The Commission and TAC had previously discussed Robbinsdale's plan to install a permanent emergency overflow pump system from Crystal Lake to Ryan Lake. As a part of the hydrologic and hydraulic analysis modeling of potential impacts to lake levels, it was recommended that the City remove excessive cattail growth around the outlet of Ryan Lake, and in the wetland and channel between Lower Twin and Ryan Creek (see attached figures). The purpose was to allow for a faster flow through the system to limit periods of high water on the lakes. The City recently took public bids on this project but rejected them because they exceeded the Engineer's Estimate by a considerable amount.

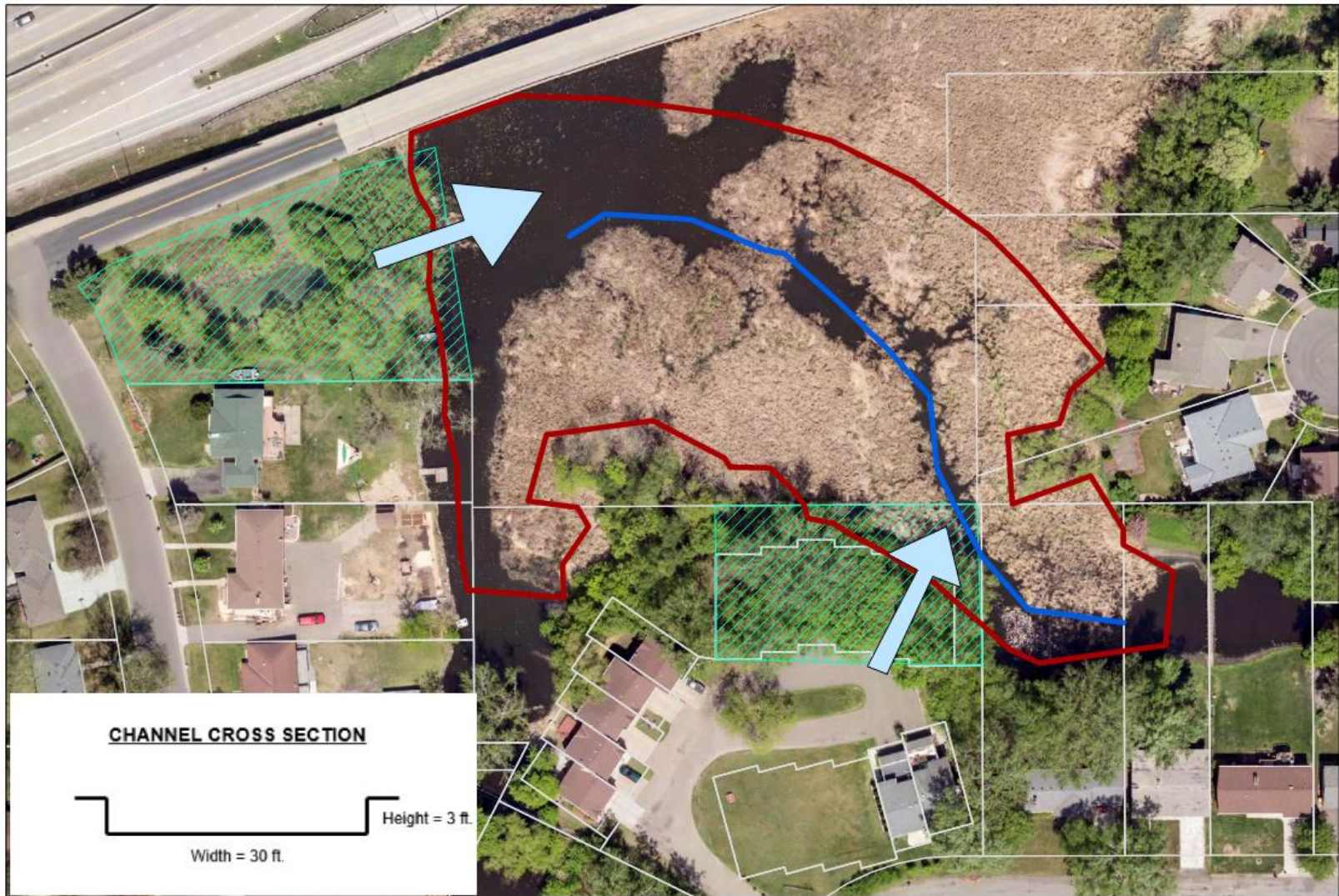
The proposal to develop the Gaulke Pond and Crystal Lake Pumping Plan includes the preparation of various pumping scenarios. It also includes assessing the role of the France Avenue weir. Modifications to the weir are not off the table.

We would like to have a broad policy discussion regarding whether a project such as cattail removal and dredging and potential modifications to the weir might qualify as a Commission project with watershed significance and thus qualify for levy funding. This is a multi-jurisdictional drainage project intended to limit downstream flooding impacts.

1. Does this project fall under the existing Cost Share Policy?

Eligible improvements include both structural and nonstructural activities. Routine maintenance or localized improvements are not eligible for cost share. Thus, a local street flooding issue is not of watershed priority, but a local flooding issue that creates significant erosion and sedimentation impacting a downstream resource may be a watershed priority.

2. Is this in the same class of improvements as a stream stabilization project where the Commission will 100% fund in- and on-bank improvements similar to a lake internal load project? The Cost-Share Policy sets out criteria, including "Other Watershed Benefiting Improvements as Recommended by the TAC."
3. Would the TAC be willing to consider and recommend to the Commission funding a project to remove cattails and dredge channels to increase flood conveyance?

**Legend**

- Possible Point of Entry
- Robbinsdale Easements
- Channel Centerline
- Project Limits
- Hennepin County Parcels

City of Robbinsdale

Scope: Ryan Creek Channel Clearing Lower Twin Lake / Ryan Creek

110 55 0 110 Feet





To: Shingle Creek/West Mississippi WMO TAC

From: Ed Matthiesen, P.E.
Diane Spector

Date: February 14, 2021

Subject: Solicit New 2021 and 2022 CIP Projects

**Recommended
TAC Action**

Submit new 2021 and 2022 CIP projects to start the plan amendment process.

This is the annual call for potential revisions to the 2021 and 2022 CIP. Recall that the Commission can move projects between years without requiring a plan amendment.

Initial staff thoughts:

1. We will consult with the city of Plymouth to determine if the proposed Palmer Creek Estates stream stabilization projects falls into the new category of projects qualifying for 100% levy funding.
2. While it is essentially an extension of the SP Reduction Project, for clarity the upcoming SRP Channel Modifications at the Wetland 639W outlet should be added to the CIP as a standalone project.
3. Later this year the TAC and Commission will be embarking on the Fourth Generation Plan, including establishing a new CIP for 2023-2032 (!).

The current CIPs for Shingle Creek and West Mississippi are shown in Tables 1 and 2. Note that they include projects that have been on the CIP project for years which keep getting pushed back a year until such time as they are ready for implementation.

New projects should be submitted by March 15 with the understanding that new projects proposed for levy certification in Fall 2021 should be presented in detail at the TAC's March 25 meeting, although a full feasibility report is not required at that time. The TAC and Commission may request more detailed information about 2021 projects at the public meeting to consider a Minor Plan Amendment at the April 8, 2021 meeting. Attached to this memo is the Request to Add a Project to the CIP.

Cities with projects on the current 2021 or 2022 CIP can request they be moved or removed from the CIP at any time.

Table 1. Current Shingle Creek CIP.

CAPITAL IMPROVEMENT PROGRAM	2020	2021	2022	Comments
<i>Cost Share Program</i>	200,000	200,000	200,000	
Commission Contribution	100,000	100,000	100,000	
Local Contribution	100,000	100,000	100,000	
<i>Partnership Cost-Share BMP Projects</i>	100,000	100,000	100,000	
Commission Contribution	50,000	50,000	50,000	
Local Contribution	50,000	50,000	50,000	
<i>Lake Internal Load Improvement Project</i>	200,000		200,000	Meadow Lake Mgmt Plan
Commission Contribution	200,000		200,000	
Local Contribution	0		0	
<i>Shingle Creek Restoration, Regent to Brooklyn Blvd</i>	400,000			Connections II project
Commission Contribution	400,000			
Local Contribution	0			
<i>Plymouth Enhanced Street Sweeper</i>	350,000			Added by MPA
Commission Contribution	75,000			
Local Contribution	275,000			
<i>Shingle Creek or Bass Creek Restoration Project</i>	500,000			Bass Creek Project
Commission Contribution	500,000			
Local Contribution	0			
<i>Maple Grove Pond P57</i>		648,000		Moved to future
Commission Contribution		162,000		
Local Contribution		486,000		
<i>Maple Grove Pond P33</i>		574,000		Moved to future
Commission Contribution		143,500		
Local Contribution		430,500		
<i>Shingle Creek Brookdale Park Habitat Enhancement</i>		150,000		Nothing pending
Commission Contribution		150,000		
Local Contribution		0		
<i>Minneapolis Webber Park Stream Restoration</i>		500,000		Nothing pending
Commission Contribution		500,000		
Local Contribution		0		
<i>Minneapolis Flood Area 5 Water Quality Projects</i>		6,000,000		Nothing pending
Commission Contribution		250,000		
Local Contribution		5,750,000		
<i>Maple Grove Pond P55</i>		855,000		Moved to future
Commission Contribution		213,800		
Local Contribution		641,200		
<i>Palmer Creek Estates Bass Creek Restoration</i>		450,000		Added by MPA Review for 100%
Commission Contribution		112,500		
Local Contribution		337,500		
TOTAL PROJECT COST	\$1,750,000	\$9,477,000	\$500,000	
TOTAL COMMISSION SHARE	\$1,325,000	\$1,681,800	\$350,000	
TOTAL CITY SHARE	\$425,000	\$7,795,200	\$150,000	

Table 2. Current West Mississippi CIP.

CAPITAL IMPROVEMENT PROGRAM	2020	2021	2022	Comments
<i>Cost Share Program</i>	100,000	100,000	100,000	
Commission Contribution	50,000	50,000	50,000	
Local Contribution	50,000	50,000	50,000	
<i>River Park Stormwater Improvements</i>	485,000			Added by MPA 9/19
Commission Contribution	121,250			
Local Contribution	363,750			
<i>Mississippi Crossings Phase B Infiltration Vault</i>	400,000			Moved per Todd
Commission Contribution	100,000			
Local Contribution	300,000			
<i>Champlin Woods Trail Rain Gardens</i>		180,000		Moved per Todd
Commission Contribution		45,000		
Local Contribution		135,000		
<i>Wetland Restoration Project</i>		250,000		Moved, nothing pending
Commission Contribution		62,500		
Local Contribution		187,500		
TOTAL PROJECT COST	985,000	530,000	100,000	
TOTAL COMMISSION SHARE	271,250	157,500	50,000	
TOTAL CITY SHARE	713,750	372,500	50,000	



Shingle Creek and West Mississippi Watershed Management Commissions Request to Add an Improvement to the Capital Improvement Program

The Shingle Creek and West Mississippi Watershed Management Commissions share the cost of high watershed-priority capital improvements and demonstration projects through the Commissions' Capital Improvements Program (CIP). High-priority watershed capital improvements are those activities that go above and beyond general city management activities to provide a significant improvement to the water resources in the watershed. Thus, a local street flooding issue is not of watershed priority, but a local flooding issue that creates significant erosion and sedimentation impacting a downstream resource may be a watershed priority.

Eligible improvements include both structural and nonstructural activities. The Commissions' Cost Share Policy for Public Improvements provides for up to 25 percent of the cost of qualifying activities to be shared by all property in the watershed, with the balance funded by the local governments participating in or benefiting from the improvement. *There is no maximum share; the maximum is limited by the amount the Commission is willing/able to certify as a levy.* The Commissions have developed a set of criteria by which proposals will be scored, with those scoring a minimum number of points on the proposal form screening questions advancing to a prioritization stage by the Technical Advisory Committee (TAC). Prioritization will be based on cost effectiveness, amount of improvement achieved, and regional significance.

Certain improvements may be eligible to receive 100% funding from the Commission. These include but are not limited to lake internal load actions; in-stream restorations to reduce sediment oxygen demand and pollutant loading; projects to increase DO at wetland outlets; and actions required by TMDLs not associated with a pollutant for which a numerical reduction of improvement can be specified such as habitat enhancement.

Refer to the Commissions' Cost Share Policy for Public Improvements for more information.

Revised 8/8/19

Shingle Creek and West Mississippi Watershed Management Commissions
Capital Improvement Program Proposal

Date:	
City:	
Contact Name:	
Telephone:	
Email:	
Project Name:	
Proposed CIP Year:	
Total Estimated Cost:	\$
Total Estimated Commission Share: (Maximum smaller of 25%)	\$

In no more than two pages, please address the following questions. Attach a conceptual or preliminary site plan, and if available a drainage plan, and estimated benefiting area.

1. Please describe:
 - a. The proposed improvement and its estimated cost for construction, engineering, easement or land acquisition, and any other costs;
 - b. Its purpose;
 - c. The water resource(s) that would be affected by the project;
 - d. The anticipated improvement that would result from the proposed project, for example, estimated pounds of phosphorus removed annually; linear feet of streambank stabilized with native vegetation; square feet of vegetated buffer added; and
 - e. Data from by literature or academic/practitioner experience and documentation demonstrating the effectiveness of the proposed nonstructural practice.
2. Please describe how the proposed project addresses as many of the following as apply:
 - a. Improved water quality.
 - b. Prevention of flooding.
 - c. Prevention or correction of erosion.
 - d. Groundwater recharge.
 - e. Protection and/or enhancement of fish and wildlife habitat.
 - f. Improvement or creation of water recreation facilities.
3. Does the project address one or more TMDL requirements, and if so, which and by how much?
4. How does the proposed project implement a strategy identified in one or more TMDL Implementation Plans, Subwatershed Assessments, other special or feasibility study?
5. Do all the cities responsible for sharing the 75 percent balance of the cost of the project agree to go forward with the project? (It is not necessary to have a final agreement on the precise cost sharing yet.)
6. Is the project in your CIP and the CIP of other cost-sharing cities?
7. For nonstructural practices, how do you propose to monitor and demonstrate effectiveness?