



Project Overview: Shingle Creek/West Mississippi Watershed Management Commission

March 8, 2018



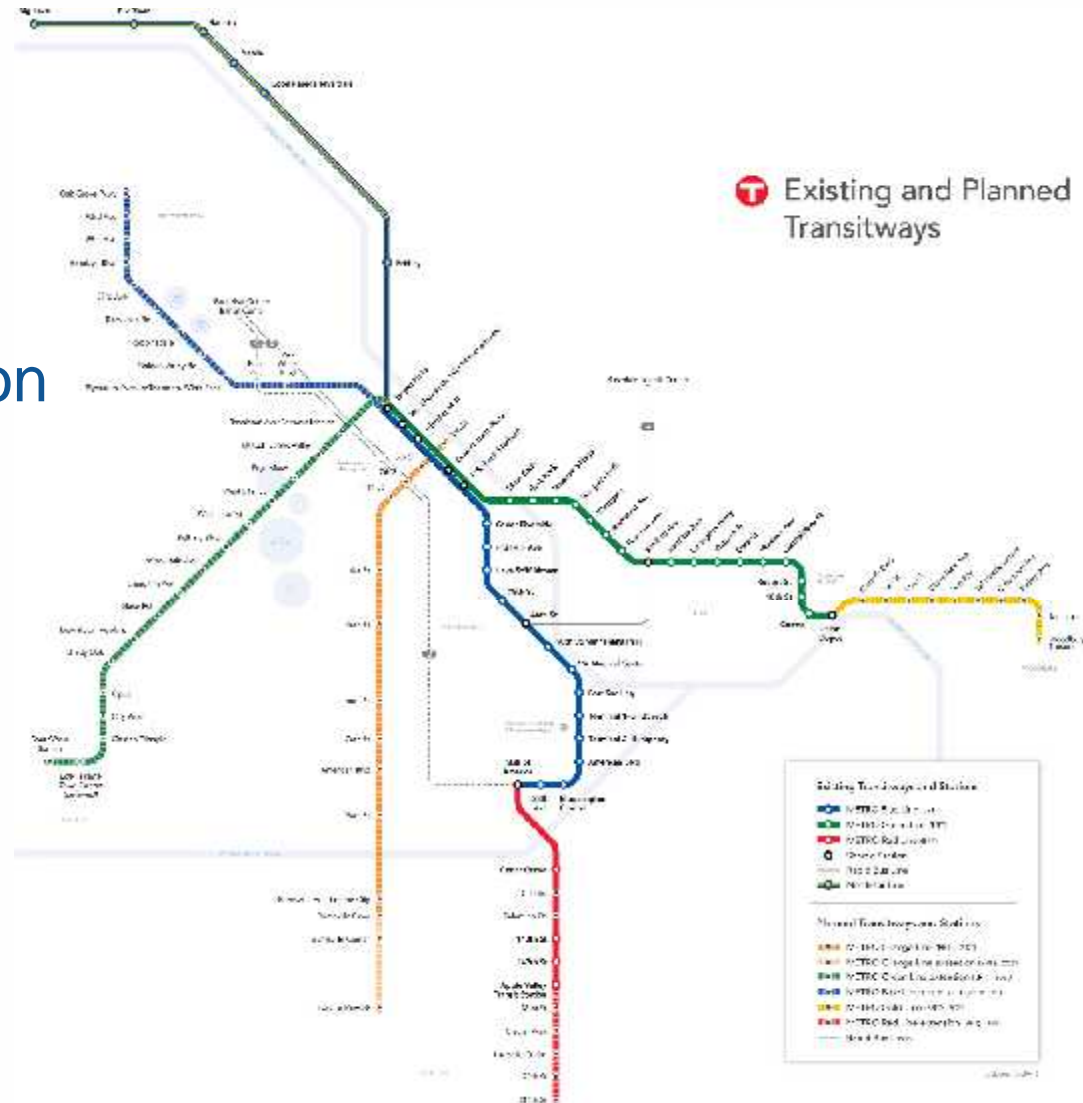
Agenda

- Project Overview
- Project Timeline
- Water Resources Overview
- Shingle Creek & West Mississippi WMC Overview
- Stormwater Management
- Community Outreach



METRO System: All-Day, Frequent Service

- Light Rail Transit
 - Blue Line
 - Green Line
 - Green Line Extension
 - Blue Line Extension
- Bus Rapid Transit
 - Red Line
 - Orange Line
 - Gold Line

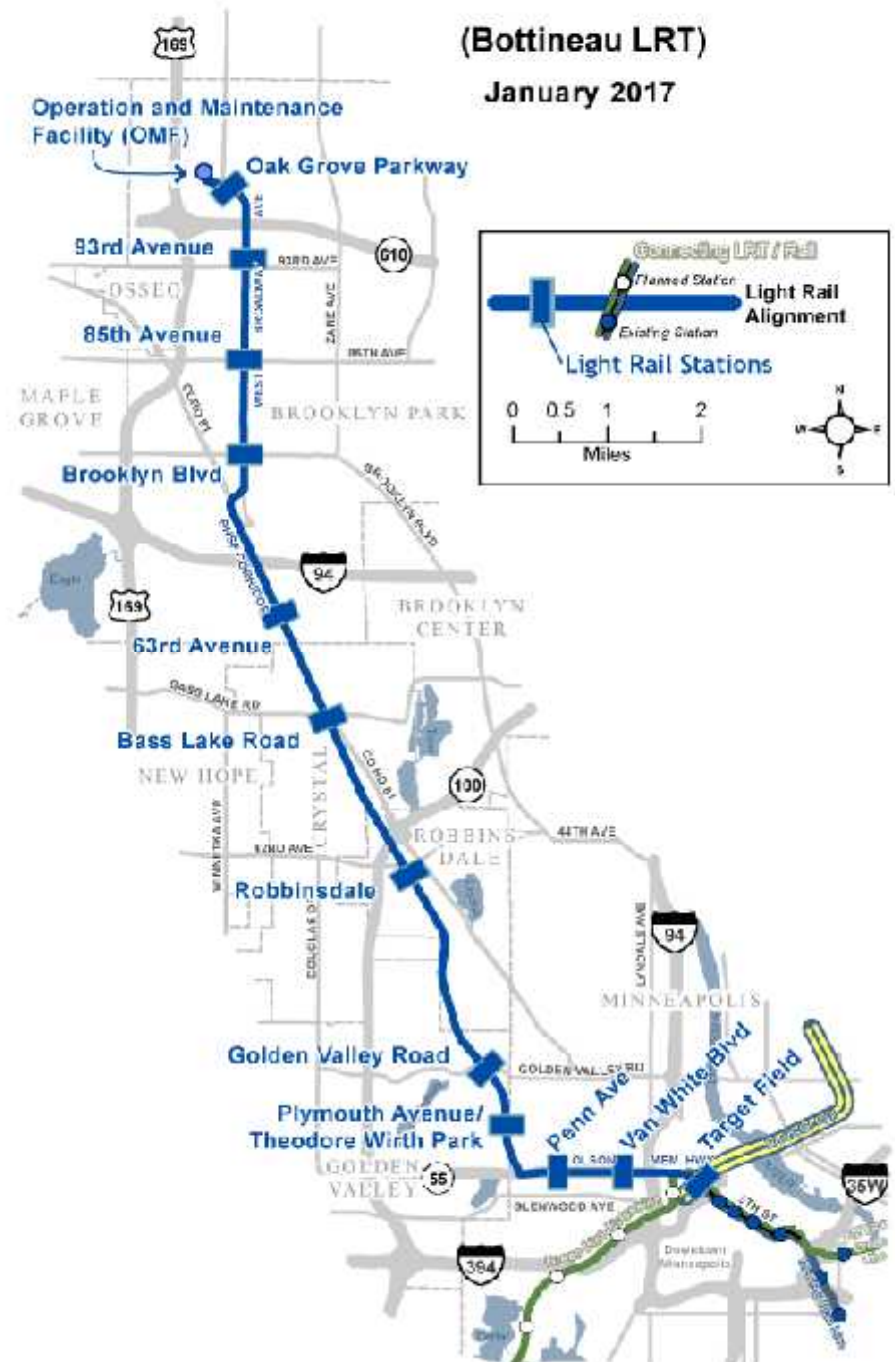


Project Overview

- 11 new LRT stations
- 13.5 miles of double track
- 27,000 est. rides by 2040
- Serving Brooklyn Park, Crystal, Robbinsdale, Golden Valley & Minneapolis
- One seat ride from Brooklyn Park to Bloomington

METRO Blue Line Extension (Bottineau LRT)

January 2017



METRO Blue Line Extension

- Will provide single seat trips to downtown Minneapolis, Minneapolis – St. Paul International Airport, and Mall of America
- Connections to the University of Minnesota and St. Paul via the Green Line



Project Timeline

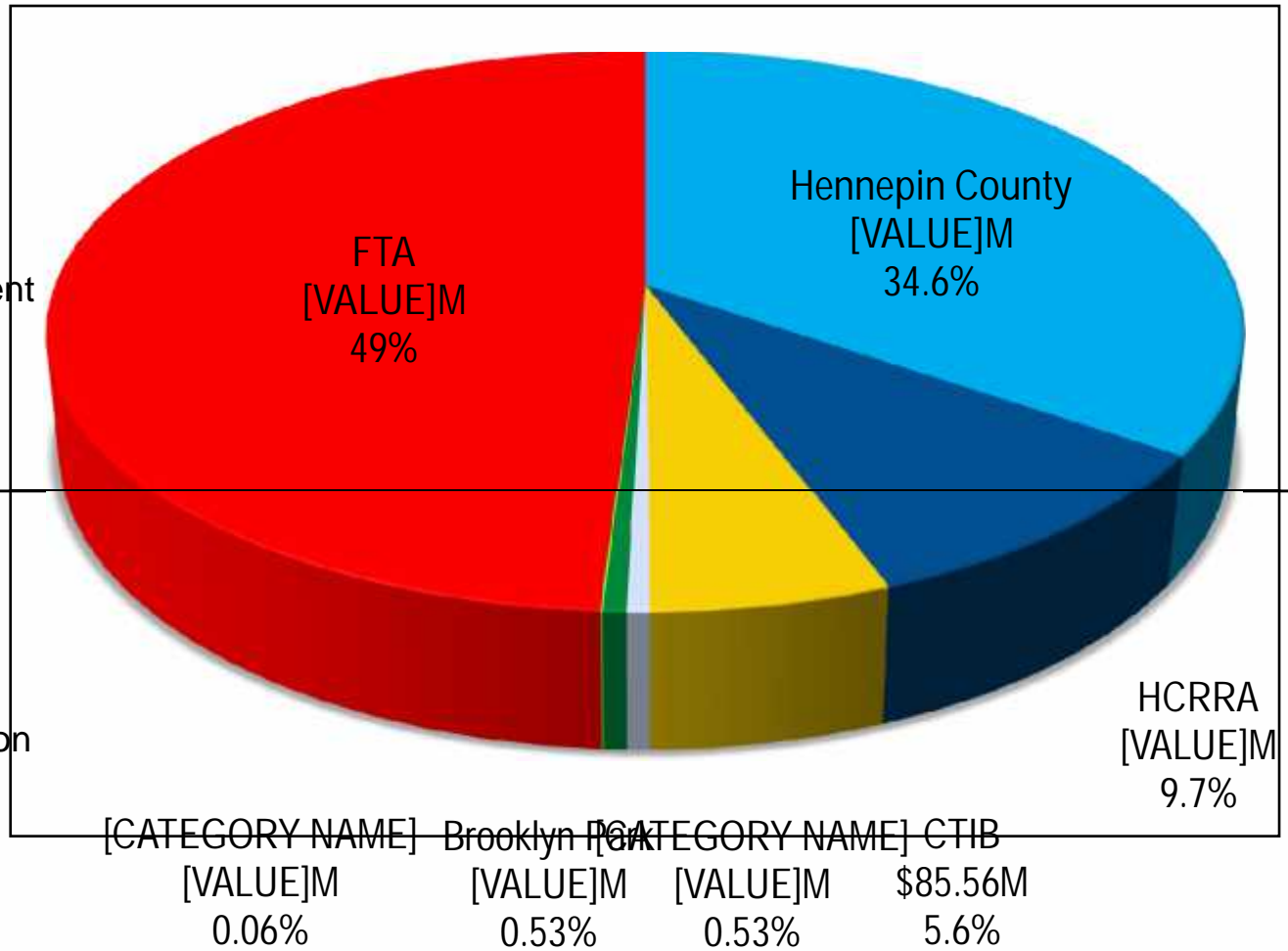
- Project Development
- Environmental/Municipal Consent
- Engineering
- Full Funding Grant Agreement
- Heavy Construction
- Passenger Operations



Funding Sources: \$1.536 Billion Budget

- Hennepin County
- Hennepin County RRA
- Counties Transit Improvement Board
- MnDOT

- Brooklyn Park
- State
- Federal Transit Administration



Water Resources Overview

- Located within Shingle Creek, West Mississippi and Bassett Creek Watershed

Management Commission jurisdictions



SCWMC & WMWMC Overview

- Stormwater Management BMPs
- Infiltration Rates
- Additional Non-Corridor Treatment
- Shingle Creek Crossing
- Floodplain Impacts & Mitigation at Shingle Creek and Setzler Pond
- N610 Stormwater Management



METRO Blue Line LRT Extension Project

February 2018



Stormwater Management BMPs

- Stormwater BMPs consists of: filtration, infiltration, underground detention and retention, tree trenches, bioretention, and wet detention basins.
- Project goal is to meet water quality and volume control standards for linear projects
 - 1.3” runoff from net new impervious infiltrated to meet WQ (60% TP and 85% TSS) and volume control, or
 - 1” volume control and NURP (2.5”) WQ
- Project goal is to meet existing 2-year, 10-year, and 100-year, 24-hour Atlas 14 peak discharge rates



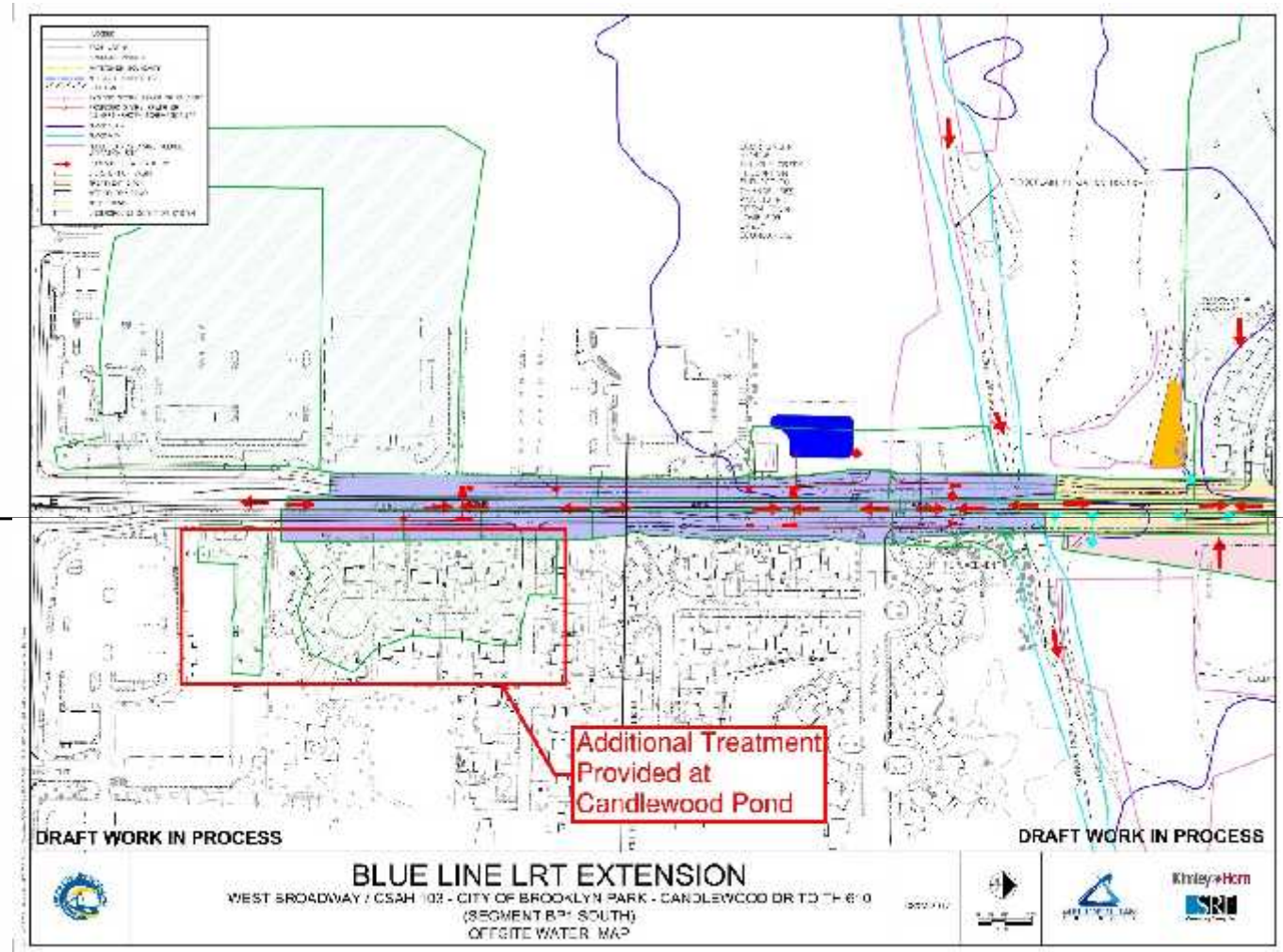
Infiltration Rates

- Minnesota Stormwater Manual: 8.3 inch/hour maximum infiltration rate
- NPDES Permit: For amended or disturbed soils the maximum infiltration rate is 4.1 inch/hour
- MPCA Project Specific Discussions: due to the soil types in SC/WMWMC, MPCA to allow a design rate of 6 inch/hour

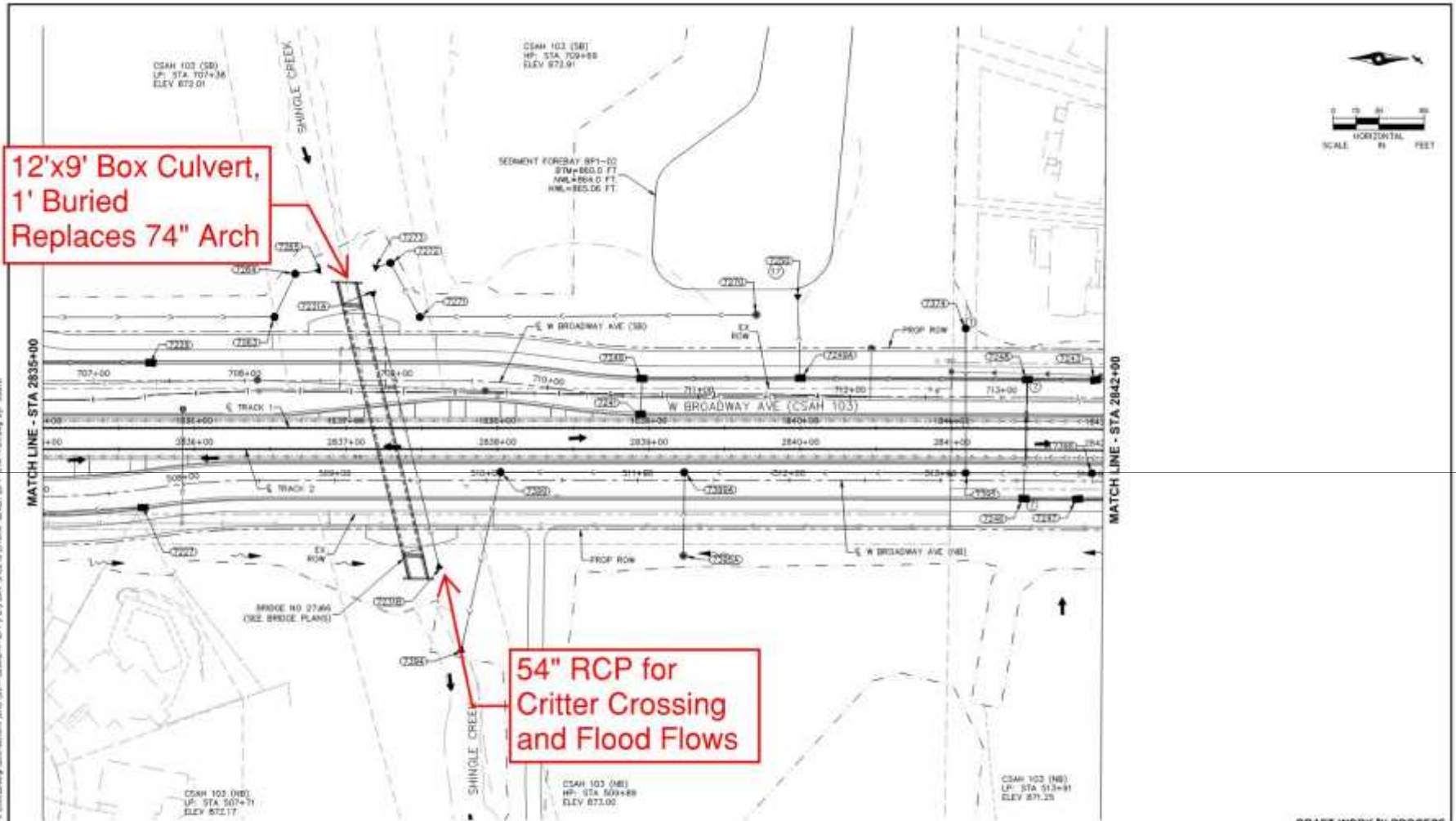


Additional Non-Corridor Treatment

- Occurs at:
 - Shingle Creek Pond
 - NHCC Underground
 - Candlewood Pond



Shingle Creek Crossing



REV.	DATE	BY	DESCRIPTION

I hereby certify that this plan was prepared by me or under the direct supervision and the seal & duly licensed Professional Engineer under the laws of the State of Missouri.

DATE: 8/28/2018 LIC. NO.: 68889

Kimley»Horn
 SRI Consulting Group Inc.
 ENGINEERS PLANNERS & DESIGNERS
 Sambatuk
 www.sambatuk.com
 90% SUBMITTAL

METRO BLUE LINE EXTENSION
 H
 METROPOLITAN TRANSIT AUTHORITY

DRAFT-WORK IN PROCESS

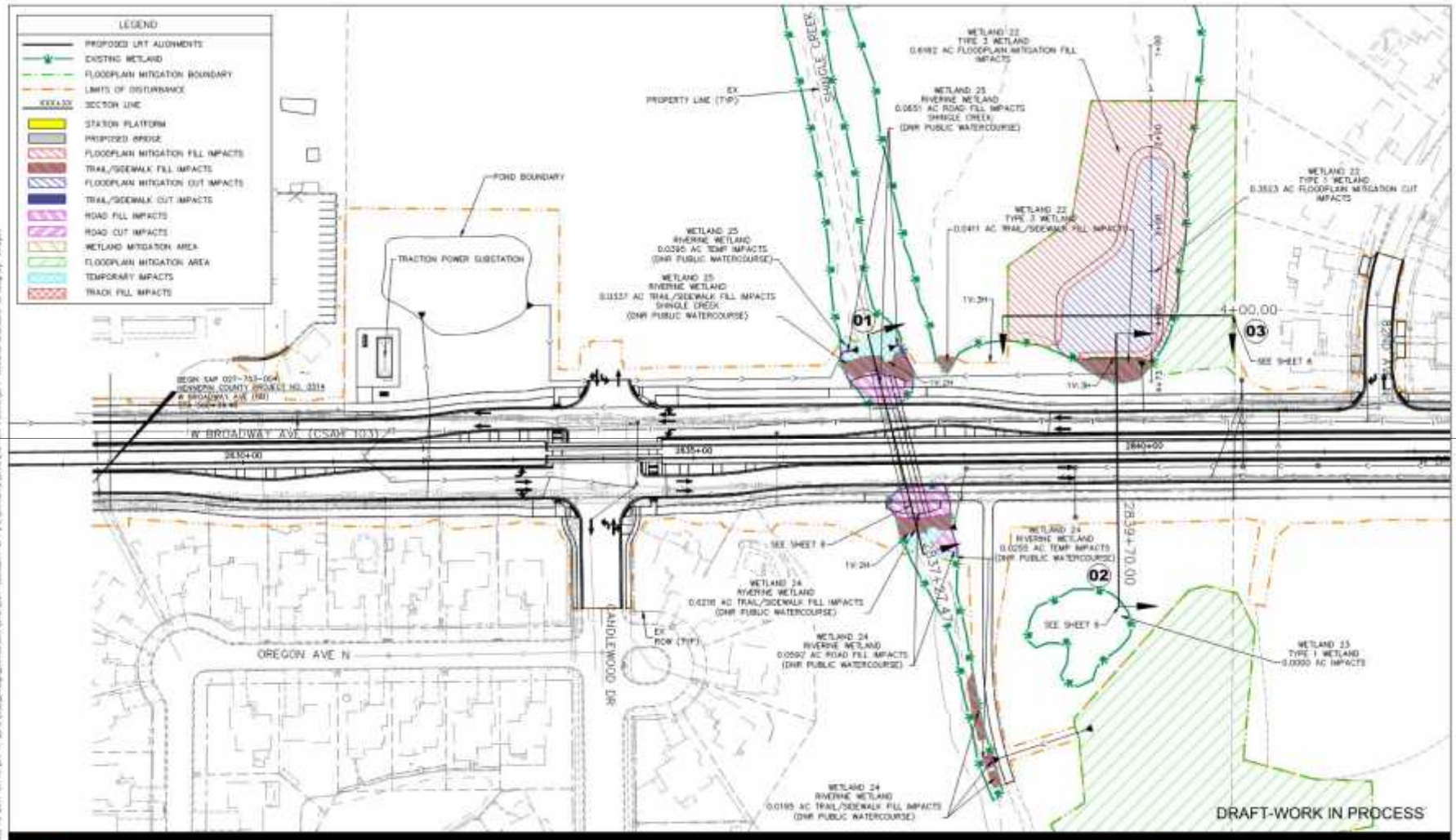
CIVIL 2 CONSTRUCTION - VOLUME 7
DRAINAGE PLAN
W BROADWAY AVE CSAH 103 507+00 - 514+00
RAIL CORRIDOR 2835+00 - 2842+00

DRAINAGE SHEET NAME: BP-STM-PLN-026

SHEET 203 OF 426



Floodplain Impacts & Mitigation: Shingle Creek



File: 12-2017 01 40 14: V:\PROJECTS\Design\Construction\404\001-02\WETLANDS\IMPACTS\WETLANDS.DWG
 User: jguy
 Date: 12/13/2017 10:40:14 AM
 Project: BLUE LINE LRT EXTENSION - SECTION 404 - WETLANDS IMPACTS
 Scale: 1"=40'



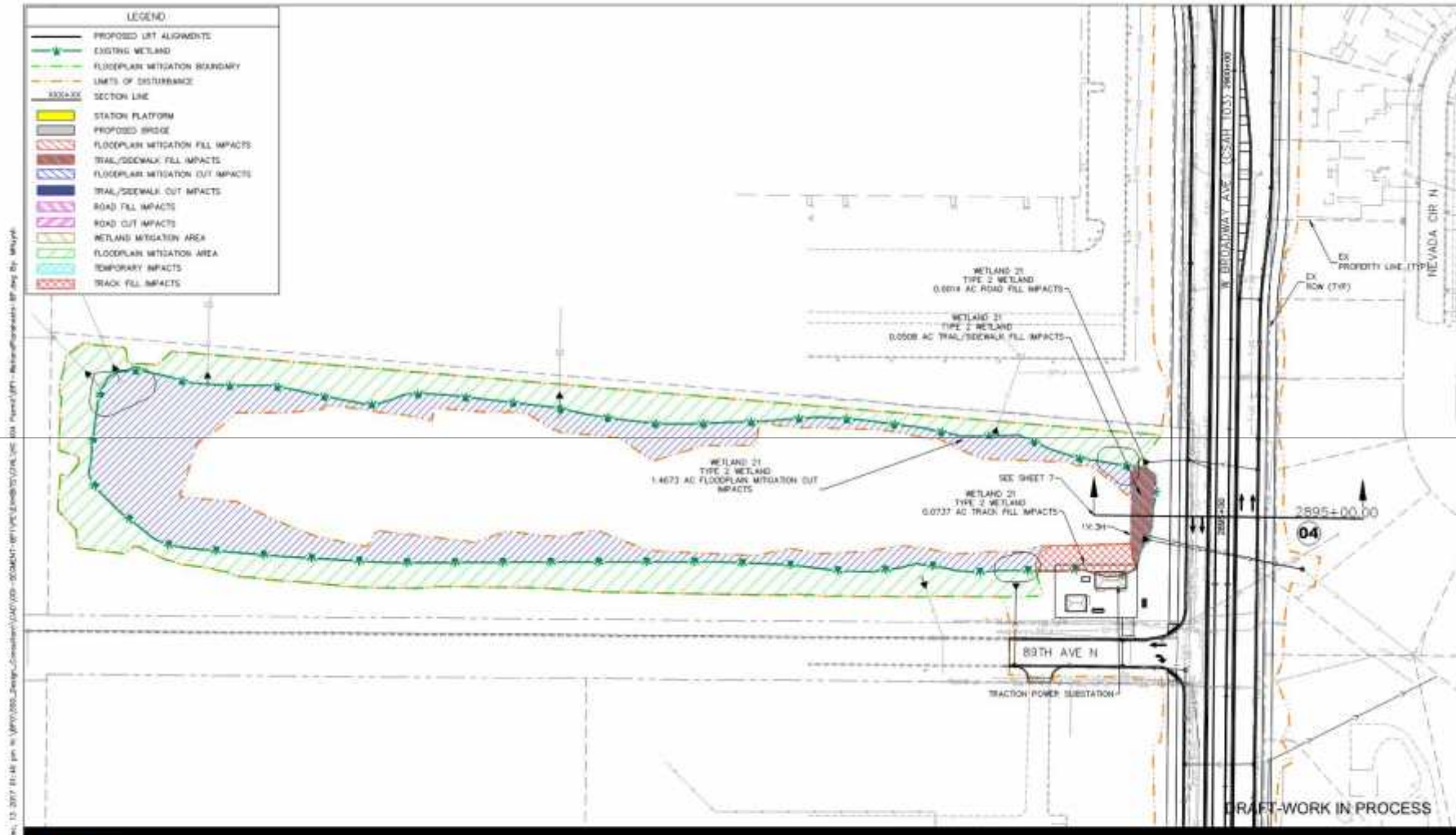
BLUE LINE LRT EXTENSION
SECTION 404
WETLAND IMPACTS - PLAN VIEW

0 25 50 100
DATE: 12/13/2017

2
7



Floodplain Impacts & Mitigation: Seztler



BLUE LINE LRT EXTENSION
SECTION 404
WETLAND IMPACTS - PLAN VIEW



0 25 50 100
DATE: 12/13/2017



North of 610 Stormwater Management



SRI Subarea Study Zones with Conceptual BMPs
 Consulting Group, Inc.
 Brooklyn Park Subarea Stormwater Master Plan
 Brooklyn Park, Minnesota
 0414 | 02104



Community Outreach Coordinators

- Brooklyn Park:
 - Juan Rangel
 - Juan.rangel@metrotransit.org
 - 612-373-5338
- Crystal, Robbinsdale & Golden Valley:
 - David Davies
 - David.davies@metrotransit.org
 - 612-373-5336
- Minneapolis:
 - Sophia Ginis
 - Sophia.ginis@metrotransit.org
 - 612-373-3895




Community Outreach Coordinators

Brooklyn Park	Crystal, Robbinsdale, Golden Valley	Minneapolis
		
Juan Rangel 612-373-5338 Juan.Rangel@metrotransit.org	David Davies 612-373-5336 David.Davies@metrotransit.org	Sophia Ginis 612-373-3895 Sophia.Ginis@metrotransit.org

www.BlueLineExt.org BlueLineExt@metrotransit.org 612-373-5301



More Information



About Us | News & Events | Data & Maps | Publications | Doing Business | Council Meetings | Contact Us | Employment

METRO
COMMUNITIES | PARKS | **TRANSPORTATION** | WASTEWATER & WATER | HOUSING | PLANNING

METRO BLUE LINE EXTENSION

Bottineau Transitway - Minneapolis & Northwestern Communities

The METRO Blue Line Extension (LRT), will operate northwest from downtown Minneapolis through north Minneapolis, Golden Valley, Robbinsdale, Crystal and Brooklyn Park, drawing riders northwest of Brooklyn Park. The proposed alignment is primarily on grade and will have up to 11 new stations in addition to Target Field Station and about 18 miles of double track. The line will interline with the METRO Blue Line and connect Minneapolis and the region's northwest suburbs with existing LRT on the METRO Green Line, future LRT on the METRO Green Line Extension, bus rapid transit on the METRO Red Line, the Northeast Commuter Rail line and local and express bus routes.

Latest News
Met Council can begin designing METRO Blue Line Extension

Route
Click on the map below for more information.

- Route
- Stations
- Environmental
- Timeline
- Project Partners

Website: BlueLineExt.org

Email: BlueLineExt@metrotransit.org

Twitter: [@BlueLineExt](https://twitter.com/BlueLineExt)

