



Fund Balance Updates

**Shingle Creek &
West Mississippi Watershed
Management Commissions
August 8, 2024**





Shingle Creek WMC Summary

Fund	YE 2023	Transfer	Begin 2024	2024 Received	Transfer	YE 2024 Projected
Capital Imp Restricted Account	\$1,709,920	-\$737,704	\$972,216	\$824,165	-\$1,005,162	\$791,219
City Cost Share Account	\$297,944	\$0	\$297,944	\$100,000	\$0	\$397,944
Partnership Cost Share Account	\$108,873	\$0	\$108,873	\$50,000	\$20,000	\$138,873
Closed Projects Account	\$113,490	\$737,704	\$851,195	\$0	-\$475,304	\$375,891
Assigned Funds Account						
• Bass/Pom CLP	\$20,680	\$0	\$20,680	\$0	\$0	\$20,680
• 4 th Gen Plan	\$40,133	\$0	\$40,133	\$0	\$0	\$40,133
Unrestricted Reserve Account	\$248,857	\$0	\$248,857	\$0	Interest	\$248,857+interest

Less Restrictive



Shingle Creek WMC Summary

Less Restrictive

Fund	YE 2023	Transfer	Begin 2024	2024 Received	Transfer	YE 2024 Projected
Capital Imp Restricted Account	\$1,709,920	-\$737,704	\$972,216	\$824,165	-\$1,005,162	\$791,219
City Cost Share Account	\$297,944	\$0	\$297,944	\$100,000	\$0	\$397,944
Partnership Cost Share Account	\$108,873	\$0	\$108,873	\$50,000	\$20,000	\$138,873
Closed Projects Account	\$113,490	\$737,704	\$851,195	\$0	-\$475,304	\$375,891
Assigned Funds Account						
• Bass/Pom CLP	\$20,680	\$0	\$20,680	\$0	\$0	\$20,680
• 4 th Gen Plan	\$40,133	\$0	\$40,133	\$0	\$0	\$40,133
Unrestricted Reserve Account	\$248,857	\$0	\$248,857	\$0	Interest	\$248,857+interest



Shingle Creek WMC Summary

Less Restrictive

Fund	YE 2023	Transfer	Begin 2024	2024 Received	Transfer	YE 2024 Projected
Capital Imp Restricted Account	\$1,709,920	-\$737,704	\$972,216	\$824,165	-\$1,005,162	\$791,219
City Cost Share Account	\$297,944	\$0	\$297,944	\$100,000	\$0	\$397,944
Partnership Cost Share Account	\$108,873	\$0	\$108,873	\$50,000	-\$20,000	\$138,873
Closed Projects Account	\$113,490	\$737,704	\$851,195	\$0	-\$475,304	\$375,891
Assigned Funds Account						
• Bass/Pom CLP	\$20,680	\$0	\$20,680	\$0	\$0	\$20,680
• 4 th Gen Plan	\$40,133	\$0	\$40,133	\$0	\$0	\$40,133
Unrestricted Reserve Account	\$248,857	\$0	\$248,857	\$0	Interest	\$248,857+interest



Shingle Creek WMC Summary

Fund	YE 2023	Transfer	Begin 2024	2024 Received	Transfer	YE 2024 Projected
Capital Imp Restricted Account	\$1,709,920	-\$737,704	\$972,216	\$824,165	-\$1,005,162	\$791,219
City Cost Share Account	\$297,944	\$0	\$297,944	\$100,000	\$0	\$397,944
Partnership Cost Share Account	\$108,873	\$0	\$108,873	\$50,000	\$20,000	\$138,873
Closed Projects Account	\$113,490	\$737,704	\$851,195	\$0	-\$475,304	\$375,891
Assigned Funds Account						
• Bass/Pom CLP	\$20,680	\$0	\$20,680	\$0	\$0	\$20,680
• 4 th Gen Plan	\$40,133	\$0	\$40,133	\$0	\$0	\$40,133
Unrestricted Reserve Account	\$248,857	\$0	\$248,857	\$0	Interest	\$248,857+interest

Less Restrictive



Shingle Creek WMC Summary

Fund	YE 2023	Transfer	Begin 2024	2024 Received	Transfer	YE 2024 Projected
Capital Imp Restricted Account	\$1,709,920	-\$737,704	\$972,216	\$824,165	-\$1,005,162	\$791,219
City Cost Share Account	\$297,944	\$0	\$297,944	\$100,000	\$0	\$397,944
Partnership Cost Share Account	\$108,873	\$0	\$108,873	\$50,000	\$20,000	\$138,873
Closed Projects Account	\$113,490	\$737,704	\$851,195	\$0	-\$475,304	\$375,891
Assigned Funds Account						
• Bass/Pom CLP	\$20,680	\$0	\$20,680	\$0	\$0	\$20,680
• 4 th Gen Plan	\$40,133	\$0	\$40,133	\$0	\$0	\$40,133
Unrestricted Reserve Account	\$248,857	\$0	\$248,857	\$0	Interest	\$248,857+interest

Less Restrictive



Shingle Creek WMC Summary

Fund	YE 2023	Transfer	Begin 2024	2024 Received	Transfer	YE 2024 Projected
Capital Imp Restricted Account	\$1,709,920	-\$737,704	\$972,216	\$824,165	-\$1,005,162	\$791,219
City Cost Share Account	\$297,944	\$0	\$297,944	\$100,000	\$0	\$397,944
Partnership Cost Share Account	\$108,873	\$0	\$108,873	\$50,000	\$20,000	\$138,873
Closed Projects Account	\$113,490	\$737,704	\$851,195	\$0	-\$475,304	\$375,891
Assigned Funds Account						
• Bass/Pom CLP	\$20,680	\$0	\$20,680	\$0	\$0	\$20,680
• 4 th Gen Plan	\$40,133	\$0	\$40,133	\$0	\$0	\$40,133
Unrestricted Reserve Account	\$248,857	\$0	\$248,857	\$0	Interest	\$248,857+interest

Less Restrictive



West Mississippi WMC Summary

Fund	YE 2023	Transfer	Begin 2024	2024 Received	Transfer	YE 2024 Projected
Capital Imp Restricted Account	\$0	\$0	\$0	\$0	\$0	\$0
City Cost Share Account	\$462,747	\$0	\$462,747	\$50,000	\$0	\$512,747
Partnership Cost Share Account	\$134,813	\$0	\$134,813	\$100,000	\$0	\$234,813
Closed Projects Account	\$151,306	\$0	\$151,306	\$0	\$0	\$151,306
Assigned Funds Account						
• SWAs	\$40,000	\$0	\$40,000	\$0	\$0	\$40,000
• Flood Model	\$25,000	\$0	\$25,000	\$0	\$0	\$25,000
• Grant Match	\$89,320	\$0	\$89,320	\$0	\$0	\$89,320
Unrestricted Reserve Account	\$162,276	\$0	\$162,276	\$0	Interest	\$162,276+interest

Less Restrictive



West Mississippi WMC Summary

Fund	YE 2023	Transfer	Begin 2024	2024 Received	Transfer	YE 2024 Projected
Capital Imp Restricted Account	\$0	\$0	\$0	\$0	\$0	\$0
City Cost Share Account	\$462,747	\$0	\$462,747	\$50,000	\$0	\$512,747
Partnership Cost Share Account	\$134,813	\$0	\$134,813	\$100,000	\$0	\$234,813
Closed Projects Account	\$151,306	\$0	\$151,306	\$0	\$0	\$151,306
Assigned Funds Account						
• SWAs	\$40,000	\$0	\$40,000	\$0	\$0	\$40,000
• Flood Model	\$25,000	\$0	\$25,000	\$0	\$0	\$25,000
• Grant Match	\$89,320	\$0	\$89,320	\$0	\$0	\$89,320
Unrestricted Reserve Account	\$162,276	\$0	\$162,276	\$0	Interest	\$162,276+interest

Less Restrictive



West Mississippi WMC Summary

Fund	YE 2023	Transfer	Begin 2024	2024 Received	Transfer	YE 2024 Projected
Capital Imp Restricted Account	\$0	\$0	\$0	\$0	\$0	\$0
City Cost Share Account	\$462,747	\$0	\$462,747	\$50,000	\$0	\$512,747
Partnership Cost Share Account	\$134,813	\$0	\$134,813	\$100,000	\$0	\$234,813
Closed Projects Account	\$151,306	\$0	\$151,306	\$0	\$0	\$151,306
Assigned Funds Account						
• SWAs	\$40,000	\$0	\$40,000	\$0	\$0	\$40,000
• Flood Model	\$25,000	\$0	\$25,000	\$0	\$0	\$25,000
• Grant Match	\$89,320	\$0	\$89,320	\$0	\$0	\$89,320
Unrestricted Reserve Account	\$162,276	\$0	\$162,276	\$0	Interest	\$162,276+interest

Less Restrictive



West Mississippi WMC Summary

Fund	YE 2023	Transfer	Begin 2024	2024 Received	Transfer	YE 2024 Projected
Capital Imp Restricted Account	\$0	\$0	\$0	\$0	\$0	\$0
City Cost Share Account	\$462,747	\$0	\$462,747	\$50,000	\$0	\$512,747
Partnership Cost Share Account	\$134,813	\$0	\$134,813	\$100,000	\$0	\$234,813
Closed Projects Account	\$151,306	\$0	\$151,306	\$0	\$0	\$151,306
Assigned Funds Account						
• SWAs	\$40,000	\$0	\$40,000	\$0	\$0	\$40,000
• Flood Model	\$25,000	\$0	\$25,000	\$0	\$0	\$25,000
• Grant Match	\$89,320	\$0	\$89,320	\$0	\$0	\$89,320
Unrestricted Reserve Account	\$162,276	\$0	\$162,276	\$0	Interest	\$162,276+interest

Less Restrictive



West Mississippi WMC Summary

Fund	YE 2023	Transfer	Begin 2024	2024 Received	Transfer	YE 2024 Projected
Capital Imp Restricted Account	\$0	\$0	\$0	\$0	\$0	\$0
City Cost Share Account	\$462,747	\$0	\$462,747	\$50,000	\$0	\$512,747
Partnership Cost Share Account	\$134,813	\$0	\$134,813	\$100,000	\$0	\$234,813
Closed Projects Account	\$151,306	\$0	\$151,306	\$0	\$0	\$151,306
Assigned Funds Account						
• SWAs	\$40,000	\$0	\$40,000	\$0	\$0	\$40,000
• Flood Model	\$25,000	\$0	\$25,000	\$0	\$0	\$25,000
• Grant Match	\$89,320	\$0	\$89,320	\$0	\$0	\$89,320
Unrestricted Reserve Account	\$162,276	\$0	\$162,276	\$0	Interest	\$162,276+interest

Less Restrictive



West Mississippi WMC Summary

Fund	YE 2023	Transfer	Begin 2024	2024 Received	Transfer	YE 2024 Projected
Capital Imp Restricted Account	\$0	\$0	\$0	\$0	\$0	\$0
City Cost Share Account	\$462,747	\$0	\$462,747	\$50,000	\$0	\$512,747
Partnership Cost Share Account	\$134,813	\$0	\$134,813	\$100,000	\$0	\$234,813
Closed Projects Account	\$151,306	\$0	\$151,306	\$0	\$0	\$151,306
Assigned Funds Account						
• SWAs	\$40,000	\$0	\$40,000	\$0	\$0	\$40,000
• Flood Model	\$25,000	\$0	\$25,000	\$0	\$0	\$25,000
• Grant Match	\$89,320	\$0	\$89,320	\$0	\$0	\$89,320
Unrestricted Reserve Account	\$162,276	\$0	\$162,276	\$0	Interest	\$162,276+interest

Less Restrictive



Thank you

Cumulative Impacts Rule Overview

**Shingle Creek &
West Mississippi Watershed
Management Commissions
August 8, 2024**



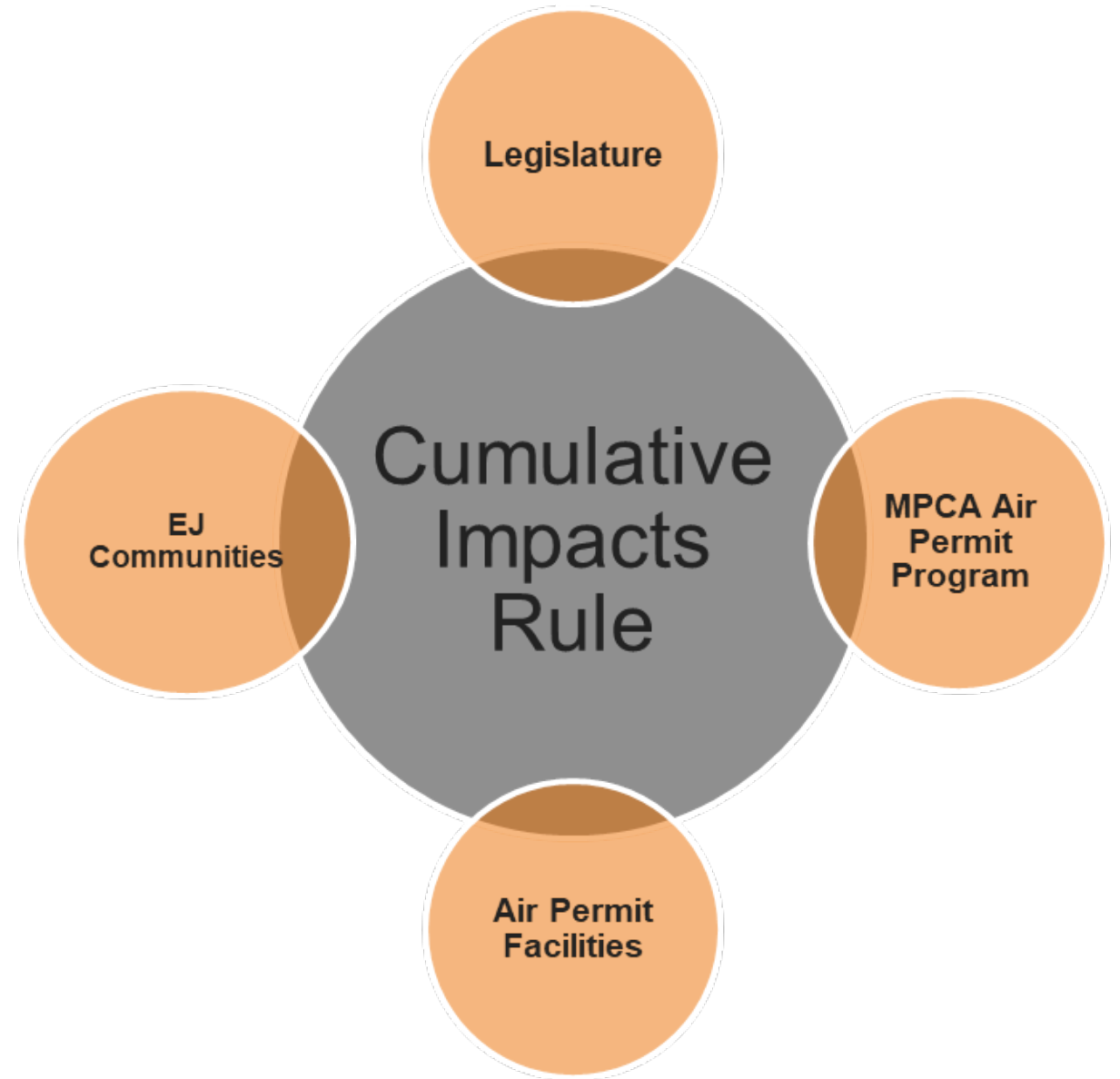
Living near air pollution



Your likelihood of living near a facility that emits pollution at a level above health guidelines is higher if you are a person of color, Indigenous, or lower income.

Rule Applicability & Purpose

- 2023: the Minnesota Legislature directed the MPCA to develop and implement the Cumulative Impacts Rule.
- Affects MPCA's **air permitting process** in defined Environmental Justice Areas in the 7-county metro, Rochester, and Duluth
- Applies to facilities with new, expanded, or reissued air permits that are located within one mile of the designated environmental justice areas
- Expected to affect ~120 facilities such as landfills, power plants, refineries, and manufacturing plants.
- **Intended Purpose:** to help inform air permitting decisions and better protect health of those in the community.
- Fall 2026: MPCA expects to begin implementation

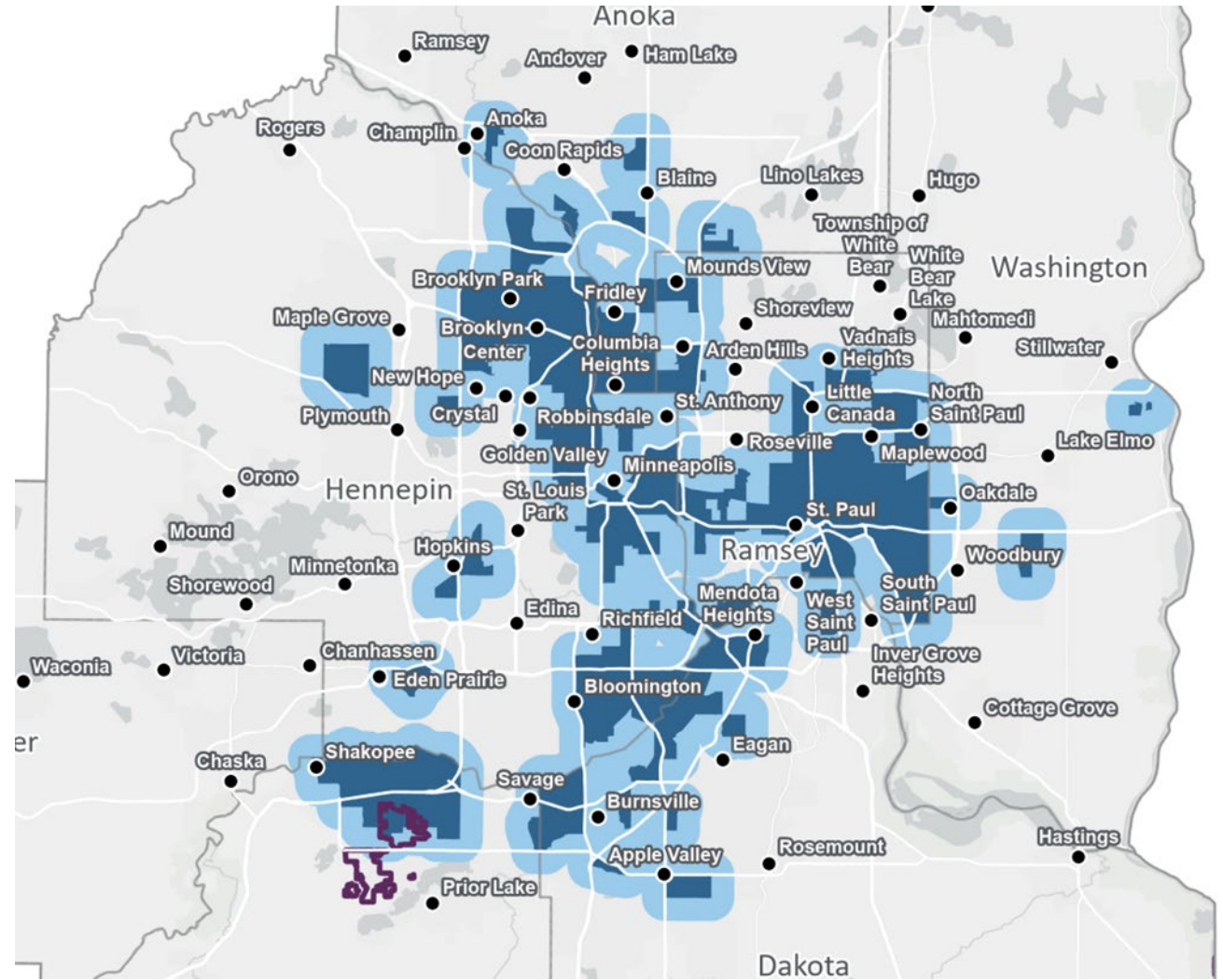


Metro Area – Environmental Justice Areas

EJ communities = Historically underserved communities that experience a disproportionate pollution burden.

Established based on criteria in the legislation

- Race
- Income
- English Proficiency
- Tribal Areas



Schedule

- Legislation laid out the general process for implementing the Rule, including who & where it applies.
- However, MPCA must establish many of the key implementation details through Rulemaking, including:
 - when a cumulative impacts analysis is required (triggered),
 - what's included in the analysis,
 - when the analysis shows substantial impacts
 - details of the community benefit agreements



Public Input

- MPCA has been conducting a series of public meetings & working sessions to collect public input for developing details of the rule.
- Next public working session: August 14 in Duluth – Community Benefit Agreements



August 14, 2024, 5:30 - 7:30 p.m. | Public meeting

Cumulative impacts working session: Community benefit agreements

Location: Lincoln Park Middle School cafeteria

- On MPCA's cumulative impacts webpage, you can subscribe for updates about this rule (including when additional public meetings will occur)



Stay connected

Sign up for updates about the cumulative impacts rulemaking process and opportunities for public input.

Subscribe

Thank you



Shingle Creek Crossing Pollutant Loading Evaluation

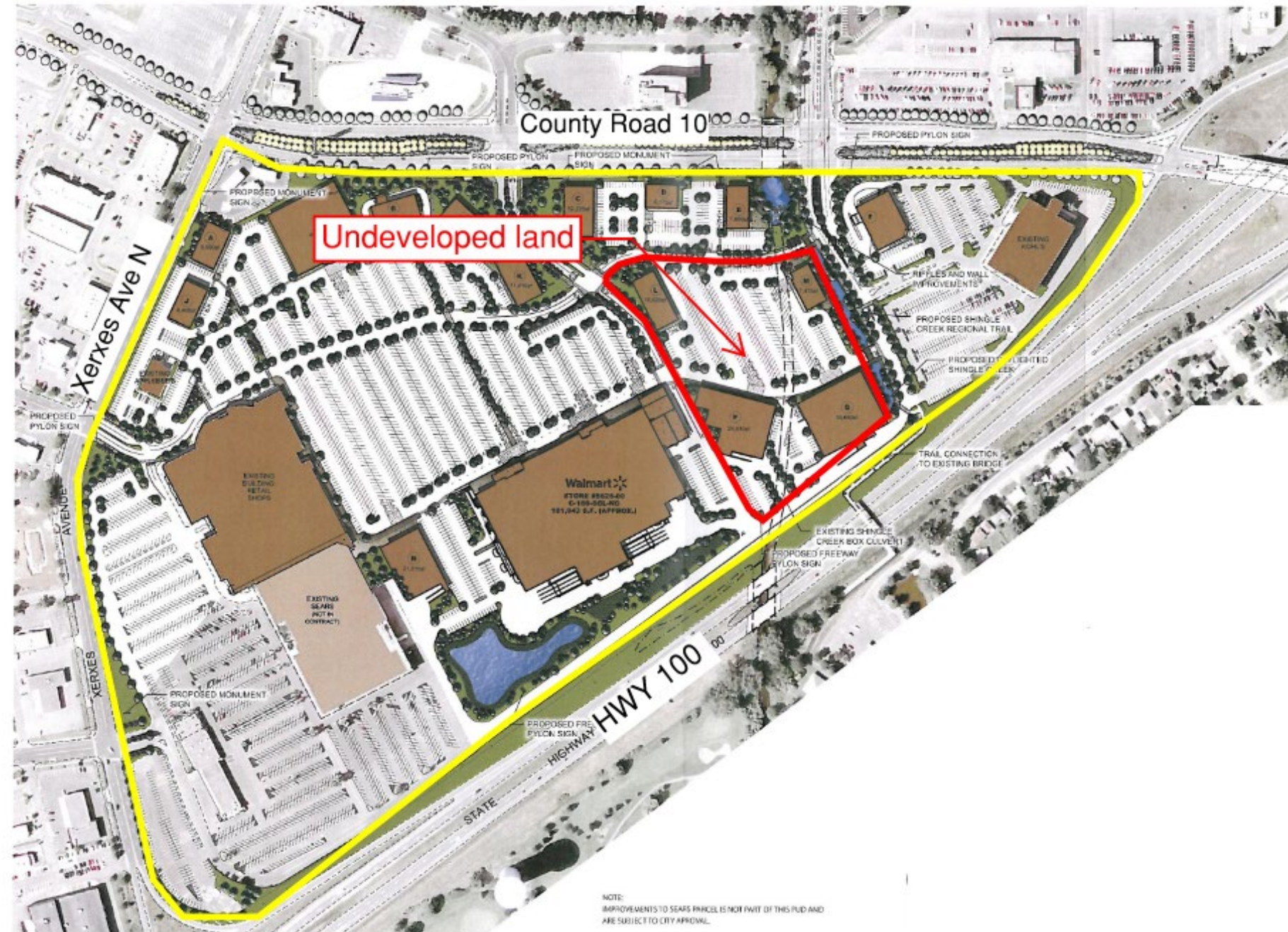
Shingle Creek &
West Mississippi Watershed
Management Commissions
August 8, 2024





Introduction

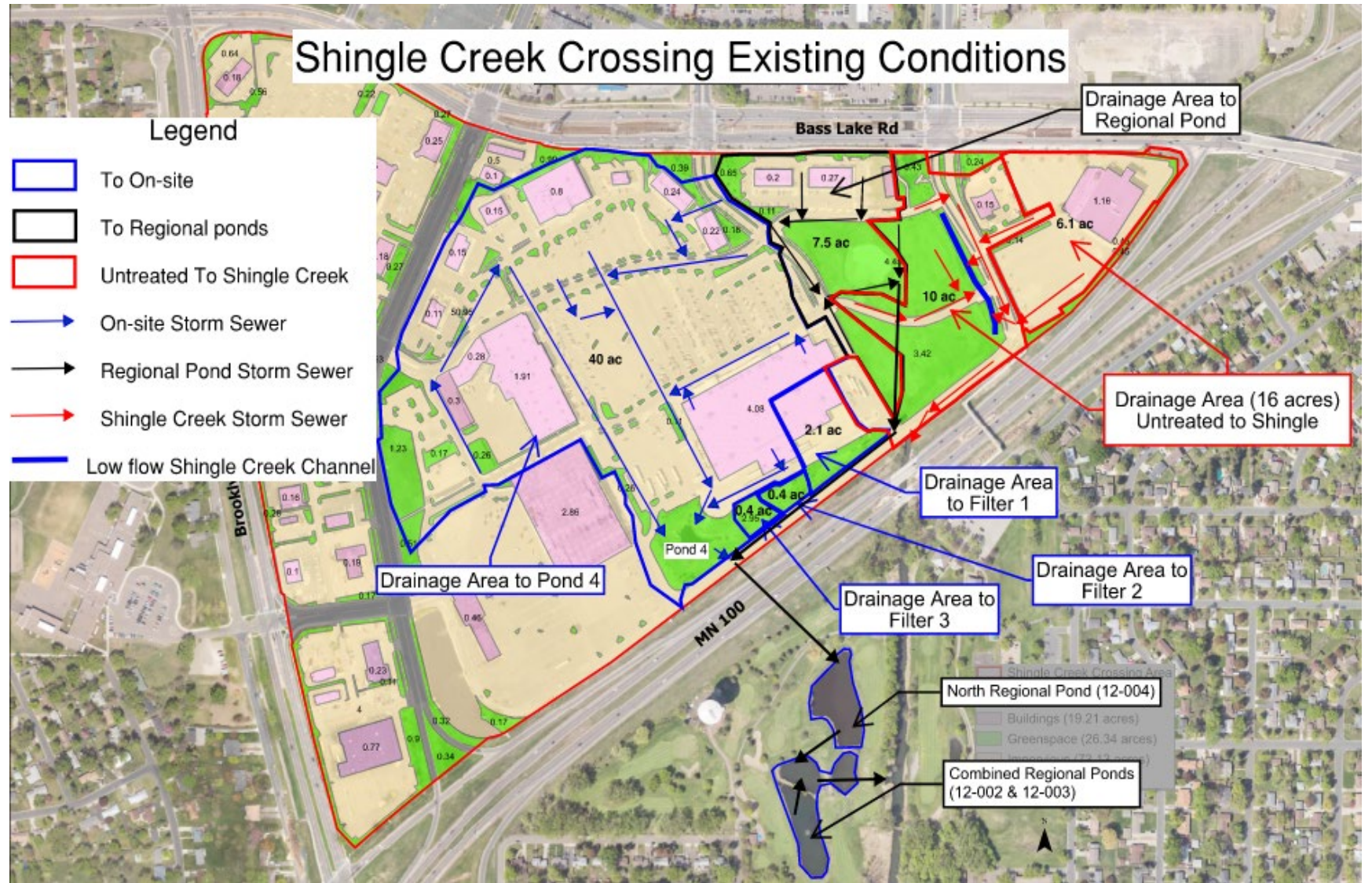
- 2011 & 2012 project reviews
- Full development hasn't occurred
- Potential "land swap"
- City requested assistance to better understand redevelopment parameters





Existing Conditions

- 3 filtration basins, 1 pond
- Pond provides most TP removal
- Pond drains to Centerbrook Regional Ponds for additional treatment

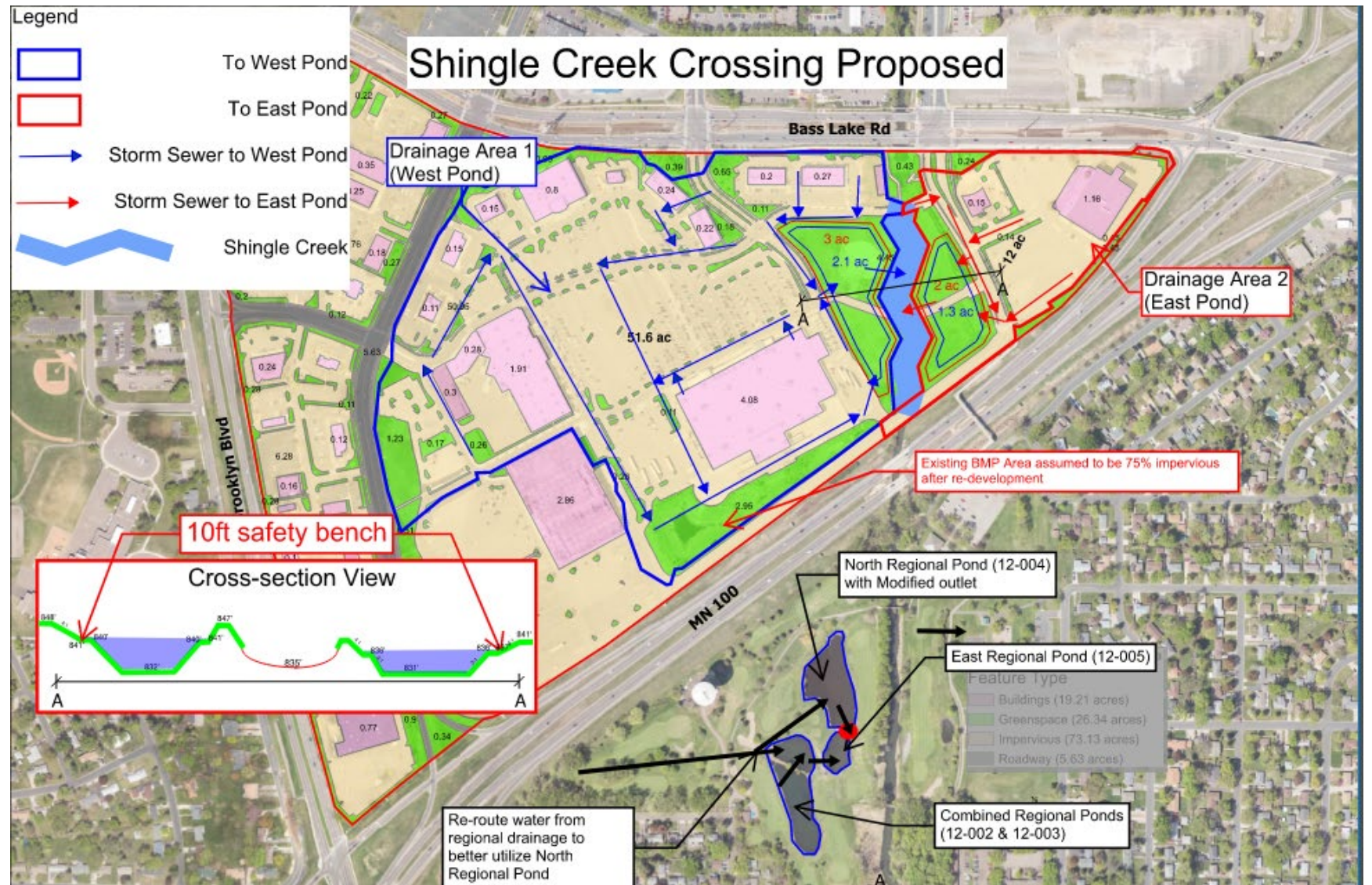


SC Crossing TP Removal (lbs./yr.)	Regional Pond TP Removal (lbs./yr.)	Load to Shingle Creek from SC Crossing and Regional Ponds (lbs./yr.)
29	29	333



Proposed Conditions

- Stormwater standards
 - Infiltrate 1.1"
 - No infiltration, so no increase in TP & TSS
- Proposed
 - Daylight Shingle Creek
 - Replace pond+filtration basins with two ponds
- Further study
 - "Normal" water elevation for daylighted portion of creek
 - Adequate pipe slope



SC Crossing TP Removal (lbs./yr.)	Regional Pond TP Removal (lbs./yr.)	Load to Shingle Creek from SC Crossing and Regional Ponds (lbs./yr.)
73	30	259