

3235 Fernbrook Lane N • Plymouth, MN 55447
 Tel: 763.553.1144 • Fax: 763.553.9326
 Email: judie@jass.biz • Website: www.shinglecreek.org

December 7, 2023

Commissioners **and**
 Technical Advisory Committee Members
 Shingle Creek and West Mississippi
 Watershed Management Commissions
 Hennepin County, Minnesota

*The agenda and meeting packets are available on
 the Commission's web site.*
<http://www.shinglecreek.org/minutes--meeting-packets.html> **and**
<http://www.shinglecreek.org/tac-meetings.html>

Dear Commissioners and Members:

Regular meetings of the Shingle Creek and West Mississippi Watershed Management Commissions will be held Thursday, December 14, 2023, at Plymouth Community Center, 14800 34th Avenue North, Plymouth, MN.

Lunch will be served at 12:00 noon and the meetings will convene concurrently at 12:45.

The Technical Advisory Committee (TAC) will meet prior to the regular meeting, at 11:15.

Please make your meal choice from all of the items below and email me at judie@jass.biz to confirm your attendance and your meal selection by **noon, Tuesday, December 12, 2023**. Thank you.

Regards,

Judie A. Anderson
 Administrator

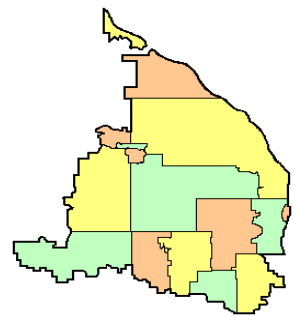
cc: Alternate Commissioners Member Cites Troy Gilchrist TAC Members
 Stantec Consulting Services BWSR MPCA HCEE

Z:\Shingle Creek\Meetings\Meetings 2023\12 Meeting Notice.docx

Order your deli sandwich box lunch. Sandwiches come with lettuce, tomato and mayo. As an alternative you may specify your sandwich with wheat bread or as an unwich (lettuce wrapped).

1 Pepe – Ham and cheese	2 Big John – Roast beef
3 Totally Tuna – Tuna salad and cucumber	4 Turkey Tom – Turkey
5 Vito – salami, capocollo, cheese, onion, oil and vinegar, oregano-basil (no mayo)	
6 The Veggie – double cheese, avocado spread, cucumber	
14 Bootlegger Club – Roast beef and turkey	

**Please also indicate: your cookie preference: Chocolate Chip or Oatmeal Raisin
 and your beverage preference: (W) Water (C) Coke (DC) Diet Coke (S) Sprite (N) None**



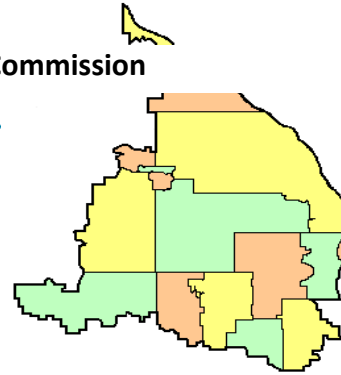
3235 Fernbrook Lane N • Plymouth, MN 55447
 Tel: 763.553.1144 • Fax: 763.553.9326
 Email: judie@jass.biz • Website: www.shinglecreek.org

A combined regular meeting of the Shingle Creek (SC) and West Mississippi (WM) Watershed Management Commissions will be convened Thursday, December 14, 2023, at 12:45 p.m. Agenda items are available at <http://www.shinglecreek.org/minutes--meeting-packets.html>. *Black typeface denotes SCWM items, blue denotes SC items, green denotes WM items.*

A G E N D A
December 14, 2023

- 1. Call to Order.**
 - SCWM a. Roll Call.
 - √ SCWM b. Approve Agenda.*
 - √ SCWM c. Approve Minutes of Last Meeting.*
- 2. Reports.**
 - √ SC a. Treasurer’s Report and Claims** - voice vote.
 - √ WM b. Treasurer’s Report and Claims** - voice vote.
- SCWM **3. Open forum.**
- 4. Project Reviews.**
 - √ SC a. SC2023-08 Twin Creek Culverts at Zane Avenue, Brooklyn Park.*
- 5. Water Quality.**
 - √ SC a. Reimbursement Authorization.
 - 1) Connections II.*
 - 2) Bass Creek.*
 - √ SC b. France Avenue Carp Barrier Removal.*
- √ SC **6. Grant Opportunities.**
 - a. MPCA Resilience Grant Review and Approval.**
- 7. Education and Public Outreach.**
 - SCWM a. Update.**
 - SCWM b. Next WMWA meeting – via zoom. 8:30 a.m., Tuesday, January 9, 2024.
- SCWM **8. Communications.**
 - SCWM a. Communications Log.*
 - SCWM b. Staff Report.*
 - 1) Highway 252/94 EIS Review.*
 - 2) Blue Line LRT.
 - 3) Meadow Lake.
 - 4) Crystal Lake.
 - 5) Eagle Lake SWA.
 - 6) SC Brookdale Park Remeander,
 - 7) Miss. Bank Stab. Feas. Study.
 - 8) Grant project status.
- 9. Other Business.**
 - √ SCWM a. 2023 Annual Progress Review.*
 - √ SCWM b. 2024 Work Plan – discussion.*
- SCWM **10. Adjournment.**

Z:\Shingle Creek\Meetings\Meetings 2023\12 Regular meeting agenda.docx
 * In meeting packet or emailed ** Supplemental email / Available at meeting
 Previously transmitted * Available on website √ Item requires action



REGULAR MEETING MINUTES
November 9, 2023

(Action by the SCWMC appears in blue, by the WMWMC in green and shared information in black.
 *indicates items included in the meeting packet.)

I. A joint meeting of the Shingle Creek Watershed Management Commission and the West Mississippi Watershed Management Commission was called to order by Shingle Creek Chairman Andy Polzin at 12:46 p.m. on Thursday, November 9, 2023, at Plymouth Community Center, 14800 34th Avenue North, Plymouth, MN.

Present for Shingle Creek: David Mulla, Brooklyn Center; Randy Bergstrom, Crystal; Karen Jaeger, Maple Grove; Ray Schoch, Minneapolis; Bob Grant, New Hope; John Roach, Osseo; Andy Polzin, Plymouth; and Wendy Scherer, Robbinsdale. Not represented: Brooklyn Park.

Present for West Mississippi: David Mulla, Brooklyn Center; Melissa Collins, Brooklyn Park; Karen Jaeger, Maple Grove; and John Roach, Osseo. Not represented: Champlin.

Also present were: James Soltis, Brooklyn Center; Mitch Robinson, Brooklyn Park; Heather Nelson, Champlin; Mark Ray and Ben Perkey, Crystal; Derek Asche, Maple Grove; Nick Macklem, New Hope; James Kelly, Osseo; Amy Riegel, Plymouth; Richard McCoy, Robbinsdale; Todd Shoemaker and Katie Kemmitt, Stantec; Troy Gilchrist, Kennedy & Graven; and Judie Anderson, JASS.

II. **AGENDAS AND MINUTES.**

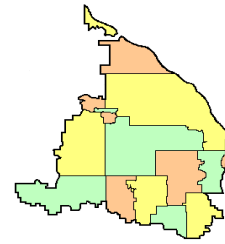
Motion by Schoch, second by Grant to approve the **Shingle Creek agenda**.* *Motion carried unanimously.*

Motion by Roach, second by Jaeger to approve the **West Mississippi agenda**.* *Motion carried unanimously.*

Motion by Schoch, second by Jaeger to approve the **minutes* of the October 12, 2023, regular meeting**. *Motion carried unanimously.*

Motion by Collins, Second by Roach to approve the **minutes* of the October 12, 2023, regular meeting** with the following amendment to Item VI.B:

Further, during their review, the Commissioners noted the site's proximity to the Elm Creek Park Reserve and encourage City staff to work with the applicant to ensure that Minnesota's Endangered and Threatened Species law is followed. ~~other natural resources/endangered species approvals/protections (i.e., northern long-eared bat, Blandings turtle, rusty patch bumblebee) are in place.~~



Motion carried unanimously.

III. FINANCES AND REPORTS.

A. Motion by Schoch, second by Jaeger to approve the Shingle Creek **November Treasurer's Report* and claims** totaling \$53,960.59. Voting aye: Mulla, Bergstrom, Jaeger, Schoch, Grant, Roach, Polzin, and Scherer; voting nay: none; absent: Brooklyn Park.

B. Motion by Roach, second by Collins to approve the **West Mississippi November Treasurer's Report* and claims** totaling \$14,664.72. Voting aye: Mulla, Collins, Jaeger, and Roach; voting nay: none; absent: Champlin.

IV. OPEN FORUM.

V. OLD BUSINESS.

VI. NEW BUSINESS.

VII. WATER QUALITY.

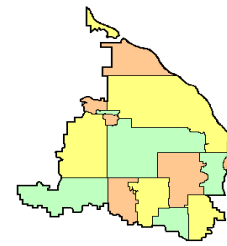
A. Eagle Lake Subwatershed Assessment (SWA). The goal of the Eagle Lake Subwatershed Assessment is to evaluate stormwater management and in-lake management options to address excess phosphorus impacting Eagle Lake's water quality. In this project Staff seeks to:

1. Identify and prioritize potential stormwater management practices to reduce phosphorus and sediment loading in the Eagle Lake subwatershed, and
2. Evaluate sediment phosphorus and aquatic vegetation within Eagle and Pike Lakes to determine appropriate in-lake treatment practices to reduce internal loading.

Based on the 2019 5-year TMDL update, efforts to restore water quality in Eagle Lake will require improvements in loading from the watershed, from upstream lakes, and from in-lake sediments. Staff's October 28, 2023, memo* summarizes watershed load reductions to Eagle Lake. Internal phosphorus loads and potential internal load reductions for Eagle Lake and Pike Lake were discussed at the Commission's August meeting.

The Eagle Lake TMDL specifies that phosphorus loads need to be reduced by 202 lbs/yr total from all sources to Eagle Lake. The internal loading sediment analysis for this project estimated a 164 lbs/yr reduction with aluminum sulfate (alum) treatment in Eagle Lake, leaving an additional 38 lbs/yr reduction from external sources in order to meet the TMDL goals and attain water quality standards. The TMDL assumes that upstream lakes already meet water quality goals. Therefore, this would likely require implementation of at least two watershed projects to meet the needed reductions.

Staff evaluated existing total phosphorus loading rates to Eagle Lake and identified 30 locations for potential projects. These initial projects were reduced to seven sites for prioritization based on location on public land, suitable soils for infiltration, and feasibility given local conditions and infrastructure. The projects include infiltration, stormwater collection and reuse for irrigation, iron-enhanced sand amendments to existing basins, and manufactured treatment devices. City staff reviewed the options and agreed with the recommended project selection.



The seven potential projects were evaluated and prioritized through a ranking system using estimated TP reduction, initial project cost, and lifecycle cost. The two top ranked projects are an infiltration basin in Eagle Woods Park (ID#1) and an iron-enhanced sand filter bench retrofit and pond expansion in an existing stormwater basin at Hemlock Lane and East Fish Lake Road (ID#5)

	<u>Eagle Woods Park</u>	<u>Hemlock Lane</u>
TP reduction	21.8 lbs/yr	9.3 lbs/yr
Construction cost	\$470,000	\$218,000
30-year lifecycle cost	\$498,000	\$255,000
Lifecycle	\$761 per lb TP/yr	\$886 per lb TP/yr

Motion by Schoch, second by Jaeger directing Staff to move forward with 30% design for the infiltration facility in Eagle Woods Park contingent on positive public input. Lacking positive input, Staff are directed to proceed with the Hemlock Lane project. *Motion carried unanimously.*

B. Gaulke Pond Subwatershed Assessment (SWA). The Commission requested Stantec to evaluate opportunities to reduce stormwater runoff volume to Gaulke Pond. At the August meeting, the final eleven best management practices (BMPs) were presented. Opportunity A2, the Colorado Avenue Infiltration Trench, was selected by the Commission as the preferred alternative and Stantec was authorized to proceed with development of 30% design plans. The plans attached to Staff’s November 2, 2023, memo* show the potential BMP layout within the Colorado Avenue right-of-way and associated details. The design provided is a three-sided 6- by 6-foot concrete box culvert, however, a bid alternative using corrugated polypropylene (PP) pipe chambers, similar to the ADS StormTech chambers installed on Kentucky Avenue is also included. If PP chambers are acceptable to the City of Crystal public works staff, this may offer an opportunity to reduce overall implementation costs.

Additionally, the design to date has relied on Minnesota Department of Natural Resources LiDAR topography, City GIS data, and generalized soils information. If the Commission chooses to proceed with 60% design, while out of scope, Staff recommend collecting detailed topography and utility information, as well as completing a more thorough geotechnical evaluation of the underlying soils to confirm stability of the nearby city reservoir.

Motion by Schoch, second by Grant to accept the 30% design plans and direct Staff to proceed with the feasibility study. *Motion carried unanimously.*

VIII. GRANT OPPORTUNITIES.

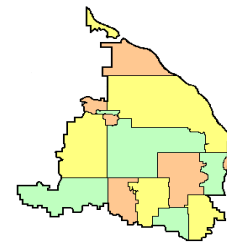
IX. EDUCATION AND PUBLIC OUTREACH.

The **West Metro Water Alliance (WMWA)** will meet via Zoom at 8:30 a.m., November 14, 2023.

X. COMMUNICATIONS.

A. November Communications Log.* No items required action.

B. November Staff Report.*



1. Highways 252/94 EIS Review. The Federal Highway Administration (FHWA) and Minnesota Department of Transportation (MnDOT) released the Final Scoping Decision Document (SDD) to Participating Agencies on October 2, 2023. MnDOT hosted virtual Cooperating and Participating Agency Meeting #10 on October 12 and Policy Advisory Committee Meeting #11 on October 25. MnDOT received over 500 comments during the 60-day public review period of the Draft SDD, responded to all public and agency comments received, and grouped the comments into nine overarching themes: Alternatives, Air Quality, Environmental Justice, Equity and Health Assessment Recommendations, Property Impacts, Purpose and Need, Traffic Noise, Safety, and Transit. Stantec attended both meetings and will reconvene the 252/94 EIS Review Subgroup within the next two weeks to discuss the SDD document, MnDOT responses, and next steps.

2. Crystal Lake Management Plan. Staff are working with Minnesota Pollution Control Agency (MPCA) to extend the 319 Grant through the early part of 2024 to allow the Commission to spend the rest of the grant match requirement (\$32,900). Sediment cores were collected in early October to assess alum treatment success. Preliminary results show phosphorus release rates have been significantly reduced.

3. Meadow Lake Drawdown. Staff have extended the Meadow Lake Clean Water Fund Projects and Practices grant through the end of 2024, one year longer than originally planned. The grant extension will allow the Commission to spend more grant funds on monitoring and adaptive management. Staff collected post-alum treatment sediment cores on October 4 to evaluate the impact of the alum treatment on sediment phosphorus release rate. Preliminary results show sediment phosphorus release rates have been significantly reduced. Staff have also been collecting water quality data in September and October to supplement CAMP volunteer water quality monitoring.

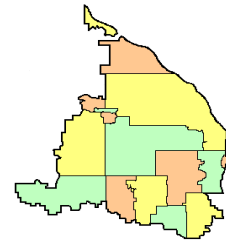
4. Eagle Lake Subwatershed Assessment. See item VII.A., above.

5. Gaulke Pond Subwatershed Assessment. See item VII.B., above.

6. Shingle Creek Brookdale Park Remeander. Stantec has modified the concept plan based on community input and City and stakeholder comments. The revised concept will be reviewed by the City of Brooklyn Park and discussed for further direction. Stantec and the City anticipate presenting this modified concept alternative to the community prior to progressing the project's preliminary design plans. The date of the next public meeting will be determined in November.

7. Shingle Creek Trail Bank Stabilization and Fish Access Improvements. Stantec has modified the concept plan based on community input and City and stakeholder comments. The revised concept will be reviewed by City of Brooklyn Park and discussed for further direction. Stantec and the City anticipate presenting this modified concept alternative to the community prior to progressing the project's preliminary design plans. The date of the next public meeting will be determined in November.

8. Mississippi Riverbank Stabilization Feasibility Study. City of Brooklyn Park and Hennepin County staff are contacting residents to gauge interest in additional study. From those that are interested, Staff will select 5-6 properties to visit and evaluate erosion and potential solutions. Selected properties will be surveyed this fall.



9. An addendum to the Staff Report includes an update of the financial status of the grant and cost-share projects currently in progress.

C. **Hennepin County Green Notes.*** Describes other programs being sponsored or promoted by the County.

XI. **OTHER BUSINESS.**

A. This is **Mark Ray's** last Shingle Creek meeting. Effective December 1, 2023, he will be employed by the City of Burnsville.

B. There being no further business before the Commissions, the joint meeting was adjourned at 1:43 p.m.

Respectfully submitted,

A handwritten signature in black ink that reads "Judie A. Anderson".

Judie A. Anderson
Recording Secretary
JAA:tim

Z:\Shingle Creek\Meetings\Meetings 2023\November 9, 2023 Meeting_Minutes.docx

SHINGLE CREEK WATERSHED MANAGEMENT COMMISSION**PROJECT REVIEW SC2023-08:** Twin Creek Culverts at Zane Avenue

Owner: Mitch Robinson
Company: City of Brooklyn Park
Address: 5200 8th Ave N Brooklyn Park, MN 55443

Engineer: Craig Runnakko
Company: City of Brooklyn Park
Address: 5200 85th Ave N Brooklyn Park, MN 55443
Phone: 763-493-8109
Email: craig.runnakko@brooklynpark.org

Purpose: Trail construction and culvert repair and maintenance along Zane Ave on 2.2 acres.

Location: Zane Ave from Brooklyn Blvd to 63rd Ave (Figure 1).

- Exhibits:**
1. Project review application, by City of Brooklyn Park, received 11/30/23.
 2. Watershed Plans Submittal (Sheets 1, 22, 23, 24, 25, and 32 of 166) (Figure 2), by City of Brooklyn Park, dated 11/08/23, received 11/30/23.
 3. Technical Memo (hydraulic calculations) by the City of Brooklyn Park, dated 8/18/23, received 11/30/23.

- Findings:**
1. The proposed linear project is the construction of a trail on the east side of Zane Avenue, which includes lining two culverts and reopening one culvert for the Zane Avenue crossing of Twin Creek. The site is 2.2 acres. Following development, the site will be 61 percent impervious with 1.35 acres of impervious surface, an increase of 0.65 acres.

The linear project creates new impervious area 0.65 acres and no fully reconstructed impervious area. This is below the Commission's threshold for stormwater management and is therefore not required to meet Commission rate, volume, and water quality requirements.

2. The project application was received on 11/30/2023. To comply with the 60-day review requirement, the Commission must approve or deny this project no later than the 1/11/2024 meeting. Sixty calendar-days expires on 1/29/2024.
3. The erosion control plan includes perimeter biolog, floating silt curtains, inlet protection, rip rap at outlets, and erosion control blanket on slopes. The erosion control plan meets Commission requirements.
4. The National Wetlands Inventory identifies one probable wetland, a seasonally flooded basin, on the downstream end of the Zane Ave culverts. The Commission is LGU for WCA administration. Wetland buffers are not impacted. The opening of the 60" culvert provides an equivalent hydraulic capacity to the existing conditions. The applicant meets Commission wetland requirements.
5. Twin Creek is a DNR Public Water, and the applicant has applied for a DNR Public Waters permit.

SC2023-08: Twin Creek Culverts at Zane Avenue

6. There is Zone A FEMA floodplain downstream of the Zane Ave culverts. The City used Shingle Creek's PCSWMM model to show that the project maintains flood elevations. The applicant meets Commission floodplain requirements.
7. The site is not located in a Drinking Water Source Management Area (DWSMA). The applicant meets Commission drinking water protection requirements.
8. A public hearing on the project will be conducted on 12/6/2023 as part of Planning Commission and City Council review of this project, meeting Commission public notice requirements.
9. No BMPs are proposed. The City of Brooklyn Park is the owner of the utilities and culverts a draft Operations & Maintenance (O&M) agreement is not required.
10. A Project Review Fee of \$2,100 has not been received.

Recommendation: Approval subject to the following conditions:

- 1) Receipt of \$2,100 project review fee.

Stantec Inc.
Engineers for the Commission

Todd Shoemaker, P.E.

12/7/2023

SC2023-08: Twin Creek Culverts at Zane Avenue

Figure 1. Site location.

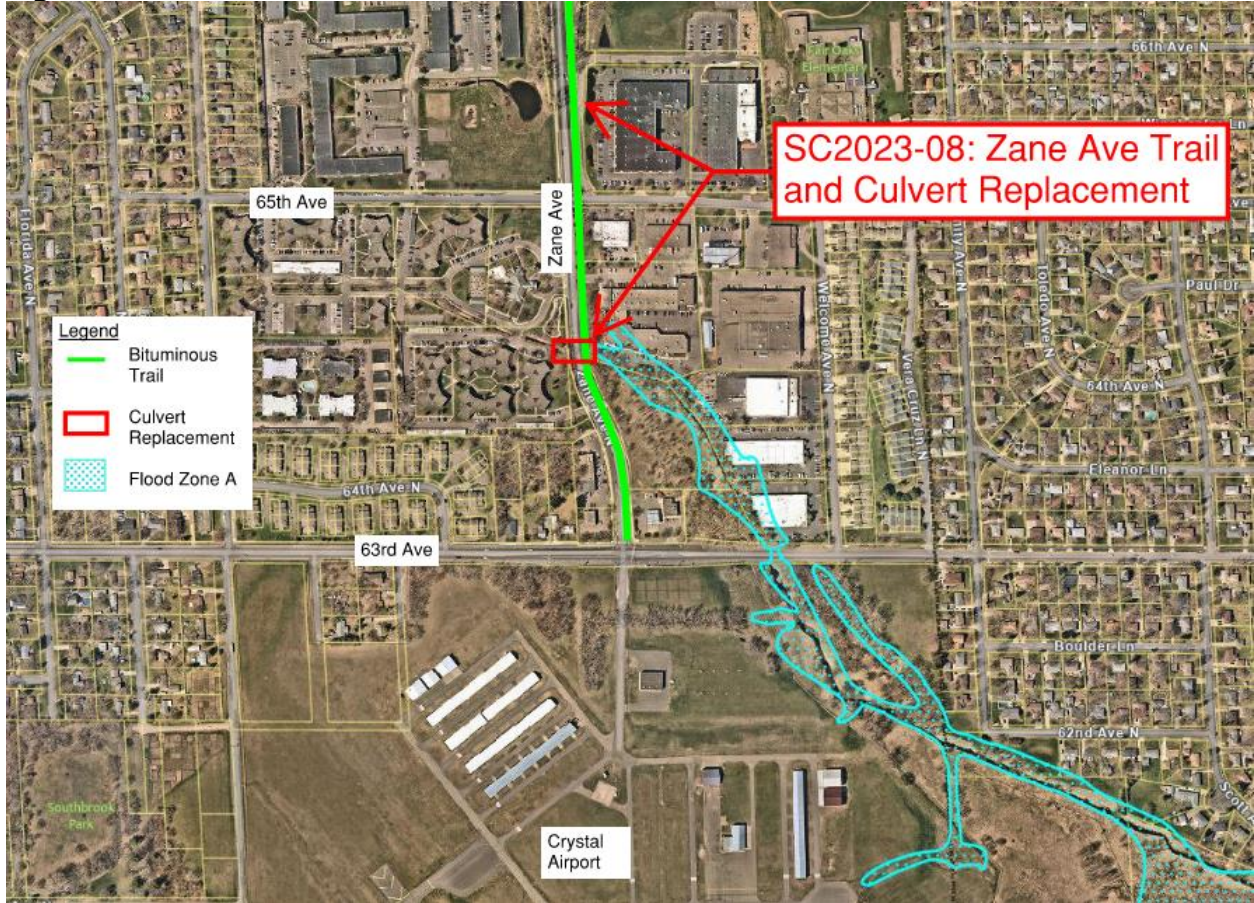
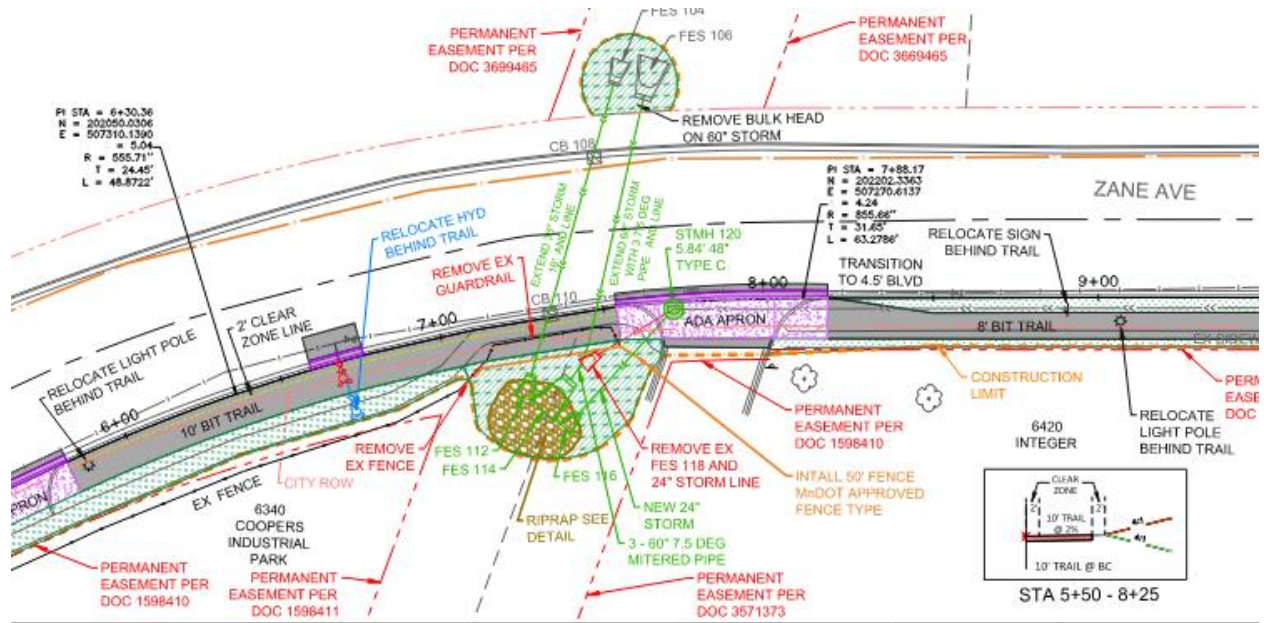


Figure 2. Site plan.

SC2023-08: Twin Creek Culverts at Zane Avenue



To: Shingle Creek WMO Commissioners

From: Todd Shoemaker PE
Katie Kemmitt

Date: December 6, 2023

Subject: Approval of Connections II Restoration Project Final Reimbursement

Recommended Commission Action	Authorize reimbursing Brooklyn Center \$245,186.28 for costs incurred and the transfer of the balance of funds to the Closed Projects Account.
--------------------------------------	--

On September 10, 2020, the Commission ordered project 2020-02, the Shingle Creek Connections II project, the restoration of Shingle Creek from Regent Avenue N to Brooklyn Boulevard in Brooklyn Center. The Commission levied \$400,000 plus \$24,200 in expenses to fund the project and received \$328,000 in Clean Water Fund (CWF) grant dollars. The City of Brooklyn Center was lead agency for the project, bidding and overseeing the project. Brooklyn Center engaged Stantec to design and provide construction management.

The project is now complete and final payments have been made. Brooklyn Center has submitted a reimbursement request of \$245,186.28 for expenses shown in Table 1 below. The project came in well under budget due to extremely favorable bids for the work. The Engineer’s Estimate for constructing the project was \$266,710 and the final construction cost was \$194,797.65. The balance of the project cost is design and construction management costs.

Because of the low bid costs and the allocation of CWF grant to this project, there is a significant surplus of funds. According to your capital projects policy, those surplus funds should be reallocated to the Closed Projects account, where they may be used for other capital projects or to limit the amount of new levy in future years. The estimated amount to be transferred is \$371,762.34. The final amount to be transferred depends on whether any additional levy is collected in 2023.

Table 1. Final costs and revenue for the Connection II Restoration project.

COST	As Established	As Bid	As Final
Construction Contract	\$350,000	\$183,684.00	\$194,797.65
Engineering	50,000	50,390.00	50,388.63
Other	0	0.00	0.00
TOTAL	\$400,000	\$245,749.04	\$245,186.28

REVENUE	As Established	As Bid	As Final*
Levy Available	\$424,200	\$420,799.60	\$49,037.26
CWF Grant	0	328,000.00	196,149.02
TOTAL	\$424,200	\$748,799.6	\$245,186.28
Excess Levy			\$371,762.34
Excess CWF			\$131,850.98
Balance to Closed Projects Account (estimate)*			\$375,162.74*

*Final amount of levy received, and thus final balance is pending any levy received in 2023

Shingle Creek and West Mississippi Watershed Management Commissions
CIP Project Final Request for Reimbursement

Project Name: Connections II Shingle Creek

Lead City: Brooklyn Center

Contact Person: James Soltis

CIP Project Cost	\$194,797.65
Amount Levied	\$424,200.00
Final Project Cost	\$245,186.28
Maximum Cost Share	\$245,186.28
Amount Requested	\$245,186.28
Difference	\$0.00

Final Project Cost	
Construction	\$194,797.65
Engineering	
Professional Services	\$50,388.63
City Staff	
Other*	
TOTAL	\$245,186.28
	x 100%
Maximum Cost-Share	\$245,186.28

*Explain NPDES permit costs and publishing costs for advertising the project

Please provide the following:

1. Final construction contract pay voucher
2. As-builts of features for which cost share is requested, and/or other information documenting that the project achieved the desired outcomes
3. Documentation of engineering and other project costs (can be a financial ledger report)

To: Shingle Creek WMO Commissioners

From: Todd Shoemaker PE
Diane Spector

Date: December 6, 2023

Subject: Approval of Bass Creek Restoration Project Final Reimbursement

Recommended Commission Action	Authorize reimbursing Brooklyn Park \$256,315.60 for costs incurred and the transfer of the balance of funds to the Closed Projects Account.
--------------------------------------	--

On September 10, 2020, the Commission ordered project 2020-05, the restoration of Bass Creek from Cherokee Drive to I-694 in Brooklyn Park. The Commission levied \$400,000 plus \$24,200 in expenses to fund the project and allocated \$70,000 of Watershed-Based Implementation Funding (WBIF) for the project. The City of Brooklyn Park was lead agency for the project, bidding and overseeing the project. Brooklyn Park engaged Stantec to design and provide construction management.

The project is now complete and final payments have been made. Brooklyn Park has submitted a reimbursement request of \$256,315.60 for expenses shown in Table 1 below. The project came in well under budget due to extremely favorable bids for the work. The Engineer’s Estimate for constructing the project was \$275,960 and the final construction cost was \$196,350.86. The balance of the project cost is design and construction management costs.

Because of the low bid costs and the allocation of WBIF grant to this project, there is a significant surplus of funds. According to your capital projects policy, those surplus funds should be reallocated to the Closed Projects account, where they may be used for other capital projects or to limit the amount of new levy in future years. The estimated amount to be transferred is \$238,315.52. The final amount to be transferred depends on whether any additional levy is collected in 2023.

Table 1. Final costs and revenue for the Bass Creek Restoration project.

COST	As Established	As Bid	As Final
Construction Contract	\$350,000	\$189,924.04	\$196,350.86
Engineering	50,000	55,825.00	55,799.73
Other	0	0.00	4,165.01
TOTAL	\$400,000	\$245,749.04	\$256,315.60

REVENUE	As Established	As Bid	As Final*
Levy Available	\$424,200	\$424,703.12	\$186,315.60
WBIF Grant	0	70,000.00	70,000.00
TOTAL	\$424,200	\$490,703.12	\$256,315.60
Excess Levy			\$238,387.52
Amount from WBIF			70,000.00
Balance to Closed Projects Account (estimate)*			\$238,315.52*

*Final amount of levy received, and thus final balance is pending any levy received in 2023

Shingle Creek and West Mississippi Watershed Management Commissions
CIP Project Final Request for Reimbursement

Project Name: CIP 3713-22 Bass Creek Restoration

Lead City: Brooklyn Park

Contact Person: Mitch Robinson

CIP Project Cost	\$196,350.86
Amount Levied	\$424,200.00
Final Project Cost	\$256,315.86
Maximum Cost Share	\$256,315.86
Amount Requested	\$256,315.86
Difference	\$0.00

Final Project Cost	
Construction	\$196,350.86
Engineering	
Professional Services	\$55,799.73
City Staff	\$3,346.09
Other*	\$818.92
TOTAL	\$256,315.60
	x 100%
Maximum Cost-Share	\$256,315.60

*Explain

NPDES permit costs and publishing costs for advertising the project

Please provide the following:

1. Final construction contract pay voucher
2. As-builts of features for which cost share is requested, and/or other information documenting that the project achieved the desired outcomes
3. Documentation of engineering and other project costs (can be a financial ledger report)

To: Shingle Creek/West Mississippi TAC

From: Lucas Clapp, EIT
Todd Shoemaker, PE

Date: December 7, 2023

Subject: France Avenue carp barrier winter removal

**Recommended
Commission Action**

For information and discussion.

Introduction

City of Robbinsdale staff receives frequent requests to remove accumulated debris at the France Avenue carp barrier on Ryan Creek. The debris reduces flow capacity, and since the Ryan Creek floodplain extends into the backyards of adjacent properties, this could cause additional inundation of turf areas adjacent to the Creek. City and Shingle Creek staff remove debris from the barrier after each complaint, but this approach may not be sustainable. Therefore, this memo considers removal of the carp barrier in the winter months when carp are less active. The barrier would then be reinstalled for spring and summer to prevent migration between Twin Lake and Ryan Lake, when carp movement is highest.

Background

The Ryan Creek carp barrier at France Avenue was installed to prevent the migration of carp between Ryan Lake and Lower Twin Lake. Carp barriers are most effective in the spring months when carp travel to shallow marshes to spawn like the ones on the northern part of Ryan Lake. The carp and their young then swim upstream back into the Twin Lake system. The barrier also aids in carp removal during the summer months by corralling carp. However, during winter months the carp barrier is less effective since the carp move to deeper, warmer waters until spring.

Considerations

Staff recently inspected the barrier to determine the feasibility of removing it during winter months. This is not an “off the shelf” product; it was custom designed and fitted to this unique location. We found that the gauge wire and square metal tubing that makes up the top and front nose of the barrier are welded together and cannot be removed (Photos 1 & 4). There are four side panels pinned between the metal tubing and lower concrete weir that bolt to the panels (Photo 2). These panels could be removed, but it is unknown how difficult they would be to lift once unbolted given they are sandwiched between the tubing and concrete weir with water pressure on the opposite side. Some of the central bolts that anchor the two inner removable panels have become rust-welded and would be difficult to remove without cutting (Photo 3).

Given our findings, we offer three options for the TAC to consider for recommendation to the Commission:

1. Continue current maintenance approach of responding as able to resident requests and manually clearing the barrier of debris.
2. Investigate repair or modification of current barrier to facilitate winter removal and less regular maintenance.
3. Investigate design and installation of new barrier.

Annotated Photos



1 – Top part of cage is welded together.



2 – Side Panels with Annotation.



3 – Inner 24-inch panel bolts rust welded.



4 – Overview of Findings



**SHINGLE CREEK / WEST MISSISSIPPI WATERSHED MANAGEMENT COMMISSION
MONTHLY COMMUNICATION LOG
December 2023**

Date	From	To	SC	WM	Description
11/3/23	Ali Stone		X	X	Removed stream monitoring equipment for winter season.
11/14/23	MPCA	Katie Kemmitt	X	X	Attended MPCA informational session on planning grants for stormwater, wastewater, and community resilience
11/21/23	Stu Froelich, Schmidt Lake Assoc.	Katie Kemmitt, Ali Stone, Ben Scharenbroich	X		Inquiring about City and Watershed monitoring plan for Schmidt Lake
11/29/23	Todd Shoemaker		X	X	Attended Blue Line LRT stormwater design meeting.
11/30/23	Todd Shoemaker	Brad Wozney, BWSR	X	X	Share updated legal boundary files. (Brad is temporary Board Conservationist replacement for Steve Christopher.)
12/1/23	Lucas Clapp	Krista Dunagan, LCI Landscapes		X	Clarify project review requirements for Mississippi Riverbank stabilization project.
12/4/23	Amy Timm, MPCA	Katie Kemmitt	X		Meeting to discuss Crystal Lake 319 grant management

To: Shingle Creek/West Mississippi WMO Commissioners

From: Todd Shoemaker, PE, CFM
Katie Kemmitt

Date: December 6, 2023

Subject: December 2023 Staff Report

**Recommended
Commission Action**

For discussion and information.

General Updates*Highways 252/94 EIS Review*

The Federal Highway Administration (FHWA) and Minnesota Department of Transportation (MnDOT) has published the Final Scoping Decision Document (SDD) on November 7, 2023. The Final SDD includes responses to public and agency comments received during the scoping comment period and identifies alternatives to be studied in the EIS. The Commission EIS Review subgroup met on December 5, 2023 to review the SDD and next steps, which are summarized in the attached memo.

Blue Line Light Rail Transit (LRT)

Staff attended a meeting with the LRT design team to discuss stormwater management options along the corridor and within Robbinsdale, Crystal, and Brooklyn Park. Following the meeting, we are more closely reviewing drainage maps provided by the design team, modeling results, stormwater management options, and maintenance responsibilities.

Project Updates*Meadow Lake Drawdown*

Monitoring has ceased for 2023. Staff will return in spring to monitor the vegetation and water quality of the lake.

Crystal Lake Management Plan

The Crystal Lake Management Plan 319 grant is being extended through June 30, 2024 to allow the Commission to meet match requirements and complete another summer of carp removals.

Eagle Lake Subwatershed Assessment

The City of Maple Grove will bring the Eagle Woods Park project through their Parks Department process for review and input to determine if it is recommended for implementation. After a project is selected, Stantec will develop plans to a 30% design level and finalize the report.

Shingle Creek Brookdale Park Remeander & Trail Bank Stabilization and Fish Access Improvements

Stantec and the City of Brooklyn Park have developed a modified concept based on community input received to-date. We will be presenting the modified concept at a neighborhood meeting on Tuesday, December 12 at 6 PM.

Mississippi Riverbank Stabilization Feasibility Study

City of Brooklyn Park and Hennepin County staff are contacting residents to gauge interest in additional study and to get written permission to access their properties to perform surveys and site visits. From those that are interested, staff will then select 5-6 properties to visit and evaluate erosion and potential solutions.

Items in Bold Italic have changed since the last report

Grant Projects

Project	Grant Source	Expiration	Status
<i>Shingle Creek</i>			
Shingle Cr Connections II	CWF	12/31/23	Project is complete, final payment pending
Bass Creek Restoration	WBIF	12/31/23	Project is complete, final payment pending
Meadow Lake Mgmt Plan: Drawdown	WBIF	12/31/23	Complete, final grant payment pending
Crystal Lake Mgmt Plan	MPCA 319	12/31/23	Waiting on final sediment core results
Wetland 639W SRP Channel Extension	HCES	12/31/23	Considering an extension
Meadow Lake Mgmt Plan	CWF	12/31/24	Grant has been extended for possible 2024 BMPs
Palmer Creek Estates Stream Resto	CWF	12/31/24	Stream work complete, working on hydrodynamic separator installation, completion expected this fall
Bass Lake Vegetation Mgmt	DNR CPL	6/30/25	In progress
Eagle Lake SWA	WBIF	12/31/25	In progress
Gaulke Pond Area SWA	WBIF	12/31/25	In progress
<i>West Mississippi</i>			
Miss Riverbank Streambank Stabilization	WBIF	12/31/25	In progress

Cost Share Projects

Project	Partner	Amount	Status
<i>Shingle Creek</i>			
Shingle Creek Rain Gardens	City-Mpls	\$50,000	In progress
Crystal Community Center	City-Crystal	\$41,559	In-progress Final
Highland Gables	Partner-Metro Blooms	\$49,993	In progress
<i>West Mississippi</i>			
Miss Gateway Shoreline Stabil	Partner-3 Rivers	\$75,000	Awarded, not yet started

Encumbered Balances as of 9/30/23 (Amounts are approximate)

Watershed	City Cost Share	Partnership	Closed Projects	Assigned	Unrestricted
Shingle Creek	\$284,000 \$292,639	\$106,000	\$106,000	\$23,000	\$69,000
West Mississippi	\$460,000	\$130,000	\$151,000	\$154,000*	\$120,000

*About \$89,000 assigned to "Grant Match account"

To: Shingle Creek/West Mississippi WMO Commissioners

From: Katy Thompson, PE, CFM
Todd Shoemaker, PE, CFM

Date: December 5, 2023

Subject: Highway 252 / I-94 Scoping Decision Document Update

**Recommended
Commission Action**

Information Only

Introduction

The Shingle Creek and West Mississippi Watershed Management Commission (Commission) has been an active participant in the National Environmental Protection Act (NEPA) process for the proposed Minnesota Department of Transportation (MnDOT) Highway 252 / I-94 project. The Commission created the Hwy 252/I-94 EIS Review subgroup to track MnDOT’s process and keep the larger Commission up to date on the project developments.

Background

Since our last update to the Commission, Stantec provided comments on the Scoping Document (SD) and Draft Scoping Decision Document (DSDD) on behalf of the Commission during the 60-day public comment period on May 19, 2023. MnDOT and its consultants released the Final Scoping Decision Document (SDD) for agency review on October 2, 2023. MnDOT also held a Cooperative and Participating Agency Meeting #9 on October 12, 2023 (Attachment 1) and held a Political Advisory Committee (PAC) meeting on October 25, 2023, to present the final SDD, which was published in the Minnesota *Environmental Quality Board (EQB) Monitor* on November 7, 2023.

Final SDD

The final SDD takes public input and preliminary technical analyses into consideration to determine a “reasonable range of project alternatives that meet purpose and need” of the project that will advance to the next phase of the NEPA process, the Draft Environmental Impact Statement (DEIS). The DEIS will further refine the project alternatives with additional public input, technical analyses, and consideration of social, environmental, and economic (SEE) impacts.

The final SDD released in October and available on the project website, includes all written and oral comments received during the 60-day period, the comment responses specific to the Commission are included as Attachment 2 of the SDD. In general, MnDOT acknowledged the Commission’s concerns regarding the protection of surface and groundwater from potential contamination due to traffic collisions, spills, and chlorides. The summarized comments and responses are provided below:

Groundwater and Surface water Impacts and Considerations

Responses note they will consider groundwater contamination utilizing soils, transmissivity, well locations, Drinking Water Supply Management Emergency Response Areas (DWSMAs), and groundwater elevation to site BMPs for all alternatives that are moving forward (no build, four lane expansion, and six lane expansion). The data outlined above will determine what types of BMPs are appropriate and adhere to Minnesota Pollution Control Agency (MPCA) and Commission rules and regulations to the extent possible.

Spill Management Response

The response notes MNDOT has a technical memo for spill response and there are plans to introduce a new policy regarding spill management. Additionally, they note BMPs related to some alternatives may help to slow the rate of contamination to groundwater or surface waters.

MNDOT utilizes a technical memo that outlines how to respond to spills. This document states trained MNDOT personnel, or an emergency response contractor, will remove spills. The goal is to return the spill site to pre-incident conditions. The PCA is noted as a party that may dictate clean-up effort. Any contaminated soils would be removed on the ROW and contaminants that cannot be removed in a timely manner will be covered. There is less specificity to what is done if contamination enters surface waters or outside the ROW.

Given the technical memo is being replaced by a new policy. It may be beneficial for the watershed to request provisions to the new policy that relate to the process of clean-up if contamination enters areas that pose a threat to water resources or outside the ROW.

Chloride Management

The response acknowledges increase to impervious directly correlates to increased chloride application. They outline the chloride management process for MNDOT roads and the responsibility to adhere to TMDLs and minimize chloride application per the Minneapolis MS4 permit.

Given climate trends show more frequent freeze thaw temperatures that result in increased chloride applications on impervious surfaces It may be beneficial to request MNDOT to explore chloride mitigation using BMPs.

Adherence to SCWMC and MPCA Rules

The responses acknowledge the adherence to the MPCA Construction of Stormwater rules, TMDLs, and SCWMC rules for the scenarios that increase impervious surface. They note the types of practices implemented, such as filtration, infiltration, or ponds with or without liners, may vary depending on subsurface and groundwater analysis.

No actions were taken as part of the final SDD, but these issues will be part of the SEE evaluation criteria used to compare project alternatives in the EIS. Additionally, MnDOT further acknowledged that it will comply with its MS4 stormwater permit, the NPDES Construction Stormwater Permit, and local

watershed standards, as well as its internal guidance to design the stormwater management system, address TMDL concerns, and for any future emergency management and incident response actions.

Next Steps

The Commission EIS subgroup met again on December 5, 2023, to review the final SDD, MnDOT responses to Commission comments, and discuss next steps. MnDOT intends to publish its Notice of Intent (NOI) to prepare an EIS in the *Federal Register* by May 2024, which will kick off the federal process and generally triggers the two-year time limit for preparation of an EIS. There are no scheduled public engagement opportunities at the moment; we expect the next opportunity will be in late winter or early spring 2024. Figure 1 and MnDOT timeline provide the most current information on the environmental review process available.

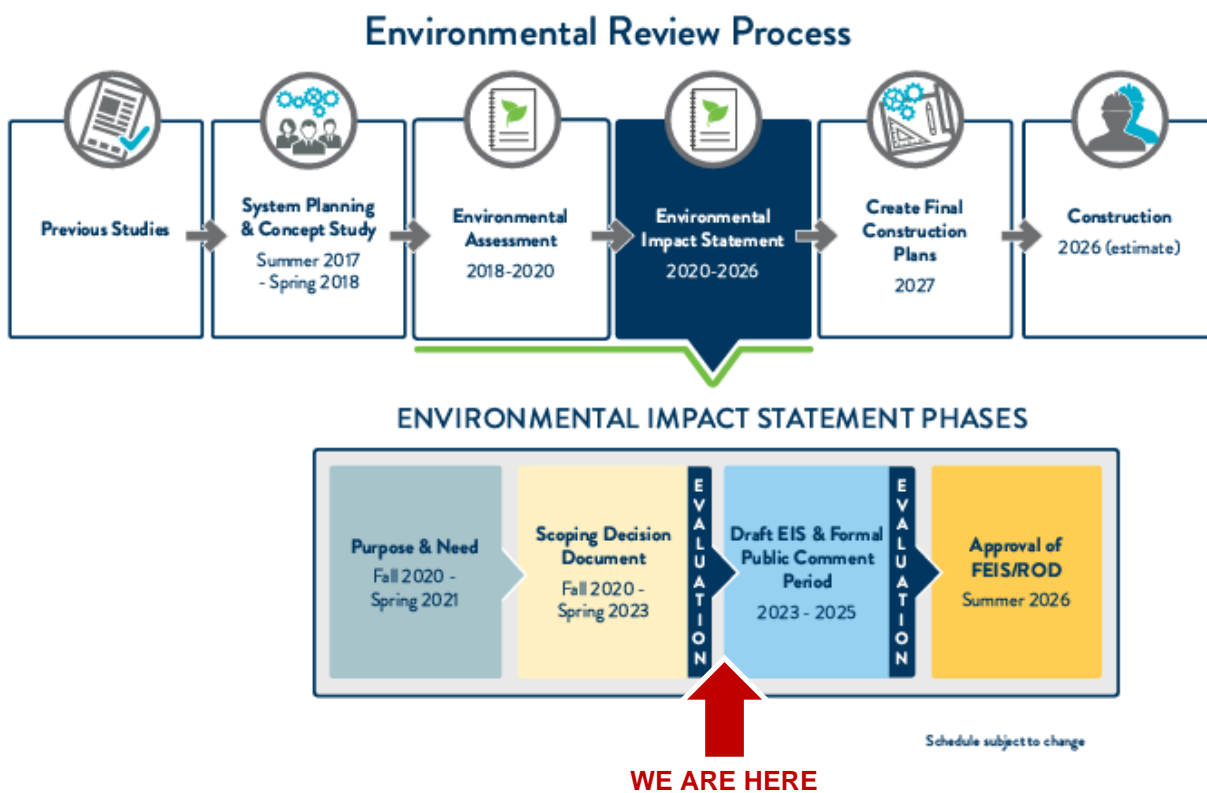


Figure 1. Proposed Hwy 252/ I-94 Environmental Review Process

MnDOT has proposed the following tentative timeline for major EIS milestones with the Highway 252 / I-94 project, as follows:

- Notice of Intent: November 2023 to May 2024
 - In process
- Draft EIS: June 2024 to January 2026
 - The DEIS phase will include a 45-day public review and comment period, required under NEPA.
- Final EIS: February 2026 to August 2026

- MnDOT will respond to substantive comments, and if necessary, conduct further analyses.
 - Another public or agency review period by be included, if needed.
- Record of Decision (ROD): August 21, 2026
 - The NEPA process requires a minimum 30-day “wait period” before issuing the ROD.
 - The ROD officially concludes the EIS process and issues the final approved EIS for the project.

To: Shingle Creek/West Mississippi WMO Commissioners

From: Todd Shoemaker PE
Diane Spector
Katie Kemmitt

Date: December 6, 2023

Subject: 2023 Annual Progress Review

**Recommended
Commission Action**

Review, discuss, and accept the attached 2023 Annual Progress Review.

As with the Third Generation Watershed Management Plan, the Fourth Generation Plan, adopted in 2023, states that the Commissions will annually review progress toward Fourth Generation Plan goals, and that this evaluation will become part of the Annual Report. There is no specific format for such an annual review. Since the Third Generation Plan was adopted, the Board of Water and Soil Resources (BWSR) adopted revised Minnesota Rules 8410 that requires WMOs to review progress every two years.

The purpose of the annual review is first to determine progress towards the goals, and second to be sure the Commissions stay on track to reach them. The annual review is also an opportunity to discuss whether the goals and actions in the Plan still make sense or if they should be considered for modification or enhancement, perhaps to add in new priorities. Ideally, this annual review is also an opportunity to start thinking about your next year's work plan.

Review of Progress

This will be the first review of progress towards the Fourth Generation Plan goals. Attached is matrix showing the Fourth Generation Plan goals and progress towards reaching each goal, similar to the format of the annual progress review used in previous years. These findings will be reported in your 2023 Annual Report to BWSR.

2023 Highlights

Some non-routine highlights of the past year include:

- In January the Commissions solicited proposals from technical, administrative, and legal consultants, and selected Stantec, JASS, and Kennedy Graven respectively to serve for 2-23-2024.
- Following adoption of the Fourth Generation Plan, the Commission's attorney began drafting updates to the Joint Power Agreements.
- Updated the contract with the Met Council to provide stormwater and water quality review services for that part of the Blue Line Extension corridor that travels through the watersheds.
- Finalized a major update to both the legal and hydrologic boundaries between the watersheds and neighboring Elm Creek, Bassett Creek, and Mississippi WMOs.
- As requested by Commissioners, began formal review of the Highway 282/94 update proposed by MnDOT.
- Continued to refresh the website and added a 'Are you in the watershed?' interactive map to help with project review submittals.

CAPITAL AND COST SHARE PROJECTS

- Worked with the City of Maple Grove to initiate the Eagle Lake Subwatershed Assessment study to identify potential watershed BMPs and assess internal load treatment feasibility.
- Worked with the City of Crystal to complete the Gaulke Pond Subwatershed Assessment to identify potential watershed BMPs. Identified the Colorado Ave infiltration trench as the top project, and authorized the development of a grant application to complete a formal Feasibility Study which will be submitted to MPCA for potential funding under the Community Resilience grant program.
- Worked with the City of Robbinsdale to undertake the third year of carp removals on Crystal Lake. Collected final sediment cores to assess alum treatment success as the Crystal Lake Management Plan transitions from capital project to ongoing maintenance.
- Worked with the City of Plymouth and the Bass Lake Improvement Association on the fourth year of curly-leaf pondweed treatment and to complete a grant-funded aquatic vegetation translocation project to test ways of increasing plant diversity in Bass Lake. Stantec staff presented the project at the annual North American Lake Management Society meeting.
- Worked with the City of New Hope to undertake an alum treatment and herbicide treatment on Meadow Lake. Extended the Clean Water Fund grant for the project through 2024 to continue monitoring and adaptive management.
- Completed channel construction on the Palmer Creek Estates channel stabilization project.
- In 2023, the Commission by Minor Plan Amendment created a new Capital Projects Maintenance Fund intended to support the completion of ongoing activities needed to continue the benefits achieved by capital projects. The first year of project maintenance was completed in 2023 and included Bass Lake curly-leaf pondweed treatment and Crystal Lake carp management.
- Approved cost share request from Three Rivers Park District for Mississippi Gateway Regional Park stabilization in the amount of \$75,000.
- Worked with the City of Brooklyn Park and Hennepin County to undertake an updated and more detailed assessment of conditions and potential stabilization work along the Mississippi River streambank.
- Awarded a City Cost Share grant to the City of Crystal for infiltration improvements at the Crystal Community Center.
- Partnership Cost Share projects were initiated with Metro Blooms/Dwell management for improvements at the Highland Gables multifamily complex and with Three Rivers Park District for improvements at Gateway Park on the Mississippi River in Brooklyn Park.

GRANTS

- As a result of the Eagle Lake Subwatershed Assessment, prepared and submitted a Clean Water Fund grant application for the Eagle and Pike Lakes Management Plan project for internal load treatments.
- Prepared an application to the MPCA's Community Resilience Grant program to complete a feasibility study for an infiltration project identified in the Gaulke Pond Subwatershed Assessment in 2023.
- The Shingle Creek and West Mississippi Watershed Based Implementation Funding (WBIF) Convene Groups allocated grant funds to the subwatershed assessments identified above, and the Mississippi Riverbank Stabilization Feasibility Study. In addition, the group agreed to pool part of their WBIF funding along with shares from Elm Creek, Bassett Creek and the Richfield-Bloomington WMO to fund a shared Education and Outreach Coordinator with Hennepin County. That shared educator has been hired and is actively working on developing and implementing programming on joint education and outreach strategies agreed to by the five WMOs.
-

The following tables outline the goals guiding the Fourth Generation Plan. Strategies for addressing each of the four goals were described in the Plan. Progress towards each strategy is described in the tables, as well as current status and future actions.

Goal 1: Protect, maintain, and improve the water quality and ecological integrity of the water and natural resources within the watersheds and the downstream receiving waters.

Goal 1 Strategies	2023 Actions	Overall Progress	Moving Forward	Status
Manage the surface water resources of the watershed to improve water clarity in the balance of the lakes by 10% over the average of the previous ten years.	<ul style="list-style-type: none"> - Alum treatment applied to Meadow Lake - Monitored vegetation community in Bass Lake 	Success is variable. Alum treatments for Bass and Pomerleau completed in 2019 and 2020 and lakes now meets state standard. Schmidt, Lower Twin, and Ryan have all been removed from the 303(d) list.	Continue to implement load-reduction projects as funding and opportunities arise.	Ongoing
Implement load reduction actions sufficient to achieve state water quality standards in Eagle, Crystal, and Middle Twin Lakes.	<ul style="list-style-type: none"> - Completed Eagle Lake Subwatershed Assessment and submitted Clean Water Fund grant for internal load treatments - Invasive carp removals on Crystal Lake - Monitored water quality and vegetation on Middle and Upper Twin Lakes 	The Eagle Lake Subwatershed Assessment is underway, and the Commission submitted a Clean Water Fund grant for internal load treatments in Eagle and Pike Lakes. Carp removals and alum treatments in Crystal Lake have improved internal loading conditions.	Move forward with alum treatments on Eagle and Pike (pending results of Clean Water Fund grant review); Continue maintenance work on Crystal Lake; continue plan for management on Middle Twin Lake (see CIP in Fourth Generation Plan)	Ongoing
Make progress toward achieving the state standards in the other lakes and streams in the watersheds	<ul style="list-style-type: none"> - Completed Bass Creek and Connections II stream restoration projects 	Bass and Pomerleau Lakes are scheduled to be removed from the 303(d) list in 2024, totaling 5 delisted lakes in the watershed.	Continue to implement load-reduction projects as funding and opportunities arise.	Ongoing
Administer rules and standards requiring new development and redevelopment to control the loading of pollutants from their sites.	<ul style="list-style-type: none"> - Several project reviews completed 	Rules and Standards have been updated regularly and continue to be enforced.	Continue enforcing Rules and Standards	Ongoing

Maintain as feasible no net loss of wetland acreage and functions and values.	- N/A	The Commission or delegated cities enforces the Wetland Conservation Act (WCA) for development in the watershed.	Continue to enforce WCA.	Ongoing
---	-------	--	--------------------------	---------

Goal 2: Reduce stormwater runoff rates and volumes to limit flood risk, protect conveyance systems, protect surficial groundwater, and reduce or mitigate impacts that have already occurred.

Goal 2 Strategies	2023 Actions	Overall Progress	Moving Forward	Status
Maintain the existing 100-year flood profile throughout the watersheds.	- Several project reviews completed	Rules and Standards requires 100-year runoff rates to not exceed predevelopment rates	Continue enforcing Rules and Standards	Ongoing
Administer rules and standards requiring new development and redevelopment to control the rate and volume of runoff from their sites.	- Several project reviews completed	Rules and Standards have been updated regularly and continue to be enforced.	Continue enforcing Rules and Standards	Ongoing
Work with Hennepin County to identify the proper jurisdiction for Shingle Creek, where currently designated as County Ditch #13, that provides the most consistent support and protection for the resource	- N/A	Considered during development of Fourth Generation Plan.	Will reconsider as requested.	Complete
Work in cooperation with Hennepin County in the development and implementation of local and regional groundwater protection strategies.	- N/A	Not yet completed	Will consider opportunities as they arise.	Ongoing

Goal 3: Educate and engage all stakeholders in the watersheds on surface water issues and opportunities.

Goal 3 Strategies	2023 Actions	Overall Progress	Moving Forward	Status
-------------------	--------------	------------------	----------------	--------

<p>Operate a public education and outreach program that meets the NPDES Phase II education requirements for the member cities, with special emphasis on topics such as chloride, bacteria/pet waste, and nutrient management.</p>	<ul style="list-style-type: none"> - Hennepin County shared education and outreach coordinator position posted and filled. - Shared coordinator is developing educational materials for use by the Commission and member cities. - Continued to update Commission web site 	<p>Shingle Creek and West Mississippi partner with Bassett Creek and Elm Creek and other agencies and nonprofits to provide education and outreach through the West Metro Water Alliance (WMWA) and fund a shared education and outreach coordinator at Hennepin County. An annual report is provided to the member cities for the NPDES annual report.</p>	<p>Continue WMWA partnership to enhance education and outreach opportunities and common messaging.</p>	<p>Ongoing</p>
<p>Provide supplemental education and outreach engagement on TMDL and other topics of interest to various stakeholders, including ongoing outreach to lake associations.</p>	<ul style="list-style-type: none"> - Hennepin County shared education and outreach coordinator is planning workshop for lakeshore restoration 	<p>Staff attend lake association and city meetings as requested.</p>	<p>Continue engagement with stakeholders as projects arise. Provide support to City staff as requested.</p>	<p>Ongoing</p>
<p>Incorporate equity principles of diversity, equity, inclusion, and access into watershed programs and projects.</p>	<ul style="list-style-type: none"> - N/A 	<ul style="list-style-type: none"> - N/A 	<p>Work towards developing a template for reviewing projects for diversity, equity, and inclusion aspects.</p>	<p>Ongoing, to be addressed in 2024.</p>

Goal 4: Anticipate and proactively work to withstand adverse impacts from changing environmental and climate conditions.

Goal 4 Strategies	2023 Actions	Overall Progress	Moving Forward	Status
-------------------	--------------	------------------	----------------	--------

Model the potential impacts of a non-static climate on water resources with the best available predictive data.	- N/A	Completed HUC8 model under Third Generation Plan. New flood maps are still in development by FEMA/DNR.	Use existing model to evaluate future scenarios, as appropriate.	Ongoing.
Quantify and qualitatively assess risk and evaluate and implement responses for mitigation	- N/A	Completed HUC8 model under Third Generation Plan. New flood maps are still in development by FEMA/DNR. Several completed stream restoration/ stabilization projects contribute to watershed resilience.	Will be completed as future scenarios are modeled.	Ongoing.
Collaborate with other agencies and organizations on joint efforts to manage impacts both locally and regionally.	- N/A	N/A	Participate in joint efforts as available.	Ongoing.
Develop strategies to appropriately manage future impacts.	- Submitting MPCA Community Resilience grant for Colorado Ave trench feasibility	Completed HUC8 model under Third Generation Plan. New flood maps are still in development by FEMA/DNR. Several completed stream restoration/ stabilization projects contribute to watershed resilience.	Continue to explore opportunities to increase watershed resilience. Continue implementing stormwater BMPs and enforcing Rules & Standards.	Ongoing.

To: Shingle Creek/West Mississippi WMO Commissioners/TAC

From: Todd Shoemaker PE
Katie Kemmitt

Date: December 8, 2023

Subject: 2024 Work Plan

**Recommended TAC/
Commission Action**

For discussion and comment.

The Commission will establish their 2024 work plans at their January 2024 meeting. The purpose of this item is to solicit input from the TAC and Commissioners about potential items for consideration in 2024. It will be helpful to refer to the 2023 Review of Progress as you think about what you want to accomplish. Also note that the Commissions have a very full plate already lined up for 2024 from both routine and carryover activities, so the capacity (and the budget) to take on new activities is relatively limited.

There are several routine items we won't detail here, such as project reviews, the monitoring program, ongoing administration of the CIP/capital projects and the cost share programs, grant and project administration, education and outreach work with WMWA, etc. You also have a number of ongoing subwatershed assessments (SWAs) and feasibility studies that are likely to turn into levy and/or grant projects, and some lake management plans with ongoing maintenance needs. The following are some notable additional actions for 2024:

- Working with the Joint Outreach Coordinator to offer customized workshops on shoreline restoration to lakeshore residents as part of an effort to enhance outreach to lake associations. This will focus on the lakes that already have or will have Lake Management Plans in implementation (Eagle, Bass, Meadow, and Crystal), although it will be open to all.
- For capital projects and potentially other Commission activities, developing a format and process for incorporating documentation of potential impacts to and outreach to underrepresented populations to increase engagement and help improve equitable outcomes.
- Continuing to work with WMWA and the Joint Coordinator to identify and implement additional targeted messaging on the proper use of chlorides for ice control.
- Implementing the Eagle Lake Management Plan, including a potential fall 2024 alum treatment and one or more small projects identified in the subwatershed assessment (SWA).
- Initiating the review process for the revised Joint Powers Agreement, which may require a focused education and outreach effort for city staff and councils.

Staff would appreciate your feedback and suggestions for any additional high-priority activities in 2024. We will bring a complete workplan to you in January 2024.