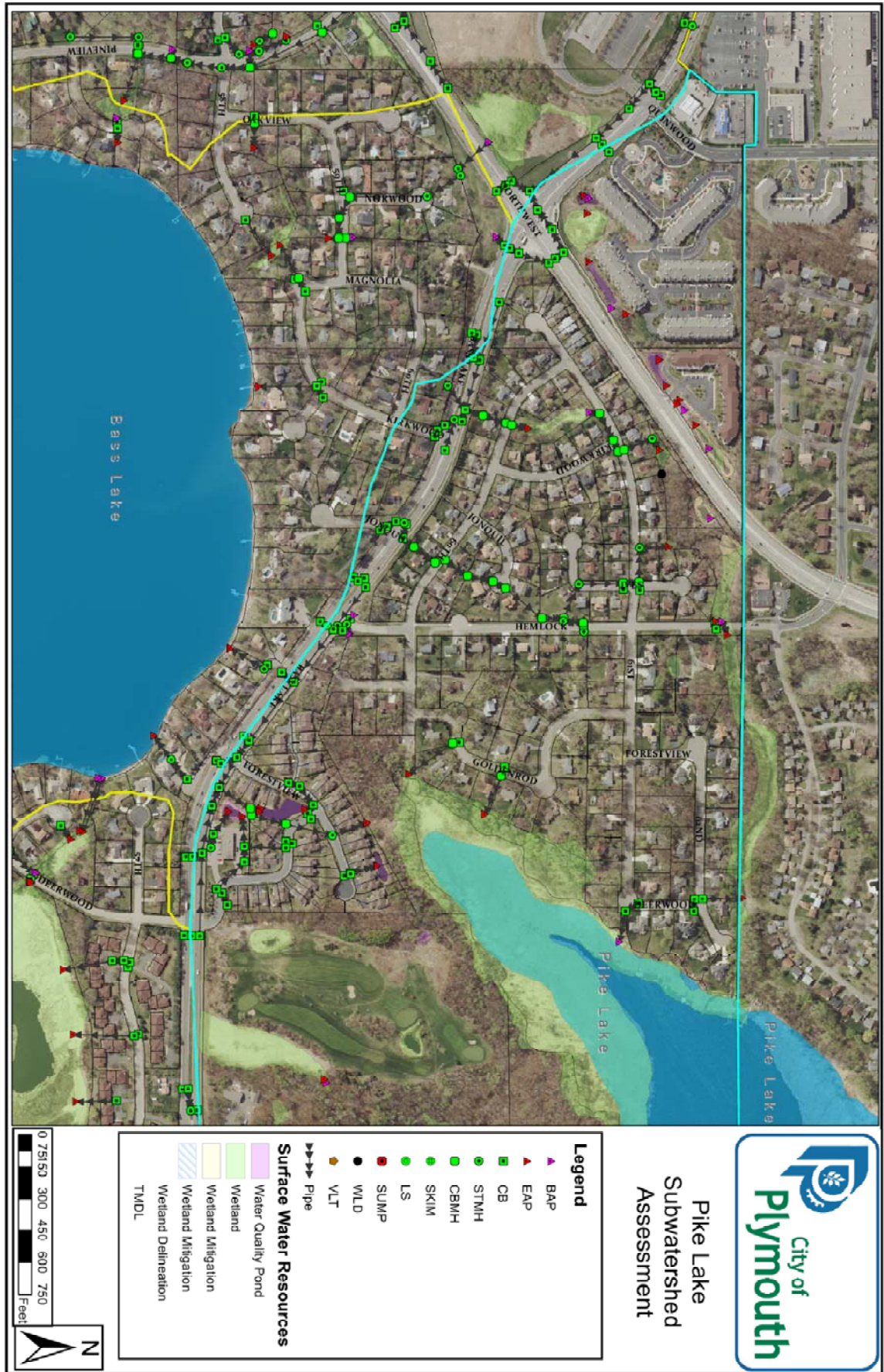


**Shingle Creek and West Mississippi Watershed Management Commissions  
 Request to Perform a Subwatershed Assessment**

Subwatershed Assessments are detailed studies of a small area, typically (but not limited to) less than 500 acres in size. This assessment includes delineation and modeling of smaller catchment areas, and review of each catchment area to determine the optimal type and placement of one or more load and volume reduction BMPs. Use this form to submit requests for Subwatershed Assessment.

Please attach a figure showing the requested area to be assessed. Please note that this boundary may be modified based on subwatershed delineation.

Date:	1/19/2016
City:	Plymouth
Contact Name:	Ben Scharenbroich
Telephone:	763-509-5527
Email:	<a href="mailto:bscharenbroich@plymouthmn.gov">bscharenbroich@plymouthmn.gov</a>
Project Area Name:	Pike Lake
Year Requested:	2016
Reason for Request:	<p>The City of Plymouth is requesting a subwatershed assessment for the western side of Pike Lake to identify specific locations for BMPs that would help meet the TMDL goals. Overall a 49% load reduction (WLA &amp; LA) is required to meet the goals of the TMDL.</p> <p>The Cities of Plymouth &amp; Maple Grove along with MNDOT &amp; Hennepin County are charged with reducing the stormwater loading to the lake by 164.91 lbs/year to meet these TMDL goals.</p>



**Pike Lake  
Subwatershed  
Assessment**

**Legend**

- ▲ BAP
- ▲ EAP
- CB
- STMH
- CBMH
- SKIM
- LS
- SUMP
- WLD
- VLT
- Pipe

**Surface Water Resources**

- Water Quality Pond
- Wetland
- Wetland Mitigation
- Wetland Mitigation
- Wetland Delineation
- TMDL

