

3235 Fernbrook Lane N • Plymouth, MN 55447  
 Tel: 763.553.1144 • Fax: 763.553.9326  
 Email: judie@jass.biz • Website: www.shinglecreek.org

February 5, 2026

Commissioners **and**  
 Technical Advisory Committee Members  
 Shingle Creek and West Mississippi  
 Watershed Management Commissions  
 Hennepin County, Minnesota

*The agenda and meeting packets are available on  
 the Commission's web site.*  
<http://www.shinglecreek.org/minutes--meeting-packets.html> **and**  
<http://www.shinglecreek.org/tac-meetings.html>

Dear Commissioners and Members:

Regular meetings of the Shingle Creek and West Mississippi Watershed Management Commissions will be held Thursday, February 12, 2026, at Plymouth Community Center, 14800 34th Avenue North, Plymouth, MN. Lunch will be served at 12:00 noon and the meetings will convene concurrently at 12:45. We will meet in the **Aspen Room** on the main level.

**The Technical Advisory Committee (TAC) will meet at 11:45 a.m., prior to the regular meeting.**

Please make your meal choice from the items below and email me at judie@jass.biz to confirm your attendance and your meal selection by **noon, Tuesday, February 10, 2026.**

Thank you.

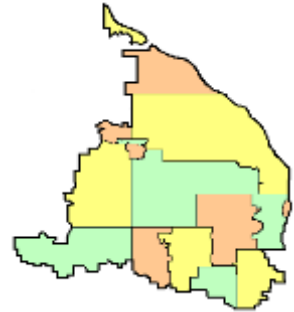
Judie A. Anderson  
 Administrator  
 JAA:tim

cc: Alternate Commissioners      Member Cites      Troy Gilchrist      TAC Members  
 Stantec Consulting Services      BWSR      MPCA      HCEE

Z:\Shingle Creek\Meetings\Meetings 2026 SCWM\02 Regular and TAC Meeting Notice.docx

**Order your deli sandwich box lunch. Sandwiches come with lettuce, tomato and mayo. As an alternative you may specify your sandwich with **wheat bread** or as an **unwich** (lettuce wrapped).**

- 1** Pepe – Ham and cheese
- 2** Big John – Roast beef
- 3** Totally Tuna – Tuna salad and cucumber
- 4** Turkey Tom – Turkey
- 5** Vito – salami, capocollo, cheese, onion, oil and vinegar, oregano-basil (no mayo)
- 6** The Veggie – double cheese, avocado spread, cucumber
- 14** Bootlegger Club – Roast beef and turkey



3235 Fernbrook Lane N • Plymouth, MN 55447  
 Tel: 763.553.1144 • Fax: 763.553.9326  
 Email: judie@jass.biz • Website: www.shinglecreek.org

A combined regular meeting of the Shingle Creek (SC) and West Mississippi (WM) Watershed Management Commissions will be convened Thursday, February 12, 2026, at 12:45 p.m. Agenda items are available at <http://www.shinglecreek.org/minutes--meeting-packets.html>. *Black typeface denotes SCWM items, blue denotes SC items, green denotes WM items.*

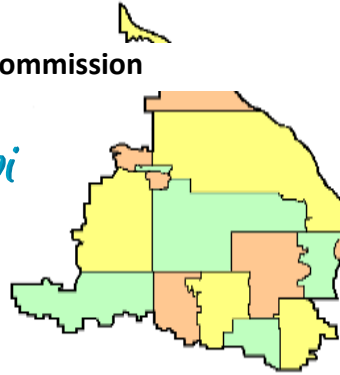
**A G E N D A | February 12, 2026**

1. Call to Order.
  - ✓✓ SCWM a. Roll Call.
  - ✓✓ SCWM b. Approve Agenda.\*
  - ✓✓ SCWM c. Approve Minutes of Last Meeting.\*
2. Reports.
  - ✓✓ SCWM a. Treasurer’s Report and Claims\*\* - voice vote.
3. Open Forum.
  - ✓✓ SCWM a. Ben Torrison, USGS.
4. Election of Officers | Annual Appointments.
  - a. Election of Officers. *Currently:*

Chair:	Andy Polizn	Gerry Butcher
Vice Chair:	Wayne Sicora	David Mulla
Secretary:	Karen Jaeger	Karen Jaeger
Treasurer:	Burt Orred, Jr.	Karen Jaeger
  - b. Annual Appointments. *Currently:*  
 Official Newspaper – Osseo-Maple Grove Press.  
 Official Depositories – U.S. Bank and the 4M Fund.  
 Deputy Treasurer – Judie Anderson.  
 Auditor – Barton, Walter & Krier. Our former auditors at Johnson Company, Ltd. are now affiliated with BWK.
5. Project Reviews.
  - ✓ SC a. SC2026-01 Boston Scientific, Maple Grove.\*
6. Old Business.
  - ✓✓ SCWM a. 2025 Annual Progress Review.\*
7. New Business.
  - a. 2026 Work Plans.\*
    - ✓ SC 1) Shingle Creek.\*-
    - ✓ WM 2) West Mississippi.\*
  - b. 2026 Annual Monitoring Programs.
    - ✓ SC 1) Shingle Creek.\*-
    - ✓ WM 2) West Mississippi.\*
8. Grant Opportunities.
9. Education and Public Outreach.
  - SCWM a. Update.\*\*
  - b. Grace Barlow Update.\*
  - c. WMWA – next meeting – 8:30 a.m., via Zoom, on March 10, 2026.  
<https://us02web.zoom.us/j/922390839?pwd=TKlBQW1ZNhVXZkdtdTdBTSZkZmZuQT09>

(over)

- SCWM 10. Communications.
  - a. Communications Log.\*
  - b. Staff Report.\*
- SCWM 11. Other Business.
  - a. Reminder of appointments due by the [cities of Osseo and Robbinsdale for Shingle Creek](#) and by the [city of Osseo for West Mississippi](#).  
Terms are three years.
- SCWM 12. Adjournment. Z:\Shingle Creek\Meetings\Meetings 2026 SCWM\Jan Agenda Regular meeting .docx
  - \* In meeting packet or emailed    \*\* Supplemental email / Available at meeting
  - \*\*\*Previously transmitted    \*\*\*\* Available on website    ✓ Item requires action



3235 Fernbrook Lane N • Plymouth, MN 55447  
Tel: 763.553.1144 • Fax: 763.553.9326  
Email: judie@jass.biz • Website: www.shinglecreek.org

## REGULAR MEETING MINUTES

January 8, 2026

(Action by the SCWMC appears in blue, by the WMWMC in green and shared information in black.  
\*indicates items included in the meeting packet.)

**I. CALL TO ORDER.** A joint meeting of the Shingle Creek Watershed Management Commission and the West Mississippi Watershed Management Commission was called to order by Shingle Creek Chairman Andy Polzin at 12:48 p.m. on Thursday, January 8, 2026, at Plymouth Community Center, 14800 34th Avenue North, Plymouth, MN.

Present for Shingle Creek: David Vlasin, Brooklyn Center; Steve Antolak, Brooklyn Park; Burt Orred, Jr., Crystal; Chuck Lenthe, Maple Grove; Bob Grant, New Hope; John Roach, Osseo; and Andy Polzin, Plymouth. Not represented: Minneapolis and Robbinsdale.

Present for West Mississippi: David Vlasin, Brooklyn Center; Steve Antolak, Brooklyn Park; Chuck Lenthe, Maple Grove; and John Roach, Osseo. Not represented: Champlin.

Also present: Nate Musial, Brooklyn Park; Steven Touney, Champlin; Jesse Struve and Randy Bergstrom, Crystal; Derek Asche and Shane Awalt, Maple Grove; Nick Macklem, New Hope; James Kelly, Osseo; Talori Dunsworth, Plymouth; Richard McCoy and Jenna Wolf, Robbinsdale; Eric Osterdyk and Grace Neumiller, Stantec; Troy Gilchrist, Town Law Center; Judie Anderson, JASS; Brian Vlach, Three Rivers Park District; and Todd Shoemaker, AE2S.

## II. AGENDAS AND MINUTES.

**A.** Motion by Antolak, second by Grant to approve the **Shingle Creek agenda\*** as presented. *Motion carried unanimously.*

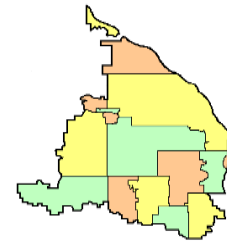
**B.** Motion by Antolak, second by Lenthe to approve the **West Mississippi agenda\*** as presented. *Motion carried unanimously.*

**C.** Motion by Lenthe, second by Roach to approve the **minutes of the December 11, 2025, regular meeting.\*** *Motion carried unanimously.*

**D.** Motion by Lenthe, second by Vlasin to approve the **minutes of the December 11, 2025, regular meeting.\*** *Motion carried unanimously.*

## III. FINANCES AND REPORTS.

**A.** Motion by Orred, second by Antolak to approve the Shingle Creek **January Treasurer's Report\* and claims** totaling \$211,429.18. Voting aye: Vlasin, Antolak, Orred, Lenthe, Grant, Roach, and



Polzin; voting nay: none; absent: Minneapolis and Robbinsdale.

**B.** Motion by Antolak, second by Roach to approve the West Mississippi **January Treasurer's Report\* and claims** totaling \$8,801.05. Voting aye: Vlasin, Antolak, Lenthe, and Roach; voting nay: none; absent: Champlin.

**IV. OPEN FORUM.**

Kelly presented pages 108-109 from an unnamed book depicting the 1961 Central Avenue storm sewer project in Osseo; a 1988 construction project to make Central Avenue more pedestrian-friendly; the 1991 water main replacement; and a brief description of the formation of watershed organizations in the early 1990s. Ostensibly, this was a follow-up to Kelly's comment at the December meeting regarding the City of Osseo's failure to address drainage and erosion issues within and adjacent to the Edinbrook channel where it flows into a pipe under the St. Vincent de Paul Cemetery Mausoleum.

**V. OLD BUSINESS.**

**Mississippi Gateway.** Three Rivers Park District (TRPD) submitted a Partnership Cost Share request to the West Mississippi Commission in 2023. The project would stabilize approximately 2200 LF of Mississippi River shoreline located within the Gateway Regional Park in Brooklyn Park and was approved for the cost-share amount of \$75,000 at the Commission's September 14, 2023, meeting.

In his email to Staff on December 5, 2025, Brian Vlach, TRPD's Sr. Water Resources Manager, provided an update on the project. He indicated that TRPD has executed an LCCMR grant to secure the remaining funds for construction of the project, bids have been received, and a contractor selected. Construction will begin in early January 2026.

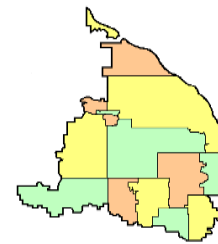
Also included in the December meeting packet was a copy of the Cost-Share Cooperative Agreement\* between the Park District and the Commission. Since the Commission's attorney had not reviewed the agreement, the Commission tabled approval of the agreement to this meeting. Gilchrist reported that he has reviewed and made minor changes to the agreement, which have been agreed to by the Park District. Vlach was also present to provide a further update on the project's progress.

Motion by Antolak, second by Roach to direct the Chair to sign the agreement on behalf of the Commission. *Motion carried unanimously.*

**VI. PROJECT REVIEWS.**

**A. SC2025-08: Joyful Way Church, Brooklyn Park.\*** Construction of an 11,000 SF church building with associated parking and driveway on a 3.3-acre site located at 6340 Zane Avenue North. Following development, the site will be 38 percent impervious with 1.3 acres of impervious surface – an increase of 1.2 acres. A complete project application was received on August 28, 2025. The 60-day review period was extended an additional 60 days by Commission staff. The extended 120-day review period was extended an additional 60 days by request of the applicant.

Commission rules require the site to infiltrate 1.1 inches of runoff from new impervious and reconstructed impervious area within 48 hours. The new and reconstructed impervious area on this site is 1.3 acres, requiring infiltration of 5,053 cubic feet within 48 hours. The applicant demonstrated



through infiltration testing and boring logs that site soils have the capacity to infiltrate the required volume in 48 hours. The bottom of the basin elevation provides three feet of vertical separation from seasonally high groundwater levels. The applicant meets Commission volume control requirements.

To comply with the Commission's water quality treatment requirement, the site must provide treatment so there is no net increase in TP or TSS from pre- to post-development land cover. Meeting the infiltration requirement is considered sufficient to provide a similar level of treatment.

Runoff from the site is proposed to be routed to two infiltration basins located on the eastern edge of the site and the northwest corner of the site. Pretreatment for the basins is provided by a forebay at the upstream end of each basin. The applicant meets Commission water quality treatment requirements.

Commission rules require that site runoff be limited to predevelopment rates for the 2-, 10-, and 100-year, 24-hour, and 100-year, 10-day critical storm event. The majority of runoff from the site drains east to the east infiltration basin via overland flow and proposed storm structures. A central portion of the site drains northwest towards the northwest infiltration basin via overland flow. A west portion of the site drains west towards offsite Zane Ave catch basins via overland flow. The applicant meets Commission rate control requirements.

The erosion control plan includes a rock construction entrance, perimeter silt fence, inlet protection, perimeter control for infiltration basins, rip rap at inlets, stabilization of emergency spillways, and native seed specified on basin slopes. Erosion control plans meet Commission requirements.

The National Wetlands Inventory identifies a wetland (Twin Creek) on the eastern edge of the site. SCWMC is LGU for WCA administration. A Notice of Decision was issued by the LGU to determine wetland boundary delineation, which is included on the proposed site plans. Wetland buffers are provided at a minimum of 20 feet in width and an average of 30 feet in width. The applicant meets Commission wetland requirements.

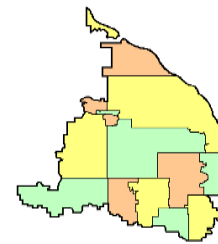
There are no Public Waters on this site. The applicant meets Commission Public Waters requirements.

The low floor elevations of the buildings are at least two feet higher than the high-water elevation of the infiltration basin according to Atlas 14 precipitation. The low floor elevation of the building (868.0) is at least two feet higher than the 100-year flood elevation of the creek (861.3 feet) and infiltration basins (864.7 and 863.0 ft). Grading in the floodplain is proposed and will result in no net fill in the floodplain. The applicant meets Commission floodplain requirements.

The site is not located in a Drinking Water Supply Management Area (DWSMA). The applicant meets Commission drinking water protection requirements.

A public hearing on the project was conducted on October 8, 2025 as part of Planning Commission review of this project, meeting Commission public notice requirements.

A draft Operations & Maintenance (O&M) agreement between the applicant and the City of Brooklyn Park has not been provided.



Motion by Antolak, second by Grant to advise the City of Brooklyn Park that approval of Project 2025-08 is granted with three conditions:

1. Provide a complete O&M agreement between the applicant and the City of Brooklyn Park for all stormwater facilities on the project site.
2. After construction, demonstrate by double ring infiltrometer or witness test that the site can meet the design infiltration rate of 3.24 inches/hour for the east basin and 0.8 inches/hour for the northwest basin.
3. Submit to the City of Brooklyn Park a recordable conservation easement for protection of the wetland buffer strip. The easement shall describe the boundaries of the watercourse or wetland and buffer strips, identify the monuments and monument locations, and prohibit any of the alterations noted below and the removal of the buffer strip monuments within the buffer strip or the watercourse or wetland.

Alterations including building, storage, paving, mowing, plowing, introduction of noxious vegetation, cutting, dredging, filling, mining, dumping, grazing livestock, agricultural production, yard waste disposal or fertilizer application, are prohibited within any buffer strip. Noxious vegetation may be removed as long as the buffer strip is maintained to the standards required by the Commission. Alterations would not include plantings that enhance the natural vegetation or selective clearing or pruning of trees or vegetation that are dead, diseased or posing similar hazards.

*Motion carried unanimously.*

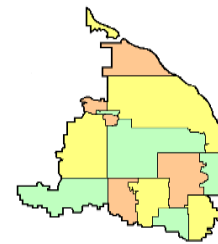
**B. SC2025-10 Crest View Community School, Brooklyn Park.\*** Construction of a Community School on a 15.2-acre site located at 8200 Zane Ave North. The proposed project is the reconstruction of an existing school into a community school with a playground and associated parking. Following development, the site will be 37 percent impervious with 5.56 acres of impervious surface, an increase of 0.88 acres. A complete project application was received on December 8, 2025.

Commission rules require the site to infiltrate 1.1 inches of runoff from new impervious and reconstructed impervious area within 48 hours. The new and reconstructed impervious area on this site is 245,018 ft<sup>2</sup>, requiring infiltration of 22,460 CF within 48 hours. The applicant proposes to construct two infiltration basins that have the capacity to infiltrate the required volume within 48 hours. The applicant meets Commission volume control requirements.

To comply with the Commission's water quality treatment requirement, the site must provide treatment so there is no net increase in TP or TSS from pre- to post-development land cover. Meeting the infiltration requirement is considered sufficient to provide a similar level of treatment.

Runoff from the site is proposed to be routed to two infiltration basins. The applicant meets Commission water quality treatment requirements.

Commission rules require that site runoff be limited to predevelopment rates for the 2-, 10-, and 100-year, 24-hour, and 100-year, 10-day critical storm event. Runoff from the site is controlled by two infiltration basins. Revisions to the hydraulic model are required to determine existing and



proposed rates to Zane and Yates Avenue. The applicant meets Commission rate control requirements.

The erosion control plan includes rock construction entrances, perimeter silt fence, silt fence surrounding infiltration basins, inlet protection, rip rap at inlets, slope checks, and native seed specified on the pond slopes. However, additional perimeter control is required to control offsite discharges. The erosion control plan does not meet Commission requirements; however, this will be addressed as a condition of approval (Condition 5).

The National Wetlands Inventory does not identify any wetlands on site. The applicant meets Commission wetland requirements. There are no Public Waters on this site. The applicant meets Commission Public Waters requirements.

There is no FEMA-regulated floodplain on this site. The low floor elevations of the buildings are at least two feet higher than the high-water elevation of the detention infiltration basins according to Atlas 14 precipitation. The applicant meets Commission floodplain requirements.

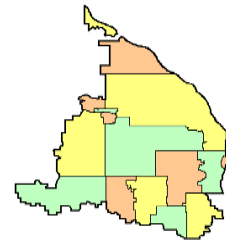
The site is within a High Vulnerability Drinking Water Supply Management Area but outside the Emergency Response Area. Per the MN Stormwater Manual, a higher level of engineering review is required to justify infiltration. This review determines whether infiltrated water could reach a receptor (e.g., a well) within one year – a criterion based on pathogen survival and emergency response time. The applicant has provided documentation that indicates groundwater flows toward two wells (IDs 439000 and 759567) per the Minnesota Well Index. The closest lateral distance to these wells is approximately 2,160 feet. Using the Twin Cities Metropolitan Groundwater Model and Hennepin County Geologic Atlas the applicant estimated a horizontal velocity of 3.72 feet/day, resulting in a one-year travel distance of 1,357 feet. Thus, infiltrated water would take approximately 1.57 years (2,160 ft./1,357 ft./yr.) to reach the nearest well. Additionally, the applicant proposes ripping the bottom 18 inches of the infiltration practices and adding six inches of planting media (80% sand, 20% peat) above the ripped soils. These measures meet Commission drinking water protection requirements.

A public hearing on the project was conducted on November 12, 2025, as part of Planning Commission and City Council review of this project, meeting Commission public notice requirements.

A draft Operations & Maintenance (O&M) agreement between the applicant and the City of Brooklyn Park has been provided.

Motion by Antolak, second by Lenthe to advise the City of Brooklyn Park that approval of Project 2025-10 is granted with five conditions:

1. Demonstrate by field measured infiltration test that the site can meet the design infiltration rate of 0.6 inches/hour.
2. Revise the outlet invert of the 12-inch culvert in the existing conditions HydroCAD model from 838.20' to 868.20' to correspond with Sheet C401.
3. Route Subcatchment T to Pond 1P in the proposed conditions HydroCAD model. The grading shown on Sheet C300 and the proposed conditions drainage map indicate Subcatchment T will discharge to basin 1P rather than 2P as currently modeled.



4. Clarify intent of STMH-21. This structure is a solid grate with a piped outlet to Pond 1P; however, there is no contributing drainage area that is captured by this infrastructure. The previous submittal received on November 25, 2025, showed a connection to catch basins on Yates Avenue pending City design/scope for Yates Avenue reconstruction.

5. Provide down-gradient perimeter control on the east side of the site shown in the Grading and Erosion Control Plan – North (Sheet C-300). Sheet C-300 shows drainage to Yates Avenue.

*Motion carried unanimously.*

## VII. NEW BUSINESS.

A. **SHINGLE CREEK and WEST MISSISSIPPI 2026 WORK PLANS.** In Staff's December 31, 2025, memos\*are listed proposed activities for the Commissions' 2026 Work Plans, organized by Goal Areas identified in the Fourth Generation Plan and as general, routine Commission business. Proposed 2026 Monitoring Plans for each Commission will be presented at next month's meeting.

**Goal 1. Protect, maintain, and improve the water quality and ecological integrity of the water and natural resources within the watersheds and the downstream receiving waters.**

a. Complete the Lake Magda Subwatershed Assessment to identify BMP opportunities as part of the FY24-25 WBIF grant.

b. Manage aquatic invasive species (AIS) in watershed lakes as necessary. Bass Lake, Twin Lakes, and Meadow Lake all have curly-leaf pondweed infestations that have been treated recently.

c. Implement carp removals and population estimate updates in Crystal and Twin Lakes as part of the FY24-25 Watershed Based Implementation Funding (WBIF) grant.

d. Continue partnership with the City of Brooklyn Park and Three Rivers Park District to plan and design the Brookdale Park Natural Channel Phase 1 project, the stream restoration on Shingle Creek from the end point of the Connections project in Brookdale Park to just downstream of Xerxes Avenue.

e. Continue working with the City of Minneapolis in planning for the Minneapolis Shingle Creek Regional Park project.

f. Continue partnering with the City of Maple Grove to implement the Eagle Lake Management Plan, which includes a second dose of alum in 2026 and additional AIS treatments, if necessary.

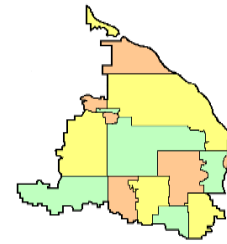
g. Continue partnering with cities on the Twin Lake Management Plan, including the subwatershed assessment and planning for potential internal load management.

h. Continue to partner with the USGS to operate the Queen Avenue monitoring site.

i. Use funding from the Project Maintenance Fund to upkeep past project improvements.

j. Complete the 38th Avenue Outfall special monitoring project.

k. Continue to identify, pursue grant funding for, and implement projects and programs



addressing the bacterial impairment in the Mississippi River.

- l.** Identify boundaries of the untreated areas directly connected to the Mississippi River or other conveyances.
- m.** Partner with the MWMO to undertake monitoring at the 65th Avenue outfall.
- n.** Continue to work with Brooklyn Park and Hennepin County to prepare a follow-up to the Mississippi River stabilization study.
- o.** Complete the TH 252 subwatershed assessments for the Evergreen/70th Avenue and Meadowood areas.
- p.** Stay abreast of other regional and state TMDLs.

**Goal 2. Reduce stormwater runoff rates and volumes to limit flood risk, protect conveyance systems, protect surficial groundwater, and reduce or mitigate impacts that have already occurred.**

- a.** Complete reviews of development and redevelopment projects as necessary.

**Goal 3. Educate and engage all stakeholders in the watersheds on surface water issues and opportunities.**

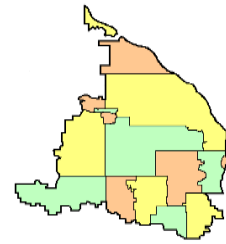
- a.** Participate in the West Metro Water Alliance joint education and outreach group.
- b.** Partner with Hennepin County and other local watersheds to fund and provide guidance to the shared Education and Outreach Coordinator.
- c.** Work with the shared Education and Outreach Coordinator to offer customized shoreline restoration workshops as part of an effort to enhance outreach to lake associations.
- d.** Complete and implement a Joint Chloride Management Plan for the watershed with Shingle Creek, West Mississippi, and Elm Creek WMCs.
- e.** Complete the migration and update of the Commissions' and WMWA's websites.
- f.** Develop a format and process for incorporating documentation of potential impacts to and outreach to underrepresented populations to increase engagement and help improve equitable outcomes.

**Goal 4. Anticipate and proactively work to withstand adverse impacts from changing environmental and climate conditions.**

- a.** Consider applying for an MPCA Community Resilience grant, if available, in 2026 to model future precipitation scenarios in the watershed.

**Continue ongoing administration and programming.**

- a.** Conduct routine Commission lake water quality monitoring and aquatic vegetation monitoring on Lake Magda and Ryan Lake, and project-associated monitoring on Eagle and Pike Lakes.
- b.** Conduct Commission routine flow and water quality monitoring on Shingle and Bass Creeks at established monitoring sites.



- c. Sponsor volunteer lake monitoring through Metropolitan Council's Community Assisted Monitoring Program (CAMP) on up to four lakes.
- d. Conduct Commission routine flow and water quality monitoring at the Environmental Preserve site.
- e. If available in 2026, sponsor volunteer stream monitoring through Hennepin County Watershed Connections.
- f. Prepare an annual water quality report.
- g. Solicit cost-share projects from member cities funded from the Cost Share Fund and the annual \$100,000 levy and the Partnership Cost Share Fund and the annual \$50,000 levy.
- h. Solicit cost-share projects from member cities funded from the Cost Share Fund and the annual \$50,000 levy.
- i. Review feasibility studies for 2026 proposed capital projects, undertake Plan Amendments, hold public hearings, order projects, and certify levies.
- j. Prepare a 2027 annual budget.
- k. Invite three guest speakers to make lunchtime water resources presentations.

Motion by Antolak, second by Orred to approve the 2026 Shingle Creek Work Plan with appropriate minor adjustments to the timeline. *Motion carried unanimously.*

Motion by Lenthe, second by Antolak to approve the 2026 West Mississippi Work Plan with the addition of the Minneapolis Park project to the goals and appropriate minor adjustments to the timeline. *Motion carried unanimously.*

**B. MISSISSIPPI RIVERBANK STABILIZATION STUDY.\*** Staff have created one- and two-page summary sheets explaining conditions along the riverbank and describing some typical stabilization methods along with a range of costs for each project. The sheets will be used for educational purposes and as handouts to landowners, who are encouraged to contact the Commission if they would like to pursue a project on their properties. The Commissioners approved both versions of the sheets, which will be uploaded to the website.

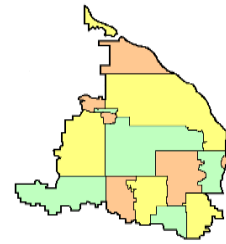
**VIII. GRANT OPPORTUNITIES.**

**IX. EDUCATION AND PUBLIC OUTREACH.**

**A. West Metro Water Alliance (WMWA).** Included in the meeting packet was an update from Grace Barcelow,\* Hennepin County Environment and Energy Conservation Specialist, [grace.barcelow@hennepin.us](mailto:grace.barcelow@hennepin.us).

**B. West Metro Water Alliance (WMWA)** will meet via Zoom at 8:30 a.m., Tuesday, January 13, 2026. The link to join:

<https://us02web.zoom.us/j/922390839?pwd=TkIBQW1ZNXVXdzdtTDBTSDZkZmZuQT09>



C. A **WMWA Strategic Planning Meeting** is scheduled to follow the regular WMWA meeting on January 13.

**X. COMMUNICATIONS.**

A. **January Communications Log.\*** No action required.

B. **January Staff Report.\***

1. **38th Avenue Outfall Monitoring.** Staff worked with Tech Sales to confirm the equipment quote for 38th Ave Outfall monitoring and to order equipment before EOY 2025. Staff will meet in mid-January to discuss initial tasks for the project and contact the City of Robbinsdale with any needs to prepare for equipment installation in Spring 2026.

2. **Mississippi Riverbank Stabilization Study.** Staff completed a summary memo explaining the Mississippi Riverbank Stabilization Study in simplified terms for educational purposes and distribution to landowners. One- and two-page versions of the summary were delivered to the Commission at today's meeting. (Item VII.B.)

3. **Joint Chloride Management Plan.** Staff are working with TAC members to identify priority areas within the watersheds to target implementation actions, such as large parking lots, agricultural lands, or drainage areas of chloride impaired/threatened waterbodies. Members are asked to submit high priority chloride management areas in their region to [katie.kemmitt@stantec.com](mailto:katie.kemmitt@stantec.com). Stantec is also developing a survey for road authorities to understand their current chloride practices, challenges, and opportunities.

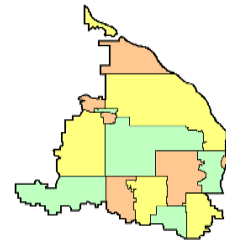
4. **Twin Lakes SWA.** Staff are comparing load reductions needed to meet water quality standards in Ryan, Middle, and Upper Twin Lakes. Lower Twin Lake already meets state Water Quality standards. Staff pulled and analyzed all relevant WQ data (TP, Secchi, and Chl-*a*) for each lake to show annual variability. They also downloaded and analyzed variability of TP by depth in all of the lakes to show evidence for internal loading of TP from the sediments.

The 639W Wetland Feasibility Report is being finalized. The Lake Response Model (LRM) has been updated to include 2025 internal loading rates for all the lakes and TP watershed loading based on updated P8 model. Other inputs used in the LRM were based on the 1999 Lake Response Model published in the original TMDL. The 2025 updated watershed loads better characterize each lake within the model at this time. The updated lake response model estimates for surface TP in each lake are performing well against surface TP data collected from 2010-2025. An alum treatment scenario is being modeled for Upper Twin Lake to characterize reductions in internal TP loading and its impact on surface concentrations. Staff are currently identifying potential BMP locations.

5. **Grant, Cost-Share and Fund Balances** are summarized on the last page of the report.

**XI. OTHER BUSINESS.**

A. The Commission has received notice that the middle school will no longer operate at the **FAIR School Crystal Campus**. Last March, the Commission approved a Trust for Public Land/FAIR School application request of \$10,000 for an outdoor classroom/rain garden project, with funds coming from the



Commission's Partnership Cost Share Fund. The proposed project also included seating, community gathering space, native plantings, and accessible pathways, play areas, and education signage. The focus of the project is on outdoor and environmental education, specifically water conservation due to the school backyard containing Gaulke Pond.

In her January 7, 2026, email Kayla Westerlund, Program Manager at the Trust, reported that the rain garden was installed last fall and the Trust is awaiting the final invoice from the landscaper in order to seek reimbursement from the Commission. She indicated a different academic program will take over the FAIR building, providing an alternative learning high school program. Robbinsdale School District will continue to own and operate the building and maintain and steward the schoolyard and rain garden.

**B.** The members are reminded that **appointments are due** by the cities of Osseo, Plymouth and Robbinsdale for Shingle Creek and by the City of Osseo for West Mississippi. Terms are for three years beginning February 1, 2026. Appointments have been received from the City of Plymouth.

**Election of officers** will occur at the February meeting. Current officers are:

Chair:	Andy Polizn	Gerry Butcher
Vice Chair:	Wayne Sicora	David Mulla
Secretary:	Karen Jaeger	Karen Jaeger
Treasurer:	Burt Orred, Jr.	Karen Jaeger

**C.** There being no further business, the meeting was adjourned at 1:50 p.m.

Respectfully submitted,

Judie A. Anderson  
Recording Secretary  
JAA:tim

Z:\Shingle Creek\Meetings\Meetings 2026 SCWM\January 8 2026 meeting minutes.docx

**SHINGLE CREEK WATERSHED MANAGEMENT COMMISSION****PROJECT REVIEW SC2026-001:** Arbor Lakes Phase 2

**Owner:** Boston Scientific Corp  
**Company:** Boston Scientific Corp  
**Address:** 300 Boston Scientific Way Marlborough, MA 01752

**Engineer:** Chad Lockwood, P.E.  
**Company:** Ryan Companies  
**Address:** 533 South Third Street, Suite 100 Minneapolis, MN 55415

**Phone:** 612-492-4204  
**Email:** chad.lockwood@ryancompanies.com

**Purpose:** Construction of four-story building, associated parking, and realignment of 73<sup>rd</sup> Place to Fountains Drive on 88 acres.

**Location:** 1 Boston Scientific Way Maple Grove, MN 55369 (Figure 1).

- Exhibits:**
1. Project review application and project review fee of \$2,500, dated 1/9/26, received 1/20/26.
  2. Site plan, preliminary plat, grading (Figure 2), utility, erosion control, and landscaping plans (65 Sheets), by Ryan Companies dated 1/28/26, received 1/29/26.
  3. Hydrologic calculations (166 Sheets), by Ryan Companies, dated 1/29/26, received 1/29/26.
  4. Arbor Lakes Phase 2 Geotechnical Report, by Braun Intertec, dated 11/20/26, received 1/29/26.
  5. Digital Existing and Proposed HydroCAD Models, by Ryan Companies, dated 1/29/26, received 1/29/26.
  6. Digital MIDS Model, by Ryan Companies, dated 1/29/26, received 1/29/26.
  7. MPCA Simple Estimator Worksheet, by Ryan Companies, dated 1/29/26, received 1/29/26.
  8. Phase I Infiltration Test Results, by Braun Intertec, dated 1/29/26, received 1/29/26.

- Findings:**
1. The proposed project is the second phase of the Boston Scientific Campus; the first phase was reviewed under SC23-07: Black Bear and there was another review on the same campus under SC25-09: Boston Scientific Utility Relocations. SC26-01: Arbor Lakes Phase 2 evaluates the entire project including impervious areas and BMPs in SC23-07, the proposed roadways and building submitted with this application, and future expansion of undeveloped lots (assumed 78% impervious). The total site area is approximately 88 acres. Following development, the site will be 71 percent impervious with 62.9 acres of impervious surface, an increase of 58.4 acres.

2. The complete project application was received on 1/20/2026. To comply with the 60-day review requirement, the Commission must approve or

**SC2026-001: Arbor Lakes Phase II**

deny this project no later than the 3/12/2026 meeting. Sixty calendar-days expires on 3/21/2026.

3. Commission rules require the site to infiltrate 1.1 inches of runoff from new impervious and reconstructed impervious area within 48 hours. The site impervious was tabulated based on an assumed 78% impervious with the exclusion of BMP areas. The new and reconstructed impervious area on this site is approximately 62.9 acres, requiring infiltration of 251,160 cubic feet within 48 hours.

The site is located within the Maple Grove Gravel Mining Area (GMA, Figure 3). The 2025 GMA infiltration credit system update resulted in 140.0 acres of impervious credit remaining in the GMA (project review SC2025-02). The project is within the GMA "undeveloped area". The applicant proposes to provide partial credit through an infiltration bench that has the capacity to infiltrate 100,466 ft<sup>3</sup> of volume within 48 hours (Table 1). The applicant requires an additional 150,694 ft<sup>3</sup> (251,160 ft<sup>3</sup> – 100,466 ft<sup>3</sup>) which is equivalent to 37.74 acres of remaining new and reconstructed impervious area. The City has allowed the applicant to use 37.74 acres of GMA credits to satisfy Commission volume and water quality standards. This reduces the 140.0 acres of impervious credit by 10.4 acres to 129.6 acres of impervious credit. Due to the conservative impervious assumption made for the development, the City may revise the total post-construction impervious to recover impervious credits.

The applicant meets Commission volume control requirements.

**Table 1. Proposed volume retention through infiltration (ft<sup>3</sup>).**

<b>Volume Retention Required (ft<sup>3</sup>)</b>	<b>BMP</b>	<b>Volume Retention Provided (ft<sup>3</sup>)</b>	<b>1.1-inch Runoff (ft<sup>3</sup>)</b>	<b>2.5-inch Runoff (ft<sup>3</sup>)</b>
Infiltration Bench	Practice	<b>100,466</b>	121,387	275,880
	Total	<b>100,466</b>		

4. To comply with the Commission’s water quality treatment requirement, the site must provide treatment so there is no net increase in TP or TSS from pre- to post-development land cover. Meeting the infiltration requirement is considered sufficient to provide a similar level of treatment.

The north portion of the site associated with Phase 2 is routed to a NURP pond. This NURP pond and the remainder of the site are routed to an expanded NURP pond and infiltration bench. The applicant has provided existing load calculations using the MPCA Loading calculator and a MIDS model for proposed conditions (Table 2). The applicant meets Commission water quality treatment requirements.

**Table 2. Water Quality Treatment Modeling Results.**

	Existing	Proposed
Annual Phosphorus Load (lbs.)	22.1	16.6
Annual TSS Load (lbs.)	8,520	634.4

5. Commission rules require that site runoff is limited to predevelopment rates for the 2-, 10-, and 100-year, 24-hour, and 100-year, 10-day

**SC2026-001: Arbor Lakes Phase II**

critical storm event. Runoff from the site is routed through a chain of dry ponds, a NURP pond, to a second NURP pond with an Infiltration Bench before discharging to east. The applicant meets Commission rate control requirements (Table 3).

**Table 3. Runoff from site (cfs).**

Drainage Area	2-year event		10-year event		100-year event		100-year 10-day event	
	Pre-	Post-	Pre-	Post-	Pre-	Post-	Pre-	Post-
I-94 Ditch	12.14	4.05	23.12	8.00	34.26	17.10	6.29	0.57
Project Libre	26.00	5.70	46.93	9.05	96.77	20.57	21.76	5.41

6. The erosion control plan includes rock construction entrances, perimeter silt fence/biolog, silt fence surrounding detention ponds/infiltration basins, inlet protection, rip rap at inlets, slope checks, and native seed specified on the pond slopes. The erosion control plan meets Commission requirements.
7. Permit SC23-07: Black Bear addressed Commission Wetland requirements for the site. The following statement is taken from the approved permit for SC23-07. The National Wetlands Inventory identifies one wetland in the center of the site. The City of Maple Grove is the LGU for Wetland Conservation Act administration and applied for a no-loss application for this and other wetlands within the GMA. The Technical Evaluation Panel (TEP) reviewed the application and determined "...based on aerial photo review from 1940-2023 that the GMA undergoes extensive excavation, dewatering, stockpiling, and reclamation processes and that basins in the GMA historically and currently undergo conversion and manipulation and meet the definition of...'nonwetland'." The applicant meets Commission wetland requirements.
8. There are no Public Waters on this site. The applicant meets Commission Public Waters requirements.
9. There is no FEMA-regulated floodplain on this site. The low floor elevations of the buildings are at least two feet higher than the high-water elevation of the detention ponds and dry basins according to Atlas 14 precipitation. The applicant meets Commission floodplain requirements.
10. The site is not located in a Drinking Water Source Management Area (DWSMA). The applicant meets Commission drinking water protection requirements.
11. A public hearing on the project was conducted on May 30, 2023 as part of Planning Commission and City Council review of this project, meeting Commission public notice requirements.
12. A draft Operations & Maintenance (O&M) agreement between the applicant and the City of Maple Grove has been provided for a portion of the project site; however, amendments are required to include the additional BMPs onsite.
13. A Project Review Fee of \$2,500 has been received.

**SC2026-001: Arbor Lakes Phase II**

**Recommendation:** Approval subject to the following conditions:

- 1) Provide an updated O&M agreement between the applicant and the City of Maple Grove for the additional stormwater facilities proposed as a part of Phase 2 construction.
- 2) Revise SWPPP Phasing sequence such that the surface infiltration systems are not excavated to final grade until the contributing drainage area has been constructed and fully stabilized.

Stantec Inc.  
Engineers for the Commission

Eric Osterdyk, P.E.

2/2/2026

**Figure 1. Site location.**



SC2026-001: Arbor Lakes Phase II

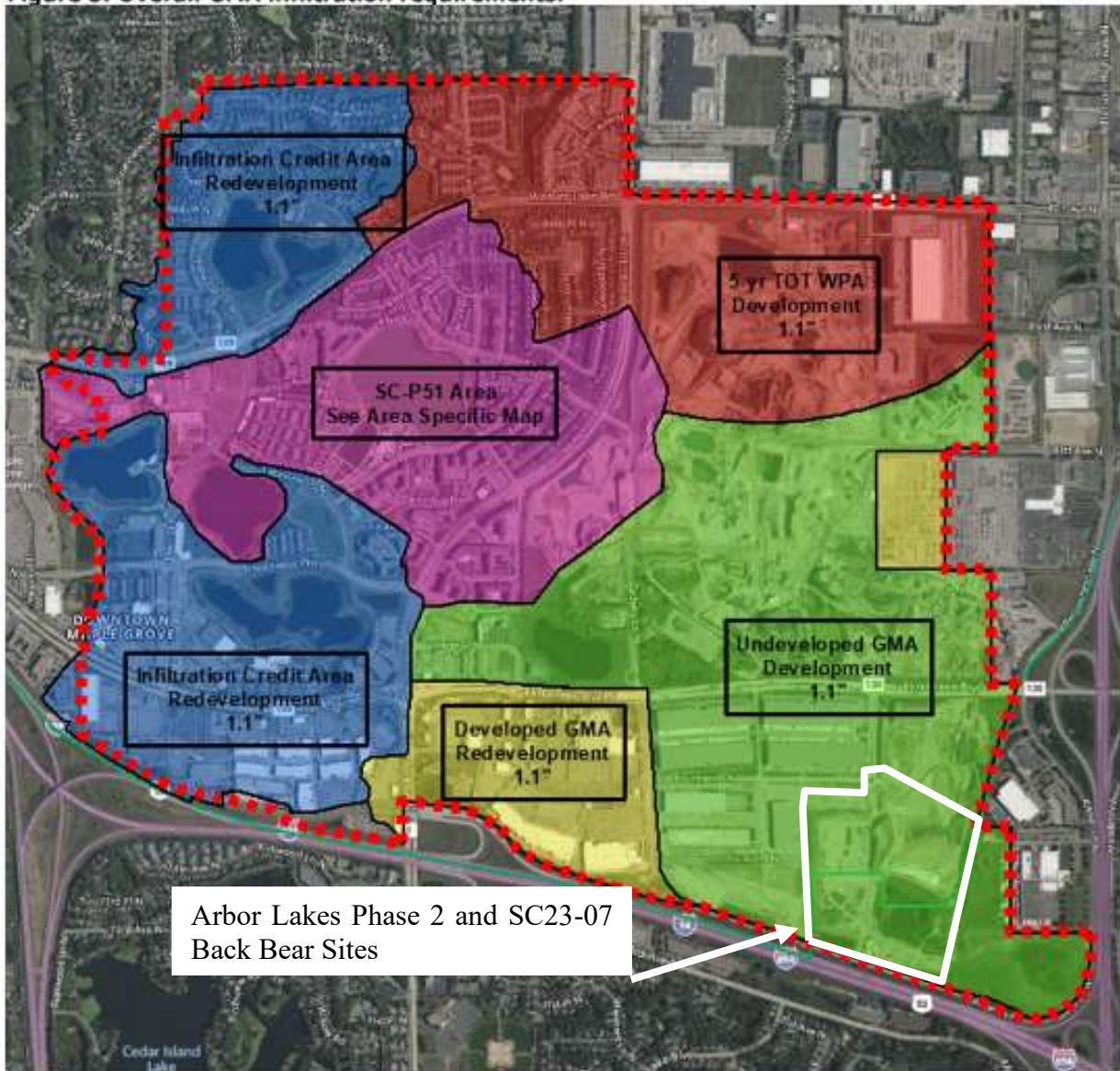
Figure 2. Site grading plan.



**SC2026-001: Arbor Lakes Phase II**

**Figure 3. Site in Undeveloped GMA.**

**Figure 3. Overall GMA infiltration requirements.**



**To:** Shingle Creek/West Mississippi WMO Commissioners

**From:** Eric Osterdyk, P.E.  
Grace Neumiller  
Diane Spector

**Date:** February 4, 2026

**Subject:** 2025 Annual Progress Review

**Recommended  
Commission Action**

Review, discuss, and accept the attached 2025 Annual Progress Review.

The Fourth Generation Plan, adopted in 2023, states that the Commissions will annually review progress toward Fourth Generation Plan goals, and that this evaluation will become part of the Annual Report. There is no specific format for such an annual review.

The purpose of the annual review is first to determine progress towards the goals, and second, to be sure that the Commissions stay on track to reach them. The annual review is also an opportunity to discuss whether the goals and actions in the Plan still make sense, or if they should be considered for modification or enhancement, perhaps to add in new priorities. Ideally, this annual review is also an opportunity to start thinking about next year's work plan.

**Review of Progress**

In December 2025, staff presented an overview of 2025 Commission activities. Attached is a matrix showing the Fourth Generation Plan goals and progress towards reaching each goal, similar to the format of the annual progress review used in previous years. These findings will be reported in your 2025 Annual Report to BWSR.

**2025 Highlights**

Some non-routine highlights of the past year include:

- SCWM Commissions received a BWSR grant to begin working on a Joint Chloride Management Plan with the Elm Creek Watershed Management Commission, as well as other initiatives such as partnering on Low Salt Design Standards and enhanced outreach through WMWA.
- In partnership with WSB and the City of Robbinsdale, the Commission completed a fifth year of carp removals on Crystal Lake with Watershed Based Implementation Funding (WBIF).
- The Shingle Creek Commission agreed to partner with the Cities of Minneapolis and Robbinsdale for special monitoring of the 38<sup>th</sup> Ave Outfall into Crystal Lake. The work order was approved, and monitoring equipment was ordered.
- SCWM staff presented a presentation on Meadow Lake adaptive in-lake management at the 2025 Minnesota Water Resources Conference, sharing Commission water quality improvements in a shallow, urban impaired waterbody with hundreds of researchers from across the country.
- The Bass Creek Feasibility Study was completed to evaluate conditions between TH169 and 63<sup>rd</sup> Avenue in the Cities of Brooklyn Park and New Hope. Stabilization of 2,900 LF with hard armor and buffer reestablishment was recommended in September for construction in 2026.

- Eleven project reviews were completed between both Shingle Creek and West Mississippi Commissions to enforce watershed rules and standards for development and redevelopment.
- The Commissions adopted a revised policy for infiltration credits in the Maple Grove Gravel Mining Area.
- SCWM staff completed the Shingle and Bass Creeks Biotic and Dissolved Oxygen TMDL 5-year Review. Stream biotic integrity and dissolved oxygen measurements have not shown improvement.
- The Shingle Creek and West Mississippi Watershed Management Commissions published an RFP to solicit vendors for an update to the Commission website, along with Elm Creek and Pioneer Sarah Creek, and Skol was awarded the contract. Shingle Creek also agreed to act as the fiscal agent for WMWA's website update, and Avallo was awarded the contract.

### CAPITAL AND COST SHARE PROJECTS

- The SCWMC worked with the City of New Hope to conduct ongoing monitoring on Meadow Lake with Clean Water grant funds for monitoring and adaptive management. In 2022, Meadow Lake received a drawdown; in 2023, an herbicide treatment for curly-leaf pondweed and an alum treatment for sediment nutrient inactivation, as well as vegetation, sediment, and water quality monitoring; in 2024, a vegetation survey; and in 2025, an herbicide treatment for curly-leaf pondweed. This is a multi-year program, and future aquatic vegetation management activities will continue in coming years.
- The SCWMC continued the Shingle Creek Brookdale Park Natural Channel Planning and 30% Design project. The SCWMC engaged with stakeholders (City of Brooklyn Park, Three Rivers Park District, and MN DNR) to discuss project and funding options to improve vegetation enhancements, wood stabilization, pool and riffle sequencing, and remnants to aid habitat and water quality improvements of Shingle Creek in Brookdale Park.
- The SCWMC worked with the City of Robbinsdale and WSB to undertake a fifth year of carp removals on Crystal Lake. The Crystal Lake Management Plan was completed in 2024 and transitioned from capital project to ongoing maintenance in 2025.
- The WMWMC worked with the City of Brooklyn Park and Hennepin County to undertake an updated and more detailed assessment of conditions and potential stabilization work along the Mississippi River streambank. The Mississippi Riverbank Stabilization Feasibility Study was completed along with several informational pamphlets for residents to conduct streambank stabilization.
- The SCWMC made progress on the Eagle Lake Management Plan. Following the Eagle Lake Subwatershed Assessment completed in 2024, a second alum treatment will be completed on Eagle Lake in October 2026 (with the first in October 2024). This is a multi-year Plan, with additional actions to be completed in future years.
- The Twin Lakes carp study was completed, and the Twin Lakes Subwatershed Assessment and Lake Management Plan was initiated. Staff analyzed lake water quality data, completed an external loading evaluation, finalized the 639W Wetland Feasibility Report, and updated the Lake Response Model (LRM) with internal loading rates.
- The Bass Creek (TH169 to 62nd Ave) Feasibility Study was completed, and levy funds were certified for construction in 2026 or 2027.

### GRANTS

- The Board of Water and Soil Resources awarded a \$47,455 Clean Water Fund Accelerated Implementation Grant for the Joint Chloride Management Plan to SCWMC and WMWMC, and the Elm Creek WMC. This \$52,200 project will be a coordinated plan of specific goals and actions for chloride management in the three watersheds, 14 cities and other stakeholders and will be complete by 2027. In 2025, work was begun on the Joint Chloride management plan, including meeting with stakeholders and TAC members to identify high priority CI management areas within the watersheds to target implementation actions, such as large parking lots, agricultural lands, or drainage areas of CI-impaired or threatened waterbodies.
- In late 2025, SCWM staff applied for four MN DNR Invasive Aquatic Plant Management Grants to support herbicide treatments in Eagle, Pike, Lower Twin, and Meadow Lakes. Staff will be notified of grant receipt in late February 2026.
- The SCWMC and WMWMC Watershed Based Implementation Funding (WBIF) Convene Groups allocated grant funds to the Commissions. In 2024-2025, \$191,000 was awarded to Shingle Creek, and \$152,000 was awarded to West Mississippi. The Grant will run through December 2027.
- The MPCA awarded a Planning grant in 2024 to the SCWMC for the Colorado Avenue Infiltration Trench Feasibility Study, totaling \$20,000 through June 30, 2025.

The following tables outline the goals guiding the Fourth Generation Plan. Strategies for addressing each of the four goals were described in the Plan. Progress towards each strategy is described in the tables, as well as the current status and future actions.

Goal 1: Protect, maintain, and improve the water quality and ecological integrity of the water and natural resources within the watersheds and the downstream receiving waters.

Goal 1 Strategies	2025 Actions	Overall Progress	Moving Forward	Status
Manage the surface water resources of the watershed to meet or exceed state standards.	<ul style="list-style-type: none"> <li>- CLP treatment applied to Eagle and Pike Lakes</li> <li>- Carp management on Crystal Lake</li> <li>- SAV surveys on various lakes</li> <li>- Herbicide treatment on Meadow Lake</li> </ul>	Success is variable. Meadow Lake water clarity and chl-a levels improved while nuisance CLP persists. Alum treatments for Bass and Pomerleau completed in 2019 and 2020 and lakes now meets state standard. Schmidt, Lower Twin, and Ryan have all been removed from the 303(d) list.	<ul style="list-style-type: none"> <li>- Second dose of alum treatment scheduled in 2026 for Eagle and Pike Lakes</li> <li>- Continue to implement in-lake and watershed-level load-reduction projects as funding and opportunities arise.</li> </ul>	Ongoing
Implement load reduction actions sufficient to achieve state water quality standards in Eagle, Crystal, and Middle Twin Lakes.	<ul style="list-style-type: none"> <li>- Monitored water quality and vegetation on Eagle and Pike lakes</li> <li>- Eagle Lake and Pike Lake management plan underway</li> <li>- Invasive carp removals on Crystal Lake</li> <li>- Twin Lakes SWA underway</li> <li>- Fish survey completed on Twin Lakes</li> </ul>	Carp removals and alum treatments in Crystal Lake have improved internal loading conditions. Carp population survey completed on Crystal Lake. Eagle Lake alum treatment data show improved water clarity.	<ul style="list-style-type: none"> <li>- Assess second alum treatment efficacy on Eagle and Pike Lakes</li> <li>- Routine monitoring on Magda and Ryan</li> <li>- Complete Twin Lakes SWA &amp; Mgmt PPlan</li> <li>- Conduct special monitoring of 38th avenue outfall into Crystal Lake.</li> </ul>	Ongoing
Make progress toward achieving the state standards in the other lakes and streams in the watersheds.	<ul style="list-style-type: none"> <li>- Routine Shingle Creek and West Mississippi monitoring</li> <li>- Completed 5-year performance review for Bass and Shingle Creek Biotic and DO TMDL</li> </ul>	Engaged with stakeholders, City of Brooklyn Park, Three Rivers Park District, and MN DNR to discuss project and funding options to improve vegetation enhancements, wood stabilization, pool and riffle sequencing, and	Continue to implement load-reduction projects as funding and opportunities arise.	Ongoing

	<ul style="list-style-type: none"> <li>- Mississippi Riverbank stabilization study project completed</li> </ul>	<p>remeanders to aid habitat and water quality improvements of Shingle Creek in Brookdale Park.</p>		
<p>Administer rules and standards requiring new development and redevelopment to control the loading of pollutants from their sites.</p>	<ul style="list-style-type: none"> <li>- Eleven project reviews completed</li> <li>- Bass Creek Feasibility Study completed.</li> </ul>	<p>Rules and Standards have been updated regularly and continue to be enforced.</p>	<ul style="list-style-type: none"> <li>- Continue enforcing Rules and Standards.</li> <li>- Execute cooperative agreement with the City of Brooklyn Park and proceed with final design.</li> <li>- Consider adding Colorado Avenue infiltration project to future SCWMC CIP.</li> </ul>	<p>Ongoing</p>
<p>Maintain as feasible no net loss of wetland acreage and functions and values.</p>	<ul style="list-style-type: none"> <li>- N/A</li> </ul>	<p>The Commission or delegated cities enforces the Wetland Conservation Act (WCA) for development in the watershed.</p>	<p>Continue to enforce WCA.</p>	<p>Completed</p>

Goal 2: Reduce stormwater runoff rates and volumes to limit flood risk, protect conveyance systems, protect surficial groundwater, and reduce or mitigate impacts that have already occurred.

Goal 2 Strategies	2025 Actions	Overall Progress	Moving Forward	Status
Maintain the existing 100-year flood profile throughout the watersheds.	- 11 project reviews completed	Rules and Standards require 100-year runoff rates to not exceed predevelopment rates	Continue enforcing Rules and Standards	Ongoing
Administer rules and standards requiring new development and redevelopment to control the rate and volume of runoff from their sites.	- 11 project reviews completed	Rules and Standards have been updated regularly and continue to be enforced.	Continue enforcing Rules and Standards	Ongoing
Work with Hennepin County to identify the proper jurisdiction for Shingle Creek, where currently designated as County Ditch #13, that provides the most consistent support and protection for the resource	- N/A	Considered during development of Fourth Generation Plan.	Will reconsider as requested.	Complete
Work in cooperation with Hennepin County in the development and implementation of local and regional groundwater protection strategies.	- N/A	Not yet completed	Will consider opportunities as they arise.	Ongoing

Goal 3: Educate and engage all stakeholders in the watersheds on surface water issues and opportunities.

Goal 3 Strategies	2025 Actions	Overall Progress	Moving Forward	Status
Operate a public education and outreach program that meets the NPDES Phase II education requirements for the member cities, with special emphasis on topics such as chloride, bacteria/pet waste, and nutrient management.	<ul style="list-style-type: none"> <li>- Hennepin County shared education and outreach coordinator conducting ongoing engagement.</li> <li>- Shared coordinator develops monthly educational “media kits” for use by the Commission and member cities.</li> <li>- Shared coordinator conducts smart salting outreach to various communities.</li> <li>- Initiated Commission website development process.</li> </ul>	Shingle Creek and West Mississippi partner with Bassett Creek and Elm Creek and other agencies and nonprofits to provide education and outreach through the West Metro Water Alliance (WMWA) and fund a shared education and outreach coordinator at Hennepin County. An annual report is provided to the member cities for the NPDES annual report.	Continue WMWA partnership to enhance education and outreach opportunities and common messaging. Participate in WMWA Strategic Planning initiatives.	Ongoing
Provide supplemental education and outreach engagement on TMDL and other topics of interest to various stakeholders, including ongoing outreach to lake associations.	<ul style="list-style-type: none"> <li>- Hennepin County shared education and outreach coordinator planned workshops for lakeshore restoration</li> </ul>	Staff attend lake association and city meetings as requested.	Continue engagement with stakeholders as projects arise. Provide support to City staff as requested.	Ongoing
Incorporate equity principles of diversity, equity, inclusion, and access into watershed programs and projects.	<ul style="list-style-type: none"> <li>- SCWM funded FAIR school rain garden installation at Brooklyn Center Elementary School.</li> </ul>	- N/A	Work towards developing a template for reviewing projects for diversity, equity, and inclusion aspects.	Ongoing

Goal 4: Anticipate and proactively work to withstand adverse impacts from changing environmental and climate conditions.

Goal 4 Strategies	2025 Actions	Overall Progress	Moving Forward	Status
Model the potential impacts of a non-static climate on water resources with the best available predictive data.	- N/A	Completed HUC8 model under Third Generation Plan. New flood maps are still in development by FEMA/DNR.	Use existing model to evaluate future scenarios, as appropriate.	Ongoing
Quantify and qualitatively assess risk and evaluate and implement responses for mitigation	- N/A	Completed HUC8 model under Third Generation Plan. New flood maps are still in development by FEMA/DNR. Several completed stream restoration/ stabilization projects contribute to watershed resilience.	Will be completed as future scenarios are modeled.	Ongoing
Collaborate with other agencies and organizations on joint efforts to manage impacts both locally and regionally.	- N/A	N/A	Participate in joint efforts as available.	Ongoing
Develop strategies to appropriately manage future impacts.	<ul style="list-style-type: none"> <li>- Accelerated Implementation Grant for the Joint Chloride Management Plan project underway.</li> <li>- Used WBIF funding from Convene Group to adaptively manage impaired lakes.</li> </ul>	Completed HUC8 model under Third Generation Plan. New flood maps are still in development by FEMA/DNR. Several completed stream restoration/ stabilization projects contribute to watershed resilience.	<ul style="list-style-type: none"> <li>- Continue to explore opportunities to increase watershed resilience. Develop Joint Chloride Mgmt Plan in collaboration with SC, WM, and EC watersheds.</li> </ul>	Ongoing

**To:** Shingle Creek/West Mississippi WMO Commissioners  
**From:** Eric Osterdyk, PE  
**Date:** February 4, 2026  
**Subject:** 2026 SC & WM Work Plan Approval Cover Memo

<b>Recommended Commission Action</b>	For your information
--------------------------------------	----------------------

At the January 2026 SCWM Commission meeting, staff presented the 2026 Work Plans for Shingle Creek and West Mississippi Watershed Management Commissions. The Commissions approved the work plans on the condition that the following edits were made:

1. Shingle Creek Work Plan:
  - a. Remove empty gray rows from Work Plan schedule table
2. West Mississippi Work Plan:
  - a. Add Minneapolis Shingle Creek Regional Park Planning to the West Mississippi Work Plan and schedule table

The approved edits were completed, and the finalized Shingle Creek and West Mississippi Work Plans are included below for your review.

**To:** Shingle Creek WMO Commissioners

**From:** Eric Osterdyk, P.E.  
Grace Neumiller

**Date:** January 8, 2026

**Subject:** Final 2026 Work Plan

The following are approved activities for the 2026 Shingle Creek Watershed Management Commission Work Plan, organized by Goal Areas identified in the Fourth Generation Plan and as general, routine Commission business. These activities were approved at the January 2026 Commission meeting. There are routine, ongoing activities as well as some Commission-funded construction projects expected. Note that we will bring a proposed 2026 Monitoring Plan to the Commission in February, which will provide additional details. Activities in calendar form are attached.

**Goal 1. Protect, maintain, and improve the water quality and ecological integrity of the water and natural resources within the watersheds and the downstream receiving waters.**

- a. Complete the Lake Magda Subwatershed Assessment to identify BMP opportunities as part of the FY24-25 WBIF grant.
- b. Manage aquatic invasive species (AIS) in watershed lakes as necessary. Bass Lake, Twin Lakes, and Meadow Lake all have curly-leaf pondweed infestations that have been treated recently.
- c. Implement carp removals and population estimate updates in Crystal and Twin Lakes as part of the FY24-25 Watershed Based Implementation Funding (WBIF) grant.
- d. Continue partnership with the City of Brooklyn Park and Three Rivers Park District to plan and design the Brookdale Park Natural Channel Phase 1 project, the stream restoration on Shingle Creek from the end point of the Connections project in Brookdale Park to just downstream of Xerxes Avenue.
- e. Continue working with the City of Minneapolis in planning for the Minneapolis Shingle Creek Regional Park project.
- f. Continue partnering with the City of Maple Grove to implement the Eagle Lake Management Plan, which includes a second dose of alum in 2026 and additional AIS treatments, if necessary.
- g. Continue partnering with cities on the Twin Lake Management Plan, including the subwatershed assessment and planning for potential internal load management.
- h. Continue to partner with the USGS to operate the Queen Avenue monitoring site.
- i. Stay abreast of other regional and state TMDLs.
- j. Use funding from the Project Maintenance Fund to upkeep past project improvements.
- k. Complete the 38<sup>th</sup> Avenue Outfall special monitoring project.

**Goal 2. Reduce stormwater runoff rates and volumes to limit flood risk, protect conveyance systems, protect surficial groundwater, and reduce or mitigate impacts that have already occurred.**

- a. Complete reviews of development and redevelopment projects as necessary.

**Goal 3. Educate and engage all stakeholders in the watersheds on surface water issues and opportunities.**

- a. Participate in the West Metro Water Alliance joint education and outreach group.
- b. Partner with Hennepin County and other local watersheds to fund and provide guidance to the shared Education and Outreach Coordinator.
- c. Work with the shared education and Outreach Coordinator to offer customized shoreline restoration workshops as part of an effort to enhance outreach to lake associations.
- d. Complete and implement a Joint Chloride Management Plan for the watershed with Shingle Creek, West Mississippi, and Elm Creek WMCs.
- e. Complete the migration and update of the Commission's and WMWA's websites.
- f. Develop a format and process for incorporating documentation of potential impacts to and outreach to underrepresented populations to increase engagement and help improve equitable outcomes.

**Goal 4. Anticipate and proactively work to withstand adverse impacts from changing environmental and climate conditions.**

- a. Consider applying for an MPCA Community Resilience grant, if available, in 2026 to model future precipitation scenarios in the watershed.

**Continue ongoing administration and programming.**

- a. Conduct routine Commission lake water quality monitoring and aquatic vegetation monitoring on Lake Magda and Ryan Lake, and project-associated monitoring on Eagle and Pike Lakes.
- b. Conduct Commission routine flow and water quality monitoring on Shingle and Bass Creeks at established monitoring sites.
- c. If available in 2026 sponsor volunteer stream monitoring through Hennepin County Watershed Connections.
- d. Sponsor volunteer lake monitoring through Metropolitan Council's Community Assisted Monitoring Program (CAMP) on up to four lakes.
- e. Prepare an annual water quality report.
- f. Solicit cost-share projects from member cities funded from the Cost Share Fund and the annual \$100,000 levy and the Partnership Cost Share Fund and the annual \$50,000 levy.
- g. Review feasibility studies for 2026 proposed capital projects, undertake Plan Amendments, hold public hearings, order projects, and certify levies.

- i. Prepare a 2027 annual budget.
- j. Invite three guest speakers to make lunchtime water resources presentations.

<b>2026 PROJECTED WORKPLAN</b>	<b>Jan</b>	<b>Feb</b>	<b>Mar</b>	<b>Apr</b>	<b>May</b>	<b>Jun</b>	<b>Jul</b>	<b>Aug</b>	<b>Sep</b>	<b>Oct</b>	<b>Nov</b>	<b>Dec</b>
<i>ROUTINE BUSINESS</i>												
Set annual workplan												
Set annual monitoring program												
Call for CIP/plan amendment proposals												
TAC considers CIP/ amendments and refers to Commission												
Call for public meeting on any proposed plan amendments												
Annual water quality report												
Lake monitoring												
Stream monitoring												
Adopt any plan amendments and set max levy												
Plan amendments and maximum levies to County												
Initial annual budget review for following year												
Finalize budget and send to cities												
Clean Water Fund grant applications												
Call for public hearing on proposed capital projects												
Public hearing on proposed capital projects												
Annual progress review, education, and outreach report												
Project reviews												
<i>PROJECTS &amp; MISC.</i>												
Lake herbicide treatments for AIS (Bass, Twin, Meadow)												
Crystal and Twin Lakes Carp Management (WBIF)												
Shingle Creek Brookdale Park Natural Channel Phase 1												
Minneapolis Shingle Creek Regional Park												
Eagle Lake Management Plan												
Lake Magda Subwatershed Assessment												
Provide customized shoreline restoration workshops												
Draft and adopt criteria for evaluating Commission projects for equity impact												
Draft and adopt Joint Chloride Management Plan												



**To:** West Mississippi WMC TAC & Commissioners

**From:** Eric Osterdyk, PE, CFM  
Grace Neumiller

**Date:** January 8, 2026

**Subject:** Final 2026 Work Plan

The following are approved activities for the 2026 West Mississippi Watershed Management Commission Work Plan, organized by Goal Areas identified in the Fourth Generation Plan as well as some general, routine Commission business. These activities were approved at the January 2026 Commission meeting. Note that we will bring a proposed 2026 Monitoring Plan to the Commission in February, which will provide additional details. Activities in calendar form are attached.

**Goal 1. Protect, maintain, and improve the water quality and ecological integrity of the water and natural resources within the watersheds and the downstream receiving waters.**

- a. Continue to identify, pursue grant funding for, and implement projects and programs addressing the bacterial impairment in the Mississippi River.
- b. Stay abreast of other regional and state TMDLs.
- c. Identify boundaries of the untreated areas directly connected to the Mississippi River or other conveyances.
- d. Partner with the MWMO to undertake monitoring at the 65<sup>th</sup> Avenue outfall.
- e. Continue to work with Brooklyn Park and Hennepin County to prepare a follow-up to the Mississippi River stabilization study.
- f. Complete the TH 252 subwatershed assessments for the Evergreen/70<sup>th</sup> Ave and Meadowood areas.
- g. Continue working with the City of Minneapolis in planning for the Minneapolis Shingle Creek Regional Park project.

**Goal 2. Reduce stormwater runoff rates and volumes to limit flood risk, protect conveyance systems, protect surficial groundwater, and reduce or mitigate impacts that have already occurred.**

- a. Complete reviews of development and redevelopment projects as necessary.

**Goal 3. Educate and engage all stakeholders in the watersheds on surface water issues and opportunities.**

- a. Participate in the West Metro Water Alliance joint education and outreach group.

- b. Partner with Hennepin County and other local watersheds to fund and provide guidance to a shared Education and Outreach Coordinator.
- c. Complete and implement a Joint Chloride Management Plan for the watershed with Shingle Creek, West Mississippi, and Elm Creek WMCs.
- d. Complete the migration and update of the Commission's and WMWA's websites.
- e. Develop a format and process for incorporating documentation of potential impacts to and outreach to underrepresented populations to increase engagement and help improve equitable outcomes.

**Goal 4. Anticipate and proactively work to withstand adverse impacts from changing environmental and climate conditions.**

- a. Consider applying for an MPCA Community Resilience grant in 2026, if available, to model future precipitation scenarios in the watershed.

**Continue ongoing administration and programming.**

- a. Conduct Commission routine flow and water quality monitoring at the Environmental Preserve site.
- b. If available in 2026, sponsor volunteer stream monitoring through Hennepin County's Watershed Connections (formerly RiverWatch).
- b. Prepare an annual water quality report.
- c. Solicit cost-share projects from member cities funded from the Cost Share Fund and the annual \$50,000 levy.
- d. Review feasibility studies for 2026 proposed capital projects, undertake Plan Amendments, hold public hearings, order projects and certify levies.
- e. Prepare a 2027 annual budget.
- f. Invite three guest speakers to make lunchtime water resources presentations.

2026 PROJECTED WORKPLAN	Jan	Feb	Mar	Apr	May	Jun	Jul	Aug	Sep	Oct	Nov	Dec
<i>ROUTINE BUSINESS</i>												
Set annual workplan	█											
Set annual monitoring program		█										
Call for CIP/plan amendment proposals	█	█										
TAC considers CIP/ amendments and refers to Commission			█	█								
Call for public meeting on any proposed plan amendments				█								
Annual water quality report				█								
Stream monitoring	█	█	█	█	█	█	█	█	█	█	█	█
Adopt any plan amendments and set max levy					█							
Plan amendments and maximum levies to County					█							
Initial annual budget review for following year					█							
Finalize budget and send to cities						█						
Clean Water Fund grant applications							█	█				
Call for public hearing on proposed capital projects								█				
Public hearing on proposed capital projects									█			
Annual progress review, education, and outreach report												█
Project reviews	█	█	█	█	█	█	█	█	█	█	█	█
<i>PROJECTS</i>												
Mississippi Riverbank Stabilization Feasibility Study Wrap-Up	█											
Minneapolis Shingle Creek Regional Park Planning				█	█	█	█	█	█	█		
Continuous flow monitoring of 65 <sup>th</sup> Ave Outfall through MWMO	█	█	█	█	█	█	█	█	█	█	█	█
Draft and adopt criteria for evaluating Commission projects for equity impact analysis	█	█	█	█	█	█	█	█	█	█	█	█
Draft and adopt Joint Chloride Management Plan	█	█	█	█	█	█	█	█	█	█	█	█

**To:** Shingle Creek WMO Commissioners and TAC

**From:** Eric Osterdyk, P.E.  
Grace Neumiller

**Date:** February 4, 2026

**Subject:** 2026 Shingle Creek Monitoring Plan

**Recommended  
Commission Action**

Review and approve the 2026 monitoring plan.

Each year the Commission budgets and undertakes monitoring activities, including routine stream and lake monitoring and volunteer lake, stream, and wetland monitoring. Water quality and quantity monitoring on Shingle Creek and select lakes is routinely performed by Stantec staff and the USGS. Outfall monitoring will be performed by Stantec staff at the 38<sup>th</sup> Avenue Outfall to Crystal Lake as well as other monitoring as part of special studies. Lake monitoring is also performed by volunteers through the Met Council’s Citizen Assisted Lake Monitoring Program (CAMP).

The purpose of this memo is to present the proposed 2026 monitoring program. This proposal is consistent with the adopted Fourth Generation Management Plan, which includes routine monitoring tasks, specific monitoring efforts to support Commission-administered grants or special studies, and monitoring to evaluate progress toward the TMDLs. **Table 1** below shows the TMDL review schedule for Shingle Creek. Last year, the Commission completed the 5-year biotic and DO TMDL review report for Shingle and Bass Creeks. Under the Fourth Generation Plan, TMDL’s will be reviewed systematically by priority. Lakes have been prioritized by tiers that can be seen in **Table 3**. Tiers are as follows:

1. Tier 1: Impaired lakes with management actions planned. These lakes are priority lakes for intensive monitoring under the Fourth Generation Plan. Intensive monitoring will be used to evaluate lakes for management projects.
2. Tier 2: Impaired lakes with previous management or no management planned. The lakes are second priority for intensive lake monitoring under this Plan, as they are impaired.
3. Tier 3: Delisted lakes. These lakes are third priority and will be monitored primarily through the CAMP program unless water quality deteriorates.

**Table 1. Shingle Creek watershed TMDL approvals and review dates.**

TMDL	TMDL EPA Approval	Implementation Plan Approval	Third Generation Plan 5-Year Progress Review	Follow-Up Special Studies/ Management Plans
Shingle Creek Chloride	February 14, 2007	March 5, 2007	2014	
Twin and Ryan Nutrients	November 9, 2007	November 13, 2007	2014	2025-2026 (Twin)
Crystal Nutrients	March 25, 2009	July 7, 2009	2016	2021-2024
Pomerleau, Bass, and Schmidt Nutrients	September 25, 2009	December 3, 2009	2017	2019-2020 (Bass and Pom)
Meadow Nutrients	March 23, 2010	June 14, 2010	2019	2022-2025
Cedar Island, Pike, and Eagle Nutrients	April 14, 2010	May 18, 2010	2018	2024-2026 (Eagle and Pike)
Magda Nutrients	September 30, 2010	October 1, 2010	2019	
Shingle and Bass Creeks Biotic and DO	November 4, 2011	January 30, 2012	2025	

**2026 PROPOSED MONITORING PROGRAM**

The information set forth below explains the various monitoring programs, their purpose, and the proposed costs and funding. **Table 2** includes a summary of the budgets for each monitoring activity. Volunteer stream monitoring through the Watershed Connections program was not budgeted for 2026.

**Table 2. 2026 proposed monitoring program budget and cost.**

Activity	Funding Source	2026 Budget
Stream Monitoring	Commission Monitoring Program	\$40,410
Lake Monitoring	Commission Monitoring Program	\$41,000
CAMP Lake Monitoring	Commission Monitoring Program	\$5,000

**ROUTINE STREAM MONITORING**

Routine Stream Flow and Water Quality Monitoring. The Commission has routinely monitored stream flow and water quality in Shingle Creek since 1996. Two locations, one downstream of Humboldt Avenue in Minneapolis (“SC-0,” see attached **Figure 1** for all monitoring locations) and one upstream of Zane Avenue in Brooklyn Park (“SC-2”) have been monitored for water quantity and various water quality parameters. In 2007, the monitoring location upstream of Zane Avenue was moved to just downstream of Brooklyn Boulevard to obtain a better stage-discharge relationship. This site is identified as SC-3. In 2015, Bass Creek (“BCP” on Figure 1) was added as a third site to be routinely monitored for water quality and conductivity. The Bass Creek monitoring station has helped provide better information about water quality in Bass Creek, which is impaired for chloride and biota.

In 2024, several safety incidents occurred during routine water quality monitoring at SC-0, including a field robbery and an armed suspect threatening the safety of field staff. Following that, in 2025 SC-0 was moved across the stream into Webber Park to both improve safety and maintain the stage-discharge relationship already established at the site. Unfortunately, during the 2025 monitoring season, the equipment was stolen. The replacement equipment was ordered in early 2026, and SC-0 will be reinstalled with greater reinforcements to prevent further incidents of theft.

A fourth site at Queen Avenue in Minneapolis (“SC-1/USGS”) is monitored for flow by the US Geological Survey (USGS) as a part of its ongoing National Assessment of Water Quality (NAWQA). Chemical parameters are no longer routinely measured at the USGS site, except for continuous conductivity and temperature. These data are available online real-time at the following [link](#). The Commission partners financially with the USGS for the operation of the Queen Avenue monitoring station.

The 2026 budget for routine stream monitoring is \$40,410. The budget includes labor and expenses for the following at sites SC-0 (or alternative), SC-3, and BCP flow and water quality monitoring:

- Equipment installation at beginning of season and decommission at end of season
- Routine summer sampling approximately twice per month from April – October, including field measurements of flow, pH, dissolved oxygen, temperature, and conductivity.
- Routine winter chloride sampling approximately once per month from November – March, including field measurements of flow, pH, dissolved oxygen, temperature, and conductivity. USGS site is also monitored during this time.
- Storm sampling targeting approximately one composite sample per month from April – October using ISCO sampling.
- Data entry and rating curve updates.
- Laboratory analysis of water quality parameters, including total phosphorus (TP), ortho-phosphorus (ortho-P), total suspended solids (TSS), *E. coli*, and chloride.

Note that staff expect that some monitoring equipment (ISCO stream level loggers) may require replacement this year. If so, staff will provide the Commission with cost estimates for the equipment before purchasing.

## LAKE MONITORING

Intensive Lake TMDL Monitoring. To track the effectiveness of BMP implementation in improving lake water quality, the Commission routinely performs intensive lake monitoring to supplement volunteer surface monitoring. Because the Commission’s goals include achieving delisting of lakes that meet their TMDLs and water quality, the Fourth-Generation monitoring plan continues more rigorous lake monitoring sufficient to demonstrate to the MPCA and EPA that conditions have improved. Attachment 1 shows the lake monitoring schedule from the Fourth Generation Plan, updated to reflect the actual monitoring completed.

The 2026 Lake Monitoring budget is \$41,000. The Twin Lakes chain will be monitored ahead of internal load management. The budget includes labor and expenses for the activities described below.

Water Quality: For 2026, Lake Magda and Ryan Lake will be monitored biweekly from May through October. The water quality data collected for the lakes will include surface and deep-water samples analyzed for phosphorus, chlorophyll-*a* content, suspended solids, and water column temperature/DO profiles. Ongoing Eagle and Pike Lake monitoring through the Eagle and Pike Management Plan will be completed via the Community Assisted Monitoring Program (CAMP).

Aquatic Vegetation Surveys: A component of the intensive monitoring is to obtain or update surveys of lake aquatic vegetation. As we have discussed with the Commission in the past, aquatic vegetation plays an important role in water quality and biotic integrity, and the vegetation community can change as water quality changes. For 2026, surveys for Lake Magda and Ryan Lake will be updated in tandem with intensive monitoring.

## **GRANT PROJECTS**

The following monitoring tasks are built into ongoing grant projects. While not funded from the Commission's general fund budget, they are presented here for completeness.

### **MONITORING & MANAGEMENT TO SUPPORT MEADOW LAKE DRAWDOWN PROJECT**

The Meadow Lake Drawdown project began in Fall 2021. The project included adaptive management to control the fathead minnow and CLP populations in the lake and address the nutrient impairment. Water quality and clarity in the lake have improved markedly; however, CLP grew at nuisance levels in 2024 and 2025. The Clean Water Fund grant to fund this project has expired, but there are leftover levy funds that will cover additional monitoring and management in 2026. Additionally, staff applied for 2026 MN DNR Invasive Aquatic Plant Management Grants to support herbicide treatments in Meadow Lake. Staff will be informed if the Commission received the grant in late February 2026.

The fifth summer season of this project will include a spring CLP delineation and potential treatment with herbicide. If deemed necessary by MnDNR AIS treatment permitting, two vegetation surveys and water quality sampling will also occur. Staff do not have an estimate for this CLP treatment at this time but will bring any subcontractor expenses to the Commission for approval.

### **38TH AVENUE OUTFALL**

The Commission had previously approved monitoring water quality in the storm sewer that collects runoff from a large area in Minneapolis and discharges into Crystal Lake in Robbinsdale. The in-manhole equipment will be installed this spring, and monitoring will be underway throughout the year. This is part of the overall Crystal Lake Management Plan.

**VOLUNTEER MONITORING**

**Volunteer Lake Monitoring.** The Shingle Creek Commission has participated in the Met Council’s “Citizen Assisted Lake Monitoring Program” (CAMP) since 1993. This program trains volunteers to take surface water samples and make water quality observations from late spring to early fall, using standardized reporting techniques and forms. The CAMP program has been an important means of obtaining ongoing lake water quality data. This program is also an NPDES Education and Outreach BMP.

CAMP was initiated by the Met Council to supplement the water quality monitoring performed by Met Council staff and to increase our knowledge of water quality of area lakes. Volunteers in the program monitor the lakes every other week from mid-April to mid-October. They measure surface water temperature and Secchi depth, and collect surface water samples that are analyzed by the Met Council for total phosphorous, total Kjeldahl nitrogen, and chlorophyll-*a*. The volunteers also judge the appearance of the lake, its odor, and its suitability for recreation.

The Met Council charges \$760 per lake to cover the cost of supplies for volunteers, analysis of samples, and Regional Reports. The Commission owns four equipment kits purchased in past years and will not have to purchase any more kits unless key equipment needs to be replaced.

Lakes are monitored on a rotating schedule, filling in around routine Commission and City monitoring schedules. It is assumed that when a lake undergoes the routine Commission sampling program, no CAMP monitoring will be performed that year. Lakes scheduled for 2026 volunteer lake monitoring are Cedar Island Lake, Eagle Lake, and Pike Lake. The 2026 budget is \$5,000 and includes Met Council fees and Stantec coordination.

**Volunteer Stream Monitoring.** In previous years, high school student volunteers conducted macroinvertebrate monitoring through Hennepin County Environmental Services’ Watershed Connections (formerly RiverWatch) Program at two locations on Shingle Creek. The Commission used to contract with Hennepin County for this service; however, the program was discontinued following the pandemic, and County staff are still working on reorganizing and restarting this program in a new format.

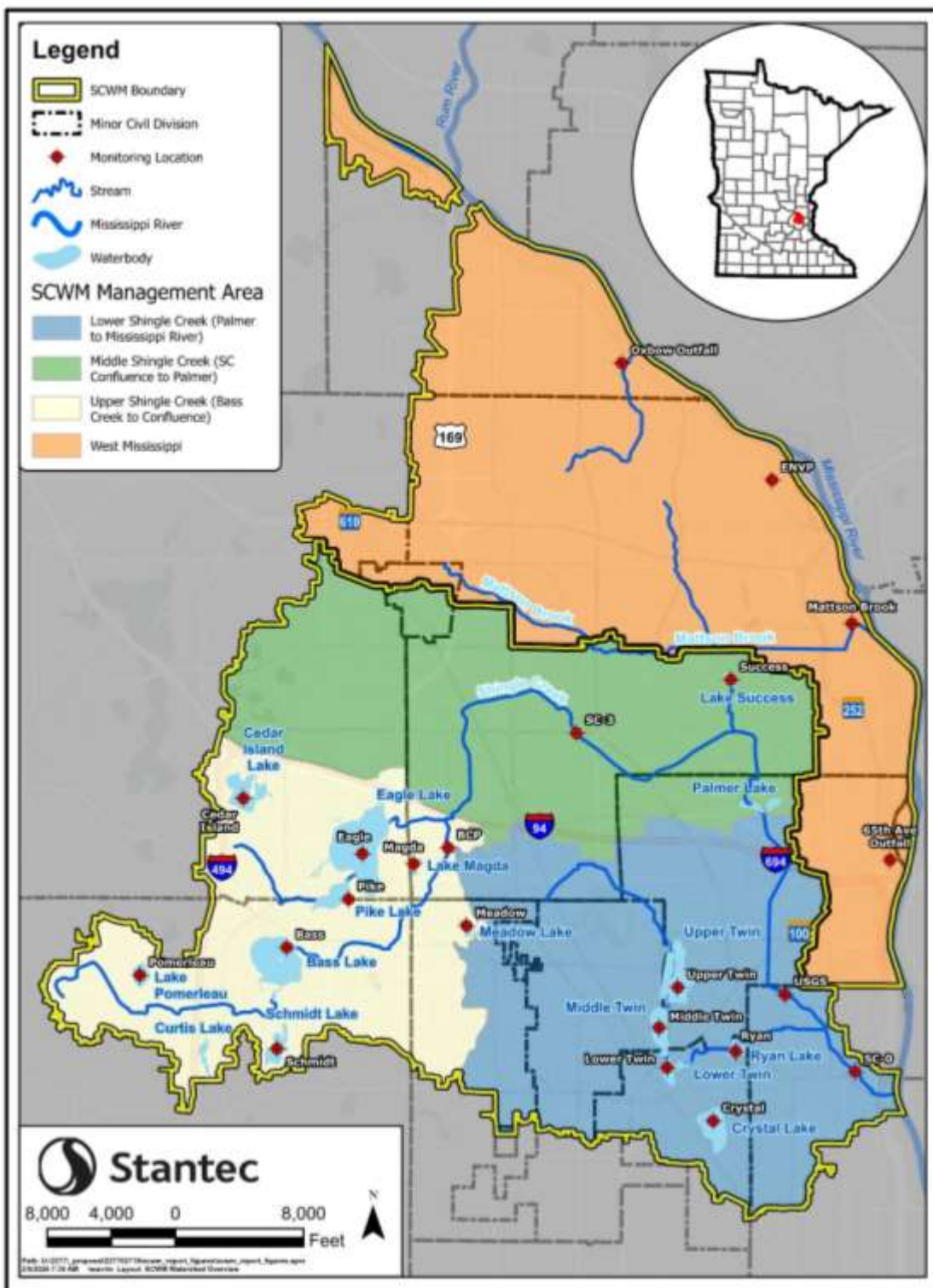


Figure 1. Shingle Creek and West Mississippi watershed monitoring locations. Watershed boundaries have been updated with the new 2025 legal boundary.



# Memo

## Attachment 1: Lake Monitoring Schedule

Table 3. Draft lake monitoring schedule for Shingle Creek lakes 2023-2032.

Lake	Water Quality Monitoring										
	23	24	25	26	27	28	29	30	31	32	
<i>Tier 1 Lakes – Impaired with management actions planned</i>											
Cedar Island	Ci	C, Ci	Ci	C, Ci	Ci	X, Ci	Ci	C, Ci	Ci	Ci	
Eagle	Ci	X, Ci	Ci	C, Ci	Ci	X, Ci	Ci	C, Ci	Ci	Ci	
Pike	Ci	X, Ci	Ci	C, Ci	Ci	C, Ci	Ci	C, Ci	Ci	Ci	
Upper Twin	X		X		C		X		C		
Middle Twin	X		X		C		X		C		
<i>Tier 2 Lakes – Impaired lakes with previous management or none planned</i>											
Crystal Lake	Ci				X				X	C	
Meadow Lake	C				X					X	
Lake Success			C			C				C	
Lake Magda				X					X	C	
<i>Tier 3 Lakes – Delisted lakes</i>											
Bass Lake	Ci	C	Ci				C	X			
Pomerleau Lake	Ci	C	Ci				C	X			
Schmidt Lake	Ci, C	Ci	C			C				X	
Lower Twin Lake	C		C		C		C		C		
Ryan Lake	C			X				C			

<sup>1</sup>X denotes Commission monitoring, C denotes CAMP monitoring, and Ci denotes City monitoring. Colored letters indicate departures from scheduled.

**To:** West Mississippi WMO Commissioners and TAC  
**From:** Eric Osterdyk, P.E.  
Grace Neumiller  
**Date:** February 4, 2026  
**Subject:** 2026 West Mississippi Monitoring Plan

**Recommended  
Commission Action**

Review and approve the 2026 monitoring plan.

The West Mississippi Watershed Management Commission for many years did not routinely monitor water quality in the few streams that are present in the watershed. The Commission undertook stream and outfall monitoring in 1990-1992 and found that the water quality of runoff from the watershed was generally within ecoregion norms. Since much of the watershed was poised to develop under Commission rules regulating the quality and rate of runoff, the Commission elected to discontinue further monitoring. In 2010 and 2011, the Commission authorized a repeat of the 1990-1992 monitoring to determine current conditions and evaluate whether the development rules were protective of downstream water quality.

The Third Generation Plan and subsequent budgets incorporated ongoing, routine monitoring for West Mississippi that includes monitoring flow and water quality at two sites per year on a rotating basis. The Commission has elected to continue that monitoring under the Fourth Generation Plan. In 2025, the Commission monitored Mattson Brook (**Figure 1**). Results from 2025 monitoring will be presented in the Annual Water Quality Report in April 2026.

**Routine Monitoring.** Figure 1 shows monitoring sites within Shingle Creek and West Mississippi. The Environmental Preserve (ENVP) outlet and site and 65<sup>th</sup> Avenue stormwater pipe will be monitored in 2026 for flow and water quality using automatic samplers. Continuous flow will be monitored using pressure transducers, and water quality will be analyzed through field parameter measurements, periodic grab samples, and storm composite sampling using ISCO automated samplers purchased by the Commission in 2010.

Due to continued difficulties accessing the 65th Avenue outfall in the past, West Mississippi WMC has partnered with the Mississippi Watershed Management Organization (MWMO) to perform the monitoring in 2020-2026. MWMO has experience and equipment for performing stream monitoring in confined spaces like stormwater pipes and can perform the monitoring safely and efficiently. Results from MWMO’s monitoring have been satisfactory, and the partnership will be continued in 2026. The

Professional Services Agreement and Scope of Services from MWMO for 65<sup>th</sup> Avenue stormwater pipe monitoring will be included in the February Treasurer's Report.

The 2026 budget for routine monitoring is \$21,100. The budget includes labor and expenses for the following:

- Contract with MWMO for 65<sup>th</sup> Ave flow and water quality monitoring (\$12,500).
- ENVP flow and water quality monitoring (\$8,600)
  - o Equipment installation at beginning of season and decommission at end of season
  - o Routine sampling approximately once per month from April – October, including field measurements of flow, pH, dissolved oxygen, temperature, and conductivity.
  - o Storm sampling targeting approximately one composite sample per month from April – October using ISCO sampling
  - o Data entry and rating curve updates
  - o Laboratory analysis of water quality parameters, including total phosphorus (TP), ortho-phosphorus (ortho-P), total suspended solids (TSS), *E. coli*, and chloride.

Note that staff expect some monitoring equipment (ISCO stream level loggers) to require replacement this year and will provide the Commission with cost estimates for the equipment before purchasing.

**Volunteer Stream Monitoring.** In previous years, high school student volunteers conducted macroinvertebrate monitoring through Hennepin County Environmental Services' Watershed Connections (formerly RiverWatch) Program at one location in West Mississippi – Mattson Brook (see **Figure 1** for location). The Commission used to contract with Hennepin County for this service; however, the program was discontinued following the pandemic, and County staff are still working on reorganizing and restarting this program in a new format.

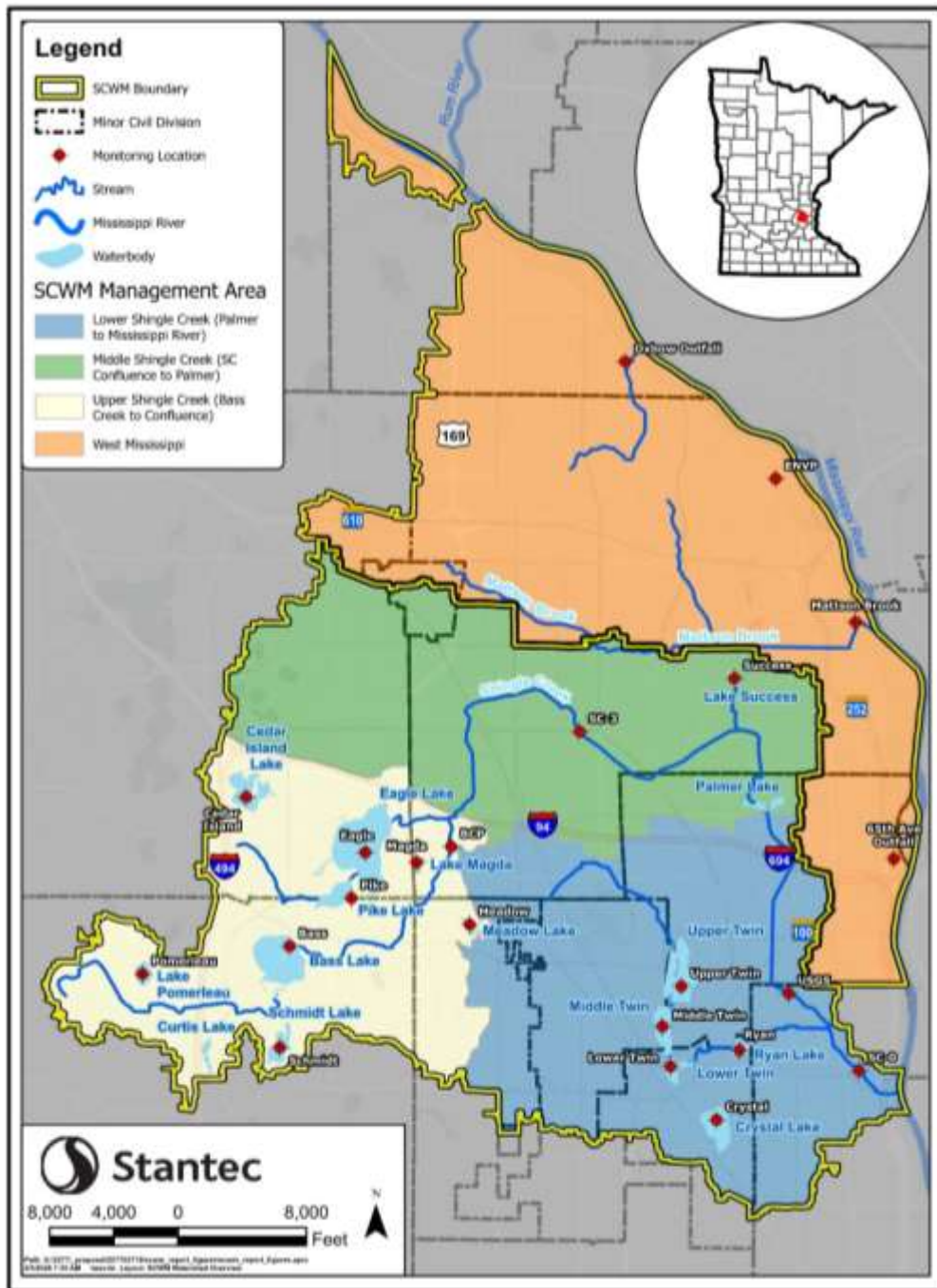


Figure 1. Shingle Creek and West Mississippi watershed monitoring locations. Watershed boundaries have been updated with the new 2025 legal boundary.

**From:** Grace Barcelow <Grace.Barcelow@hennepin.us>  
**Sent:** Monday, February 2, 2026 11:39 AM  
**Subject:** West Metro Water Alliance (WMWA) February Update  
Dear West Metro Water Alliance partners,

We continue to make steady progress on WMWA projects and to advance our shared education and outreach efforts. Below is an update on current initiatives, next steps, and recent activity.

**Chloride Reduction Campaign.** Outreach has begun to the facilities already recommended by partners. Because capacity is limited this year, watershed and/or city staff recommendations are essential for ensuring consultations occur in the areas where they are most needed. If you still have no submitted suggestions, please consider doing so. Your support in identifying priority sites is greatly appreciated and helps ensure we can offer this service where it will have the most impact.

For those who have submitted recommendations, I have begun outreach and started to set up consultations for this month.

**Communications Work.** The February [media kit](#) was shared with partners this morning. This media kit highlights the chloride consultations that WMWA is offering and encourages residents to follow best winter maintenance practices.

**Youth Stormwater Education Work.** No major updates at this time. Classrooms will begin Watershed Connections programming this spring.

**Parkers Lake Chloride Reduction Project.** We continue working with Bolton & Menk to implement recommended practices at four target properties. Consultations have been completed at all facilities in the northern subwatershed with onsite salt storage. This winter, our focus will be to implement site and equipment upgrades and host Smart Salting trainings.

**Eagle Lake and Fish Lake Shoreline/Yard Restoration Projects.** No major updates. Metro Blooms and Blue Thumb have completed and distributed restoration designs to participating residents. Letters of intent have been shared, and I continue to encourage implementation. For residents who attended last year's workshops, stipend contracts are being sent out, with one already fully signed.

For a larger project identified on Fish Lake, ECWMC is interested in partial funding. We are working with the property owner, watershed staff, and Hennepin County to finalize cost share agreements and plan for spring 2026 implementation.

**RBWMO and BCWMC Multifamily Housing Project Planning (2026–2027).** We have met with RBWMO and BCWMC staff to discuss potential project sites and engagement strategies for 2026. Watershed staff, city staff, and I will work this month to continue planning.

Lastly, in January I attended the BCWMC meeting to present to commissioners and review WMWA's work over the last year. Next week, I will attend the ECWMC meeting to do the same.

Please let me know if you have any questions or comments. I look forward to connecting at the WMWA meeting next week!

Thank you,

Grace Barcelow  
**Hennepin County** Environment and Energy  
Conservation Specialist  
612-910-3914 (mobile)  
612-543-9295 (office)  
[grace.barcelow@hennepin.us](mailto:grace.barcelow@hennepin.us)

Pronouns: she/her

**Disclaimer:** If you are not the intended recipient of this message, please immediately notify the sender of the transmission error and then promptly permanently delete this message from your computer system.



**SHINGLE CREEK / WEST MISSISSIPPI WATERSHED MANAGEMENT COMMISSION  
MONTHLY COMMUNICATION LOG  
February 2026**

Date	From	To	SC	WM	Description
1/8/26	MPCA	Diane Spector, Katie Kemmitt	X	X	Attended Webinar: Minnesota Stormwater Manual Webinar Orientation to Low Salt Design Guidance
1/12/26	Chris Dahn (Bogart & Peterson)	Eric Osterdyk	X		Discussed permitting requirements for development at 8865 Zealand Ave. N in Brooklyn Park. Project includes building addition on the southwest side of the existing building. Development with disturbance under 5 acres would be reviewed by the City.
1/14/26	Jim Benshoof	Eric Osterdyk	X		Initial call about watershed cost share program. Robbinsdale Parkway United Church of Christ has a potential project that would convert parking lot to permeable paving.
1/21/26	Eric Osterdyk	Jim Benshoof	X		Provided additional direction to Jim (Robbinsdale Parkway United Church of Christ) on the watershed cost share program and how to apply.
1/22/26	Paul Strong & Matt Isakson (Bolton & Menk)	Eric Osterdyk	X		Preapplication meeting to review Robbinsdale Public Works facility. Site triggers stormwater management and erosion & sediment control but is under 5 acres and will be reviewed by the City.
1/27/26	Eric Osterdyk	John Gulliver (University of Minnesota)	X	X	Response to John Gulliver on willing to serve on the Technical Advisory Committee for the LCCMR project "Road Salt Pollution of Surface Waters from Groundwater".
1/27/26	Eric Osterdyk	Kris Guentzel (Hennepin County Environment and Energy)	X		Correspondence regarding potential for Commission Partnership Cost Share eligibility for upcoming updates to the Brookdale Service Center.
1/27/26	Eric Osterdyk	Touyia Lee (Brooklyn Center)	X		Correspondence regarding City Cost Share Program for upcoming Palmer Lake Flood Mitigation project.
1/27/26	Eric Osterdyk	Jesse Struve (Crystal)	X		Correspondence regarding City Cost Share Program for regenerative air sweeper.
1/29/26	Grace Neumiller, Diane Spector	Skol Marketing Staff	X	X	Meeting with Skol Marketing to discuss interactive web map design for new Commission website.
2/2/26	Grace Neumiller, Diane Spector	Amy Juntunen, Andrew Vistad (Hakanson Anderson)	X	X	Meeting with JASS and Pioneer-Sarah Creek Watershed District representative to discuss interactive web map development and follow-up needs for Skol.
2/2/26	Grace Neumiller	Angelique Dahlberg (MN DNR)	X	X	Communication with Angelique Dahlberg to check on the status of SC's MN DNR 2026 IAPM Grant applications. Recipients will be notified in late February, behind the initial notification schedule.
2/4/2026	Grace Neumiller	Emily Resseger (MWMO)		X	Request for MWMO to provide an updated 2026 Scope of Services and Professional Services Agreement for the 2026 monitoring of the 65 <sup>th</sup> Ave Outfall.

**To:** Shingle Creek/West Mississippi WMO Commissioners  
**From:** Eric Osterdyk, PE, CFM  
Grace Neumiller  
**Date:** February 5, 2026  
**Subject:** February 2026 Staff Report

**Recommended  
Commission Action**

For discussion and information.

**PROJECT UPDATES**

- Website Updates
  - Staff worked with Avallo and Skol Marketing for the WMWA and watershed website updates. In January, staff met with both firms to discuss new desired website features, logo updates, web design, and hosting platforms. Website development is underway for the WMWA, Shingle Creek/West Mississippi, Pioneer-Sarah Creek, and Elm Creek Watershed Commission websites.
- Winter Cl Monitoring
  - Staff have conducted routine monthly monitoring of 3 stream sites within the Shingle Creek watershed: Bass Creek Park, SC-3, and SC-0 to monitor winter chloride levels. Water quality sonde measurements, in addition to a Cl grab sample, have been collected.
- Joint Chloride Management Plan
  - Staff worked with SCWM TAC members to identify priority areas within the watersheds to target implementation actions, such as large parking lots, agricultural lands, or drainage areas of chloride impaired/threatened waterbodies. Please submit high priority Cl management areas in your region to [grace.neumiller@stantec.com](mailto:grace.neumiller@stantec.com).
- 38<sup>th</sup> Ave Outfall Monitoring
  - Staff worked with Tech Sales to order the equipment for the 38<sup>th</sup> Ave Outfall monitoring. Staff met in mid-January to discuss initial tasks for the project. Staff will contact the City of Robbinsdale with any needs to prepare for equipment installation in Spring 2026.

**GRANT, COST SHARE, AND FUND BALANCES UPDATE February 2026**

**Grant Projects**

Project	Grant Source	Expiration	Status
<i>Shingle Creek</i>			
Joint Chloride Mgmt Plan	BWSR AIG	12/31/27	GIS work, first stakeholder meeting completed
Lake Magda SWA	WBIF	12/31/27	Not yet begun
Chloride Implementation	WBIF	12/31/27	In progress, waiting for Mgmt. Plan input, reimbursed New Hope brine equipment Sept 2025
Crystal Lake Carp Mgmt	WBIF	12/31/27	Removals complete, awaiting final memo from WSB Engineering
<i>West Mississippi</i>			
Miss Riverbank Stabilization	WBIF	12/31/25	Complete, final report submitted to BWSR
Chloride Implementation	WBIF	12/31/27	In progress, waiting for Mgmt. Plan input,

**Cost Share Projects**

Project	Partner	Amount	Status
<i>Shingle Creek</i>			
Shingle Creek Rain Gardens	City-Mpls	\$50,000	In progress
FAIR School	FAIR School	\$10,000	In progress
<i>West Mississippi</i>			
Miss Gateway Shoreline Stabil	Partner-3 Rivers	\$75,000	In progress

**Encumbered Balances as of 12/31/2025, including levy funds expected 2025. Excludes year end adjustments.**

Watershed	City Cost Share	Partnership	Closed Projects	Assigned	Unrestricted
Shingle Creek	\$501,915	\$201,971	\$251,045	\$60,813	\$297,133
West Mississippi	\$565,748	\$290,728	\$129,806	\$129,920**	\$191,834

\*\*About \$89,000 assigned to "Grant Match account"